

A19003

Leader in Biomolecular Solutions for Life Science



C-Reactive Protein (CRP) Rabbit mAb

Catalog No.: A19003

Recombinant

2 Publications

Basic Information

Observed MW

25kDa

Calculated MW

23kDa

Category

SMab Recombinant Monoclonal
Antibody

Applications

WB,IHC-P,ELISA

Cross-Reactivity

Human,Mouse

CloneNo number

ARC0341

Background

The protein encoded by this gene belongs to the pentraxin family which also includes serum amyloid P component protein and pentraxin 3. Pentraxins are involved in complement activation and amplification via communication with complement initiation pattern recognition molecules, but also complement regulation via recruitment of complement regulators. The encoded protein has a calcium dependent ligand binding domain with a distinctive flattened beta-jellyroll structure. It exists in two forms as either a pentamer in circulation or as a nonsoluble monomer in tissues. It is involved in several host defense related functions based on its ability to recognize foreign pathogens and damaged cells of the host and to initiate their elimination by interacting with humoral and cellular effector systems in the blood. Consequently, the level of this protein in plasma increases greatly during acute phase response to tissue injury, infection, or other inflammatory stimuli. Elevated expression of the encoded protein is associated with severe acute respiratory syndrome coronavirus 2 (SARS‐CoV‐2) infection.

Recommended Dilutions

WB 1:1000 - 1:2000

IHC-P 1:200 - 1:800

ELISA Recommended starting concentration is 1 µg/mL. Please optimize the concentration based on your specific assay requirements.

Immunogen Information

Gene ID

1401

Swiss Prot

P02741

Immunogen

A synthetic peptide corresponding to a sequence within amino acids 125-224 of human C-Reactive Protein (CRP) (P02741).

Synonyms

PTX1; C-Reactive Protein (CRP)

Contact

 www.abclonal.com

Product Information

Source

Rabbit

Isotype

IgG

Purification

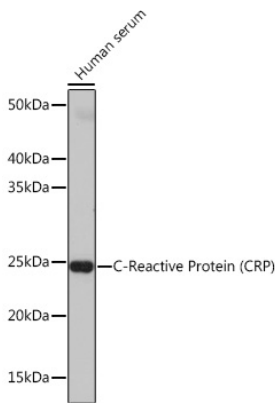
Affinity purification

Storage

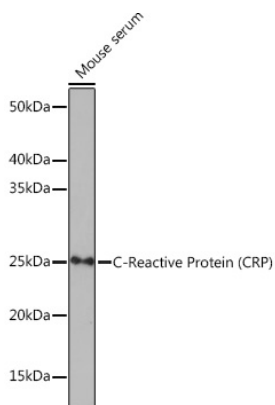
Store at -20°C. Avoid freeze / thaw cycles.

Buffer: PBS with 0.02% sodium azide,0.05% BSA,50% glycerol,pH7.3.

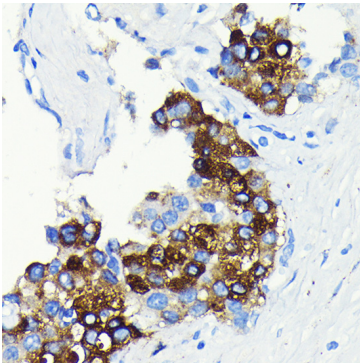
Validation Data



Western blot analysis of lysates from Human serum, using C-Reactive Protein (CRP) Rabbit mAb (A19003) at 1:1000 dilution.
Secondary antibody: HRP-conjugated Goat anti-Rabbit IgG (H+L) (AS014) at 1:10000 dilution.
Lysates/proteins: 25µg per lane.
Blocking buffer: 3% nonfat dry milk in TBST.
Detection: ECL Basic Kit (RM00020).
Exposure time: 5s.



Western blot analysis of lysates from Mouse serum, using C-Reactive Protein (CRP) Rabbit mAb (A19003) at 1:1000 dilution.
Secondary antibody: HRP-conjugated Goat anti-Rabbit IgG (H+L) (AS014) at 1:10000 dilution.
Lysates/proteins: 25µg per lane.
Blocking buffer: 3% nonfat dry milk in TBST.
Detection: ECL Enhanced Kit (RM00021).
Exposure time: 3min.



Immunohistochemistry analysis of paraffin-embedded Human liver cancer using C-Reactive Protein (C-Reactive Protein (CRP)) Rabbit mAb (A19003) at dilution of 1:100 (40x lens). Microwave antigen retrieval performed with 0.01M PBS Buffer (pH 7.2) prior to IHC staining.