

A19004

Leader in Biomolecular Solutions for Life Science



[KO Validated] α -Catenin Rabbit mAb

Catalog No.: A19004

KO Validated

Recombinant

2 Publications

Basic Information

Observed MW

100kDa

Calculated MW

100kDa

Category

SMab Recombinant Monoclonal
Antibody

Applications

WB,ELISA

Cross-Reactivity

Human,Mouse,Rat

CloneNo number

ARC0348

Background

This gene encodes a member of the catenin family of proteins that play an important role in cell adhesion process by connecting cadherins located on the plasma membrane to the actin filaments inside the cell. The encoded mechanosensing protein contains three vinculin homology domains and undergoes conformational changes in response to cytoskeletal tension, resulting in the reconfiguration of cadherin-actin filament connections. Certain mutations in this gene cause butterfly-shaped pigment dystrophy.

Recommended Dilutions

WB 1:500 - 1:1000

Immunogen Information

Gene ID

1495

Swiss Prot

P35221

Immunogen

A synthetic peptide corresponding to a sequence within amino acids 1-100 of human α -Catenin (P35221).

Synonyms

MDBS2; MDPT2; CAP102; in

Contact



www.abclonal.com

Product Information

Source

Rabbit

Isotype

IgG

Purification

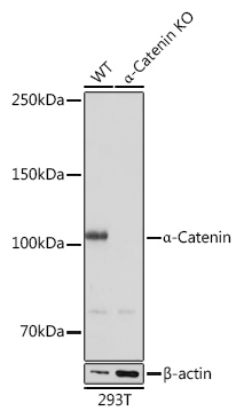
Affinity purification

Storage

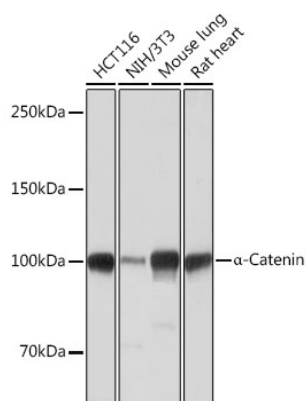
Store at -20°C. Avoid freeze / thaw cycles.

Buffer: PBS with 0.02% sodium azide,0.05% BSA,50% glycerol,pH7.3.

Validation Data



Western blot analysis of extracts from wild type (WT) and α -Catenin knockout (KO) 293T cells, using α -Catenin antibody (A19004) at 1:1000 dilution.
Secondary antibody: HRP Goat Anti-Rabbit IgG (H+L) (AS014) at 1:10000 dilution.
Lysates/proteins: 25 μ g per lane.
Blocking buffer: 3% nonfat dry milk in TBST.
Detection: ECL Basic Kit (RM00020).
Exposure time: 1s.



Western blot analysis of extracts of various cell lines, using α -Catenin antibody (A19004) at 1:1000 dilution.
Secondary antibody: HRP Goat Anti-Rabbit IgG (H+L) (AS014) at 1:10000 dilution.
Lysates/proteins: 25 μ g per lane.
Blocking buffer: 3% nonfat dry milk in TBST.
Detection: ECL Basic Kit (RM00020).
Exposure time: 1s.