

A19015

Leader in Biomolecular Solutions for Life Science



CD34 Rabbit mAb

Catalog No.: A19015

Recombinant

9 Publications

Basic Information

Observed MW

120kDa

Calculated MW

41kDa

Category

SMab Recombinant Monoclonal
Antibody

Applications

WB,IHC-P,ELISA

Cross-Reactivity

Human,Mouse,Rat

CloneNo number

ARC0219

Background

The protein encoded by this gene may play a role in the attachment of stem cells to the bone marrow extracellular matrix or to stromal cells. This single-pass membrane protein is highly glycosylated and phosphorylated by protein kinase C. Two transcript variants encoding different isoforms have been found for this gene.

Recommended Dilutions

WB 1:500 - 1:1000

IHC-P 1:100 - 1:400

ELISA Recommended starting concentration is 1 µg/mL. Please optimize the concentration based on your specific assay requirements.

Immunogen Information

Gene ID

947

Swiss Prot

P28906

Immunogen

Synthetic peptide. This information is considered to be commercially sensitive.

Synonyms

CD34; CD34 molecule; GIG3; MORT1

Contact



www.abclonal.com

Product Information

Source

Rabbit

Isotype

IgG

Purification

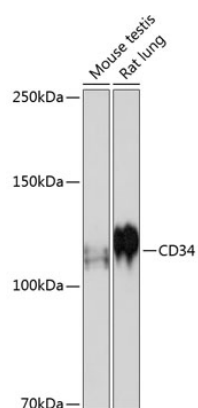
Affinity purification

Storage

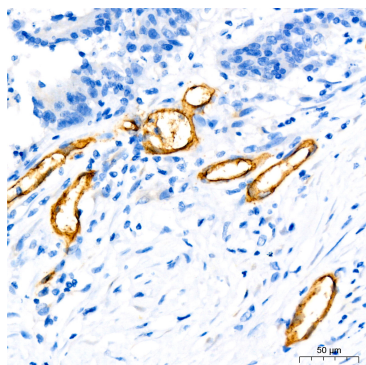
Store at -20°C. Avoid freeze / thaw cycles.

Buffer: PBS with 0.02% sodium azide,0.05% BSA,50% glycerol,pH7.3.

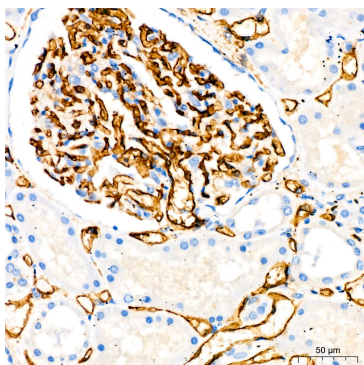
Validation Data



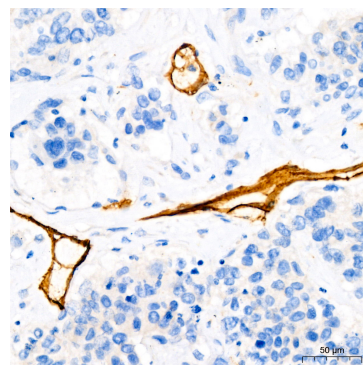
Western blot analysis of various lysates using CD34 Rabbit mAb (A19015) at 1:500 dilution.
 Secondary antibody: HRP-conjugated Goat anti-Rabbit IgG (H+L) (AS014) at 1:10000 dilution.
 Lysates/proteins: 25µg per lane.
 Blocking buffer: 3% nonfat dry milk in TBST.
 Detection: ECL Basic Kit (RM00020).
 Exposure time: 3min.



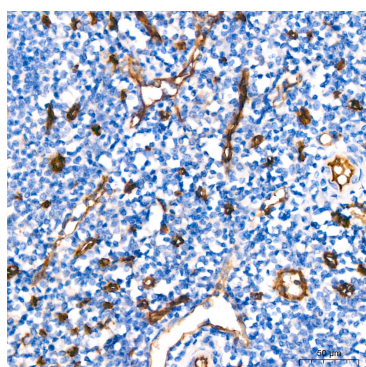
Immunohistochemistry analysis of paraffin-embedded Human colon carcinoma using CD34 Rabbit mAb (A19015) at dilution of 1:100 (40x lens). Microwave antigen retrieval performed with 0.01M Tris/EDTA Buffer (pH 9.0) prior to IHC staining.



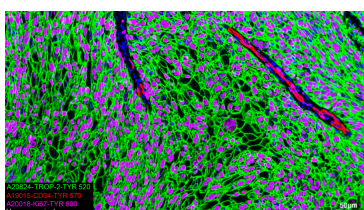
Immunohistochemistry analysis of paraffin-embedded Human kidney using CD34 Rabbit mAb (A19015) at dilution of 1:100 (40x lens). Microwave antigen retrieval performed with 0.01M Tris/EDTA Buffer (pH 9.0) prior to IHC staining.



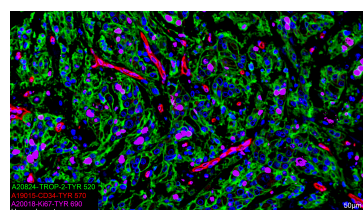
Immunohistochemistry analysis of paraffin-embedded Human lung cancer using CD34 Rabbit mAb (A19015) at dilution of 1:100 (40x lens). Microwave antigen retrieval performed with 0.01M Tris/EDTA Buffer (pH 9.0) prior to IHC staining.



Immunohistochemistry analysis of paraffin-embedded Human tonsil using CD34 Rabbit mAb (A19015) at dilution of 1:100 (40x lens). Microwave antigen retrieval performed with 0.01M Tris/EDTA Buffer (pH 9.0) prior to IHC staining.



The multiplex IHC analysis on paraffin-embedded Human cervical cancer tissue using the following specific primary antibodies and tyramide signal amplification (TSA) reagents (RK05903) : TROP-2 Rabbit mAb (A20824, 1:8000) with TSA-TYR-520 (Green), CD34 Rabbit mAb (A19015, 1:100) with TSA-TYR-570 (Red), and Ki67 Rabbit mAb (A20018, 1:500) with TSA-TYR-690 (Magenta).



The multiplex IHC analysis on paraffin-embedded Human breast cancer tissue using the following specific primary antibodies and tyramide signal amplification (TSA) reagents (RK05903) : TROP-2 Rabbit mAb (A20824, 1:8000) with TSA-TYR-520 (Green), CD34 Rabbit mAb (A19015, 1:100) with TSA-TYR-570 (Red), and Ki67 Rabbit mAb (A20018, 1:500) with TSA-TYR-690 (Magenta).

Validation Data

DAPI (Blue) was used for nuclear staining. Prior to multiplex IHC staining, high-pressure antigen retrieval was performed using 0.01M citrate buffer at pH 6.0. The analysis was completed using a 20x objective lens.

DAPI (Blue) was used for nuclear staining. Prior to multiplex IHC staining, high-pressure antigen retrieval was performed using 0.01M citrate buffer at pH 6.0. The analysis was completed using a 20x objective lens.