

A19034

Leader in Biomolecular Solutions for Life Science



Cullin 1 Rabbit mAb

Catalog No.: A19034

Recombinant

Basic Information

Observed MW

90kDa

Calculated MW

90kDa

Category

SMab Recombinant Monoclonal
Antibody

Applications

WB,ELISA

Cross-Reactivity

Human,Mouse,Rat

CloneNo number

ARC0436

Background

Predicted to enable ubiquitin protein ligase binding activity and ubiquitin-protein transferase activity. Involved in SCF-dependent proteasomal ubiquitin-dependent protein catabolic process and protein ubiquitination. Located in plasma membrane. Part of Parkin-FBXW7-Cul1 ubiquitin ligase complex and SCF ubiquitin ligase complex.

Recommended Dilutions

WB 1:500 - 1:1000

ELISA Recommended starting concentration is 1 µg/mL. Please optimize the concentration based on your specific assay requirements.

Immunogen Information

Gene ID

8454

Swiss Prot

Q13616

Immunogen

A synthetic peptide corresponding to a sequence within amino acids 677-776 of human Cullin 1 (Q13616).

Synonyms

Cullin 1; CUL1; cullin-1; MGC149834; MGC149835

Contact



www.abclonal.com

Product Information

Source

Rabbit

Isotype

IgG

Purification

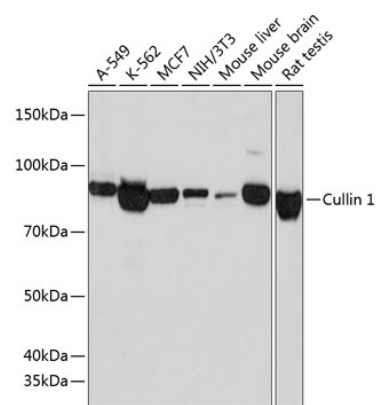
Affinity purification

Storage

Store at -20°C. Avoid freeze / thaw cycles.

Buffer: PBS with 0.02% sodium azide,0.05% BSA,50% glycerol,pH7.3.

Validation Data



Western blot analysis of various lysates using Cullin 1 Rabbit mAb (A19034) at 1:1000 dilution.
Secondary antibody: HRP-conjugated Goat anti-Rabbit IgG (H+L) (AS014) at 1:10000 dilution.
Lysates/proteins: 25µg per lane.
Blocking buffer: 3% nonfat dry milk in TBST.
Detection: ECL Basic Kit (RM00020).
Exposure time: 60s.