

A19035

Leader in Biomolecular Solutions for Life Science



CXCR4 Rabbit mAb

Catalog No.: A19035

Recombinant

1 Publications

Basic Information

Observed MW

43kDa

Calculated MW

40kDa

Category

SMab Recombinant Monoclonal
Antibody

Applications

WB, ELISA

Cross-Reactivity

Human

CloneNo number

ARC0381

Background

This gene encodes a CXC chemokine receptor specific for stromal cell-derived factor-1. The protein has 7 transmembrane regions and is located on the cell surface. It acts with the CD4 protein to support HIV entry into cells and is also highly expressed in breast cancer cells. Mutations in this gene have been associated with WHIM (warts, hypogammaglobulinemia, infections, and myelokathexis) syndrome. Alternate transcriptional splice variants, encoding different isoforms, have been characterized.

Recommended Dilutions

WB 1:1000 - 1:2000

ELISA Recommended starting concentration is 1 µg/mL. Please optimize the concentration based on your specific assay requirements.

Immunogen Information

Gene ID

7852

Swiss Prot

P61073

Immunogen

A synthetic peptide corresponding to a sequence within amino acids 253-352 of human CXCR4 (P61073).

Synonyms

FB22; HM89; LAP3; LCR1; NPYR; WHIM; CD184; LAP-3; LESTR; NPY3R; NPYRL; WHIMS; HSY3RR; NPYY3R; WHIMS1; D2S201E; CXCR4

Contact

 www.abclonal.com

Product Information

Source

Rabbit

Isotype

IgG

Purification

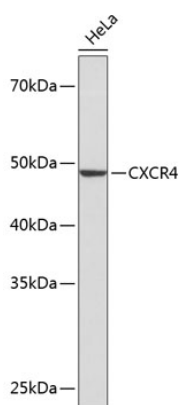
Affinity purification

Storage

Store at -20°C. Avoid freeze / thaw cycles.

Buffer: PBS with 0.02% sodium azide, 0.05% BSA, 50% glycerol, pH 7.3.

Validation Data



Western blot analysis of lysates from HeLa cells, using CXCR4 Rabbit mAb (A19035) at 1:1000 dilution.

Secondary antibody: HRP-conjugated Goat anti-Rabbit IgG (H+L) (AS014) at 1:10000 dilution.

Lysates/proteins: 25µg per lane.

Blocking buffer: 3% nonfat dry milk in TBST.

Detection: ECL Basic Kit (RM00020).

Exposure time: 3min.