

A19036

Leader in Biomolecular Solutions for Life Science



# Cyclin A2 Rabbit mAb

Catalog No.: A19036

Recombinant

10 Publications

## Basic Information

### Observed MW

55kDa

### Calculated MW

49kDa

### Category

SMab Recombinant Monoclonal  
Antibody

### Applications

WB,IHC-P,IF/ICC,IP,ELISA

### Cross-Reactivity

Human,Mouse,Rat

### CloneNo number

ARC0359

## Background

The protein encoded by this gene belongs to the highly conserved cyclin family, whose members function as regulators of the cell cycle. This protein binds and activates cyclin-dependent kinase 2 and thus promotes transition through G1/S and G2/M.

## Recommended Dilutions

**WB** 1:1000 - 1:6000

**IHC-P** 1:200 - 1:2000

**IF/ICC** 1:100 - 1:1000

**IP** 0.5µg-4µg antibody for  
200µg-400µg extracts  
of whole cells

**ELISA** Recommended starting  
concentration is 1  
µg/mL. Please optimize  
the concentration  
based on your specific  
assay requirements.

## Immunogen Information

### Gene ID

890

### Swiss Prot

P20248

### Immunogen

Recombinant fusion protein containing a sequence corresponding to amino acids 11-210 of human Cyclin A2 (P20248).

### Synonyms

CCN1; CCNA; Cyclin A2

## Product Information

### Source

Rabbit

### Isotype

IgG

### Purification

Affinity purification

### Storage

Store at -20°C. Avoid freeze / thaw cycles.

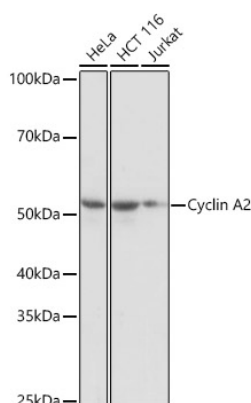
Buffer: PBS with 0.02% sodium azide,0.05% BSA,50% glycerol,pH7.3.

## Contact



[www.abclonal.com](http://www.abclonal.com)

## Validation Data



Western blot analysis of various lysates using Cyclin A2 Rabbit mAb (A19036) at 1:1000 dilution.

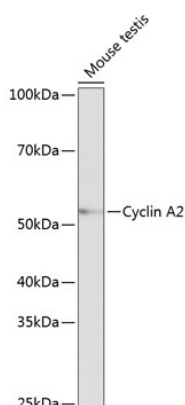
Secondary antibody: HRP-conjugated Goat anti-Rabbit IgG (H+L) (AS014) at 1:10000 dilution.

Lysates/proteins: 25µg per lane.

Blocking buffer: 3% nonfat dry milk in TBST.

Detection: ECL Basic Kit (RM00020).

Exposure time: 1s.



Western blot analysis of lysates from Mouse testis, using Cyclin A2 Rabbit mAb (A19036) at 1:1000 dilution.

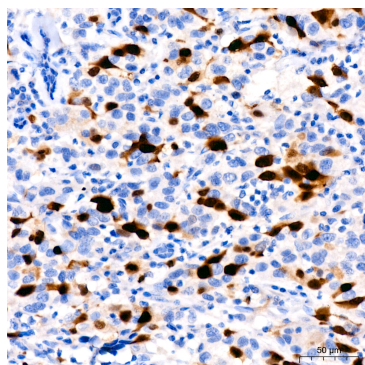
Secondary antibody: HRP-conjugated Goat anti-Rabbit IgG (H+L) (AS014) at 1:10000 dilution.

Lysates/proteins: 25µg per lane.

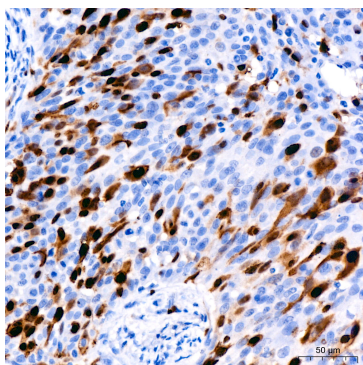
Blocking buffer: 3% nonfat dry milk in TBST.

Detection: ECL Basic Kit (RM00020).

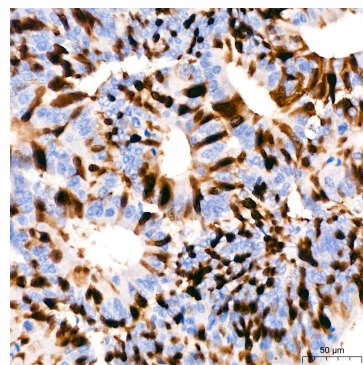
Exposure time: 10s.



Immunohistochemistry analysis of paraffin-embedded Human breast cancer using Cyclin A2 Rabbit mAb (A19036) at dilution of 1:200 (40x lens). High pressure antigen retrieval performed with 0.01M Citrate buffer (pH 6.0) prior to IHC staining.

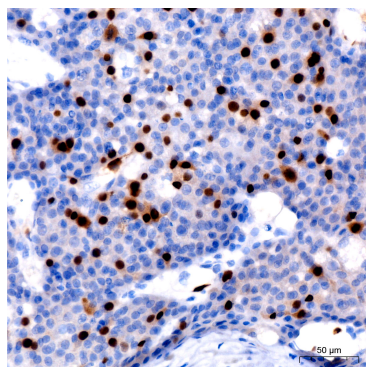


Immunohistochemistry analysis of paraffin-embedded Human cervical squamous cell carcinoma using Cyclin A2 Rabbit mAb (A19036) at dilution of 1:200 (40x lens). High pressure antigen retrieval performed with 0.01M Citrate buffer (pH 6.0) prior to IHC staining.

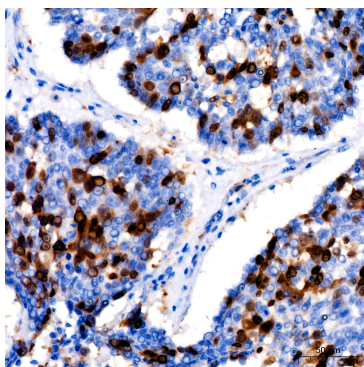


Immunohistochemistry analysis of paraffin-embedded Human colon carcinoma using Cyclin A2 Rabbit mAb (A19036) at dilution of 1:200 (40x lens). High pressure antigen retrieval performed with 0.01M Citrate buffer (pH 6.0) prior to IHC staining.

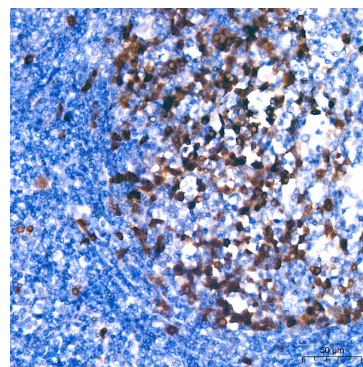
## Validation Data



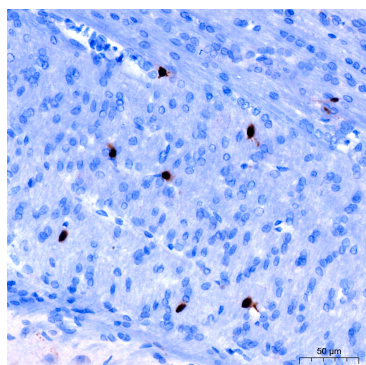
Immunohistochemistry analysis of paraffin-embedded Human liver cancer using Cyclin A2 Rabbit mAb (A19036) at dilution of 1:200 (40x lens). High pressure antigen retrieval performed with 0.01M Citrate buffer (pH 6.0) prior to IHC staining.



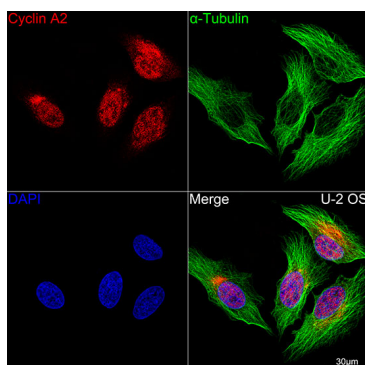
Immunohistochemistry analysis of paraffin-embedded Human lung cancer using Cyclin A2 Rabbit mAb (A19036) at dilution of 1:200 (40x lens). High pressure antigen retrieval performed with 0.01M Citrate buffer (pH 6.0) prior to IHC staining.



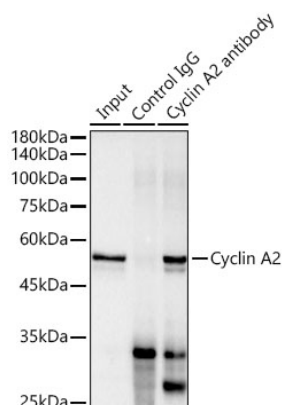
Immunohistochemistry analysis of paraffin-embedded Human tonsil using Cyclin A2 Rabbit mAb (A19036) at dilution of 1:200 (40x lens). High pressure antigen retrieval performed with 0.01M Citrate buffer (pH 6.0) prior to IHC staining.



Immunohistochemistry analysis of paraffin-embedded Rat brain using Cyclin A2 Rabbit mAb (A19036) at dilution of 1:200 (40x lens). High pressure antigen retrieval performed with 0.01M Citrate buffer (pH 6.0) prior to IHC staining.



Confocal imaging of U-2 OS cells using Cyclin A2 Rabbit mAb (A19036, at dilution of 1:100) (Red). The cells were counterstained with  $\alpha$ -Tubulin Mouse mAb (AC012, dilution 1:400) (Green). DAPI was used for nuclear staining (blue). Objective: 100x.



Immunoprecipitation analysis of 300  $\mu$ g extracts of HeLa cells using 3  $\mu$ g Cyclin A2 antibody (A19036). Western blot was performed from the immunoprecipitate using Cyclin A2 antibody (A19036) at a dilution of 1:1000.