

A19037

Leader in Biomolecular Solutions for Life Science



[KO Validated] Cyclin B1 Rabbit mAb

Catalog No.: A19037

KO Validated

Recombinant

19 Publications

Basic Information

Observed MW

55kDa

Calculated MW

48kDa

Category

SMab Recombinant Monoclonal
Antibody

Applications

WB,ELISA

Cross-Reactivity

Human

CloneNo number

ARC0474

Background

The protein encoded by this gene is a regulatory protein involved in mitosis. The gene product complexes with p34(cdc2) to form the maturation-promoting factor (MPF). The encoded protein is necessary for proper control of the G2/M transition phase of the cell cycle.

Recommended Dilutions

WB 1:2500 - 1:10000

ELISA Recommended starting concentration is 1 µg/mL. Please optimize the concentration based on your specific assay requirements.

Immunogen Information

Gene ID

891

Swiss Prot

P14635

Immunogen

Recombinant fusion protein containing a sequence corresponding to amino acids 3-177 of human Cyclin B1 (P14635).

Synonyms

CCNB; B1

Contact



www.abclonal.com

Product Information

Source

Rabbit

Isotype

IgG

Purification

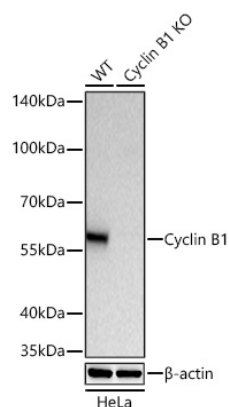
Affinity purification

Storage

Store at -20°C. Avoid freeze / thaw cycles.

Buffer: PBS with 0.02% sodium azide, 0.05% BSA, 50% glycerol, pH7.3.

Validation Data



Western blot analysis of lysates from wild type (WT) and Cyclin B1 knockout (KO) HeLa cells using [KO Validated] Cyclin B1 Rabbit mAb (A19037) at 1:5000 dilution incubated at room temperature for 1.5 hours.

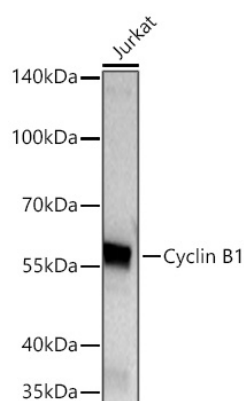
Secondary antibody: HRP-conjugated Goat anti-Rabbit IgG (H+L) (AS014) at 1:10000 dilution.

Lysates/proteins: 25 µg per lane.

Blocking buffer: 3% nonfat dry milk in TBST.

Detection: ECL Basic Kit (RM00020).

Exposure time: 45s.



Western blot analysis of lysates from Jurkat cells using [KO Validated] Cyclin B1 Rabbit mAb (A19037) at 1:5000 dilution incubated at room temperature for 1.5 hours.

Secondary antibody: HRP-conjugated Goat anti-Rabbit IgG (H+L) (AS014) at 1:10000 dilution.

Lysates/proteins: 25 µg per lane.

Blocking buffer: 3% nonfat dry milk in TBST.

Detection: ECL Basic Kit (RM00020).

Exposure time: 45s.