

A19040

Leader in Biomolecular Solutions for Life Science



www.abclonal.com

Cytokeratin 19 (CK19) Rabbit mAb

Catalog No.: A19040

Recombinant

5 Publications

Basic Information

Observed MW

44kDa

Calculated MW

44kDa

Category

SMab Recombinant Monoclonal
Antibody

Applications

WB,IHC-P,IF/ICC,ELISA

Cross-Reactivity

Human

CloneNo number

ARC2811

Recommended Dilutions

WB 1:1000 - 1:5000

IHC-P 1:200 - 1:800

IF/ICC 1:50 - 1:200

ELISA Recommended starting concentration is 1 µg/mL. Please optimize the concentration based on your specific assay requirements.

Contact



www.abclonal.com

Background

The protein encoded by this gene is a member of the keratin family. The keratins are intermediate filament proteins responsible for the structural integrity of epithelial cells and are subdivided into cytokeratins and hair keratins. The type I cytokeratins consist of acidic proteins which are arranged in pairs of heterotypic keratin chains. Unlike its related family members, this smallest known acidic cytokeratin is not paired with a basic cytokeratin in epithelial cells. It is specifically expressed in the periderm, the transiently superficial layer that envelopes the developing epidermis. The type I cytokeratins are clustered in a region of chromosome 17q12-q21.

Immunogen Information

Gene ID

3880

Swiss Prot

P08727

Immunogen

A synthetic peptide corresponding to a sequence within amino acids 1-100 of human Cytokeratin 19 (KRT19) (KRT19) (P08727).

Synonyms

K19; KRT19; K1CS; Cytokeratin 19 (CK19)

Product Information

Source

Rabbit

Isotype

IgG

Purification

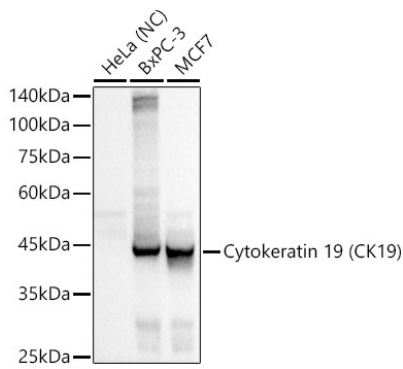
Affinity purification

Storage

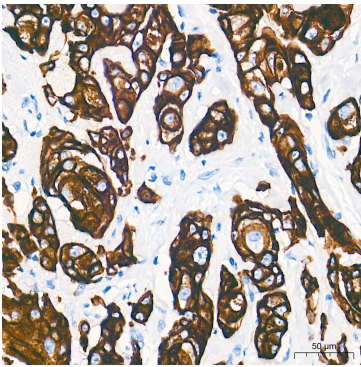
Store at -20°C. Avoid freeze / thaw cycles.

Buffer: PBS with 0.02% sodium azide,0.05% BSA,50% glycerol,pH7.3.

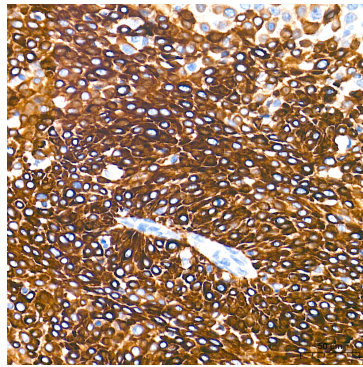
Validation Data



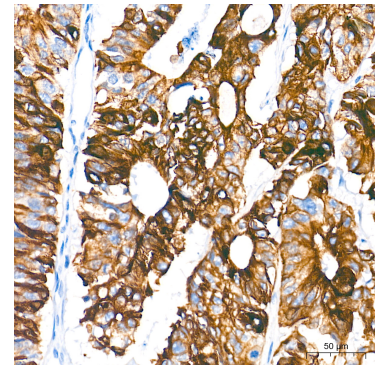
Western blot analysis of various lysates using Cytokeratin 19 (CK19) Rabbit mAb (A19040) at 1:500 dilution incubated overnight at 4°C. Secondary antibody: HRP-conjugated Goat anti-Rabbit IgG (H+L) (AS014) at 1:10000 dilution. Lysates/proteins: 25µg per lane. Blocking buffer: 3% nonfat dry milk in TBST. Detection: ECL Basic Kit (RM00020). Negative control (NC): HeLa. Exposure time: 0.5s.



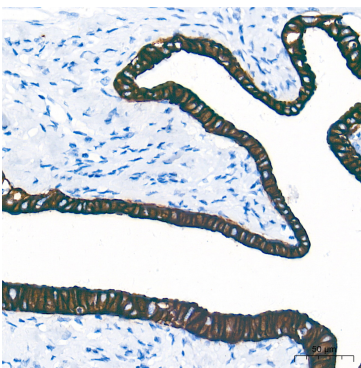
Immunohistochemistry analysis of paraffin-embedded Human breast cancer tissue using Cytokeratin 19 (CK19) Rabbit mAb (A19040) at a dilution of 1:200 (40x lens). High pressure antigen retrieval performed with 0.01M Tris-EDTA Buffer (pH 9.0) prior to IHC staining.



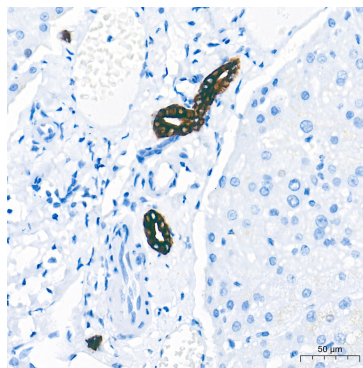
Immunohistochemistry analysis of paraffin-embedded Human cervix cancer tissue using Cytokeratin 19 (CK19) Rabbit mAb (A19040) at a dilution of 1:200 (40x lens). High pressure antigen retrieval performed with 0.01M Tris-EDTA Buffer (pH 9.0) prior to IHC staining.



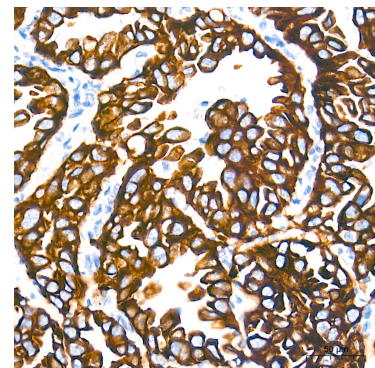
Immunohistochemistry analysis of paraffin-embedded Human colon carcinoma tissue using Cytokeratin 19 (CK19) Rabbit mAb (A19040) at a dilution of 1:200 (40x lens). High pressure antigen retrieval performed with 0.01M Tris-EDTA Buffer (pH 9.0) prior to IHC staining.



Immunohistochemistry analysis of paraffin-embedded Human fallopian tube tissue using Cytokeratin 19 (CK19) Rabbit mAb (A19040) at a dilution of 1:200 (40x lens). High pressure antigen retrieval performed with 0.01M Tris-EDTA Buffer (pH 9.0) prior to IHC staining.

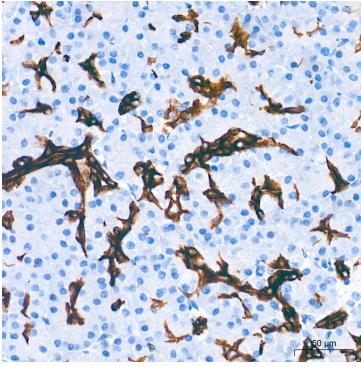


Immunohistochemistry analysis of paraffin-embedded Human liver tissue using Cytokeratin 19 (CK19) Rabbit mAb (A19040) at a dilution of 1:200 (40x lens). High pressure antigen retrieval performed with 0.01M Tris-EDTA Buffer (pH 9.0) prior to IHC staining.

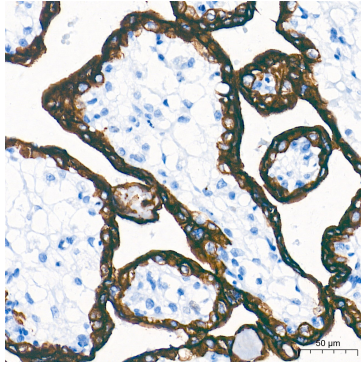


Immunohistochemistry analysis of paraffin-embedded Human lung squamous carcinoma tissue using Cytokeratin 19 (CK19) Rabbit mAb (A19040) at a dilution of 1:200 (40x lens). High pressure antigen retrieval performed with 0.01M Tris-EDTA Buffer (pH 9.0) prior to IHC staining.

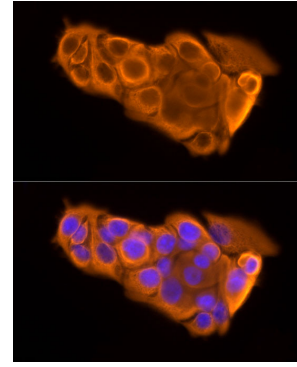
Validation Data



Immunohistochemistry analysis of paraffin-embedded Human pancreas tissue using Cytokeratin 19 (CK19) Rabbit mAb (A19040) at a dilution of 1:200 (40x lens). High pressure antigen retrieval performed with 0.01M Tris-EDTA Buffer (pH 9.0) prior to IHC staining.



Immunohistochemistry analysis of paraffin-embedded Human placenta tissue using Cytokeratin 19 (CK19) Rabbit mAb (A19040) at a dilution of 1:200 (40x lens). High pressure antigen retrieval performed with 0.01M Tris-EDTA Buffer (pH 9.0) prior to IHC staining.



Immunofluorescence analysis of MCF7 cells using Cytokeratin 19 (KRT19) Rabbit mAb (A19040) of 1:20 (40x lens). Secondary antibody: Cy3 Goat anti-Rabbit IgG (H+L)(AS007) at 1:500 dilution. Blue: DAPI for nuclear staining.