

A19041

Leader in Biomolecular Solutions for Life Science



Cytokeratin 20 (CK20) Rabbit mAb

Catalog No.: A19041

Recombinant

1 Publications

Basic Information

Observed MW

44kDa

Calculated MW

48kDa

Category

SMab Recombinant Monoclonal
Antibody

Applications

WB,IHC-P,ELISA

Cross-Reactivity

Human,Rat

CloneNo number

ARC0288

Recommended Dilutions

WB 1:1000 - 1:2000

IHC-P 1:1000 - 1:4000

ELISA Recommended starting concentration is 1 µg/mL. Please optimize the concentration based on your specific assay requirements.

Contact



www.abclonal.com

Background

The protein encoded by this gene is a member of the keratin family. The keratins are intermediate filament proteins responsible for the structural integrity of epithelial cells and are subdivided into cytokeratins and hair keratins. The type I cytokeratins consist of acidic proteins which are arranged in pairs of heterotypic keratin chains. This cytokeratin is a major cellular protein of mature enterocytes and goblet cells and is specifically expressed in the gastric and intestinal mucosa. The type I cytokeratin genes are clustered in a region of chromosome 17q12-q21.

Immunogen Information

Gene ID

54474

Swiss Prot

P35900

Immunogen

A synthetic peptide corresponding to a sequence within amino acids 325-424 of human Cytokeratin 20 (KRT20) (P35900).

Synonyms

K20; CD20; KRT20; CK-20; KRT21; Cytokeratin 20 (CK20)

Product Information

Source

Rabbit

Isotype

IgG

Purification

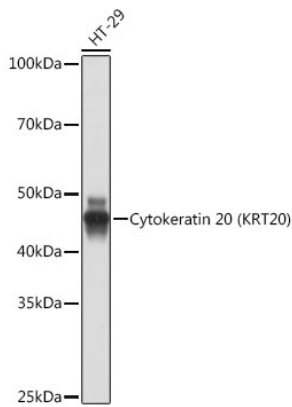
Affinity purification

Storage

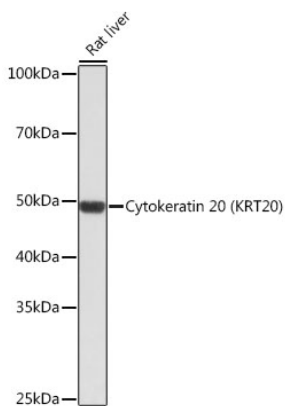
Store at -20°C. Avoid freeze / thaw cycles.

Buffer: PBS with 0.02% sodium azide,0.05% BSA,50% glycerol,pH7.3.

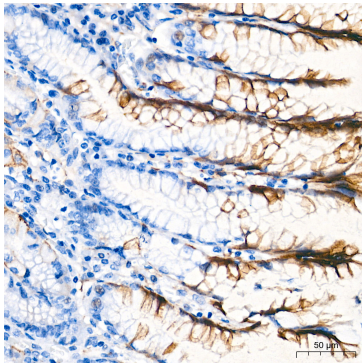
Validation Data



Western blot analysis of lysates from HT-29 cells, using Cytokeratin 20 (CK20) Rabbit mAb (A19041) at 1:1000 dilution.
Secondary antibody: HRP-conjugated Goat anti-Rabbit IgG (H+L) (AS014) at 1:10000 dilution.
Lysates/proteins: 25µg per lane.
Blocking buffer: 3% nonfat dry milk in TBST.
Detection: ECL Basic Kit (RM00020).
Exposure time: 1s.



Western blot analysis of lysates from Rat liver, using Cytokeratin 20 (CK20) Rabbit mAb (A19041) at 1:1000 dilution.
Secondary antibody: HRP-conjugated Goat anti-Rabbit IgG (H+L) (AS014) at 1:10000 dilution.
Lysates/proteins: 25µg per lane.
Blocking buffer: 3% nonfat dry milk in TBST.
Detection: ECL Enhanced Kit (RM00021).
Exposure time: 3min.



Immunohistochemistry analysis of paraffin-embedded Human stomach tissue using Cytokeratin 20 (CK20) Rabbit mAb (A19041) at a dilution of 1:2000 (40x lens). High pressure antigen retrieval performed with 0.01M Tris-EDTA Buffer (pH 9.0) prior to IHC staining.