

A19058

Leader in Biomolecular Solutions for Life Science



GFAP Rabbit mAb

Catalog No.: A19058

Recombinant

25 Publications

Basic Information

Observed MW

48kDa/50kDa

Calculated MW

50kDa

Category

SMab Recombinant Monoclonal
Antibody

Applications

WB,IHC-P,IF/ICC,ELISA

Cross-Reactivity

Human,Mouse,Rat

CloneNo number

ARC0206

Background

This gene encodes one of the major intermediate filament proteins of mature astrocytes. It is used as a marker to distinguish astrocytes from other glial cells during development. Mutations in this gene cause Alexander disease, a rare disorder of astrocytes in the central nervous system. Alternative splicing results in multiple transcript variants encoding distinct isoforms.

Recommended Dilutions

WB 1:1000 - 1:2000

IHC-P 1:200 - 1:800

IF/ICC 1:200 - 1:2000

ELISA Recommended starting concentration is 1 µg/mL. Please optimize the concentration based on your specific assay requirements.

Immunogen Information

Gene ID

2670

Swiss Prot

P14136

Immunogen

A synthetic peptide corresponding to a sequence within amino acids 1-100 of human GFAP (P14136).

Synonyms

ALXDRD; GFAP

Product Information

Source

Rabbit

Isotype

IgG

Purification

Affinity purification

Storage

Store at -20°C. Avoid freeze / thaw cycles.

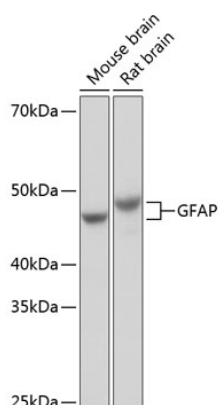
Buffer: PBS with 0.09% Sodium azide,0.05% BSA,50% glycerol,pH7.3.

Contact

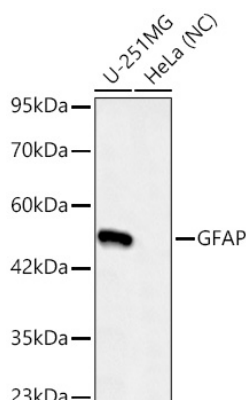


www.abclonal.com

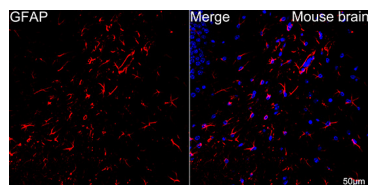
Validation Data



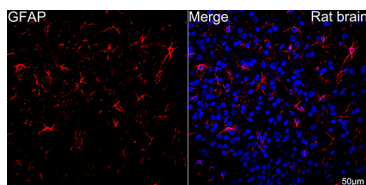
Western blot analysis of various lysates using GFAP Rabbit mAb (A19058) at 1:1000 dilution incubated overnight at 4°C.
 Secondary antibody: HRP-conjugated Goat anti-Rabbit IgG (H+L) (AS014) at 1:10000 dilution.
 Lysates/proteins: 25µg per lane.
 Blocking buffer: 3% nonfat dry milk in TBST.
 Detection: ECL Basic Kit (RM00020).
 Exposure time: 1s.



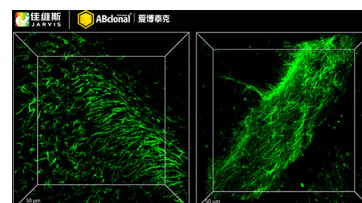
Western blot analysis of various lysates using GFAP Rabbit mAb (A19058) at 1:1000 dilution incubated overnight at 4°C.
 Secondary antibody: HRP-conjugated Goat anti-Rabbit IgG (H+L) (AS014) at 1:10000 dilution.
 Lysates/proteins: 25 µg per lane.
 Blocking buffer: 3% nonfat dry milk in TBST.
 Detection: ECL Basic Kit (RM00020).
 Negative control (NC): HeLa
 Exposure time: 45s.



Confocal imaging of paraffin-embedded Mouse brain tissue using GFAP Rabbit mAb (A19058, dilution 1:2000) followed by a further incubation with Cy3 Goat Anti-Rabbit IgG (H+L) (AS007, dilution 1:500) (Red). DAPI was used for nuclear staining (Blue). High pressure antigen retrieval performed with 0.01M Citrate Buffer (pH 6.0) prior to IF staining. Objective: 40x.

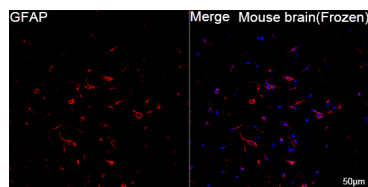


Confocal imaging of paraffin-embedded Rat brain tissue using GFAP Rabbit mAb (A19058, dilution 1:2000) followed by a further incubation with Cy3 Goat Anti-Rabbit IgG (H+L) (AS007, dilution 1:500) (Red). DAPI was used for nuclear staining (Blue). High pressure antigen retrieval performed with 0.01M Citrate Buffer (pH 6.0) prior to IF staining. Objective: 40x.

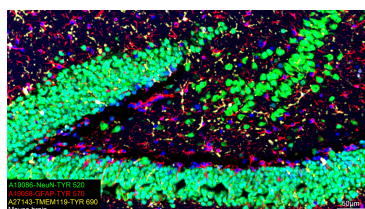


3D imaging of solvent-cleared mouse brain sections (at a thickness of 1 mm) using GFAP Rabbit mAb (A19058, diluted at a ratio of 1:200). FDISCO JA11011 was used for sample clearing. We acknowledge Jarvis (Wuhan) Bio - Pharma Co., Ltd. in 3D imaging processing and kindly providing this image.

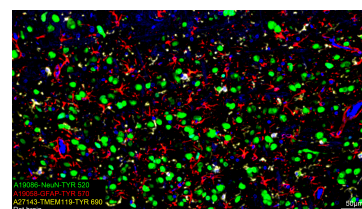
Validation Data



Confocal imaging of frozen sections Mouse brain tissue using GFAP Rabbit mAb (A19058, dilution 1:200) followed by a further incubation with Cy3 Goat Anti-Rabbit IgG (H+L) (AS007, dilution 1:500) (Red). DAPI was used for nuclear staining (Blue). Microwave antigen retrieval performed with 0.01M Citrate Buffer (pH 6.0) prior to IF staining. Objective: 40x.



The multiplex IHC analysis on paraffin-embedded Mouse brain tissue using the following specific primary antibodies and tyramide signal amplification (TSA) reagents (RK05903) : NeuN Rabbit mAb (A19086, 1:2000) with TSA-TYR-520 (Green), GFAP Rabbit mAb (A19058, 1:500) with TSA-TYR-570 (Red), and TMEM119 Rabbit mAb (A27143, 1:600) with TSA-TYR-690 (Yellow). DAPI (Blue) was used for nuclear staining. Prior to multiplex IHC staining, high-pressure antigen retrieval was performed using 0.01M citrate buffer at pH 6.0. The analysis was completed using a 20x objective lens.



The multiplex IHC analysis on paraffin-embedded Rat brain tissue using the following specific primary antibodies and tyramide signal amplification (TSA) reagents (RK05903) : NeuN Rabbit mAb (A19086, 1:2000) with TSA-TYR-520 (Green), GFAP Rabbit mAb (A19058, 1:500) with TSA-TYR-570 (Red), and TMEM119 Rabbit mAb (A27143, 1:600) with TSA-TYR-690 (Yellow). DAPI (Blue) was used for nuclear staining. Prior to multiplex IHC staining, high-pressure antigen retrieval was performed using 0.01M citrate buffer at pH 6.0. The analysis was completed using a 20x objective lens.