

A19069

Leader in Biomolecular Solutions for Life Science



# Integrin alpha 5 (ITGA5/CD49e) Rabbit mAb

Catalog No.: A19069

Recombinant

6 Publications

## Basic Information

### Observed MW

150kDa (Full-length)/17kDa (light chain)

### Calculated MW

115kDa

### Category

SMab Recombinant Monoclonal Antibody

### Applications

WB,IHC-P,ELISA,FC (intra)

### Cross-Reactivity

Human,Mouse,Rat

### CloneNo number

ARC0370

## Recommended Dilutions

**WB** 1:1000 - 1:6000

**IHC-P** 1:200 - 1:2000

**FC (intra)** 1:50 - 1:200

**ELISA** Recommended starting concentration is 1 µg/mL. Please optimize the concentration based on your specific assay requirements.

## Contact



[www.abclonal.com](http://www.abclonal.com)

## Background

The product of this gene belongs to the integrin alpha chain family. Integrins are heterodimeric integral membrane proteins composed of an alpha subunit and a beta subunit that function in cell surface adhesion and signaling. The encoded preproprotein is proteolytically processed to generate light and heavy chains that comprise the alpha 5 subunit. This subunit associates with the beta 1 subunit to form a fibronectin receptor. This integrin may promote tumor invasion, and higher expression of this gene may be correlated with shorter survival time in lung cancer patients. Note that the integrin alpha 5 and integrin alpha V subunits are encoded by distinct genes.

## Immunogen Information

**Gene ID**  
3678

**Swiss Prot**  
P08648

### Immunogen

Synthetic peptide. This information is considered to be commercially sensitive.

### Synonyms

FNRA; CD49e; VLA-5; VLA5A; Integrin alpha 5 (ITGA5/CD49e)

## Product Information

**Source**  
Rabbit

**Isotype**  
IgG

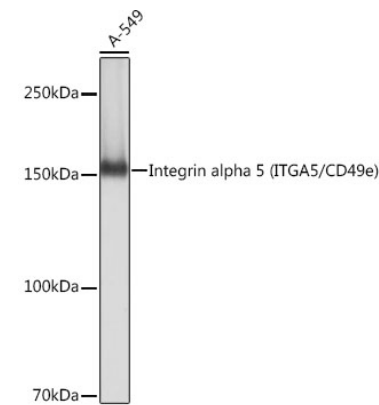
**Purification**  
Affinity purification

### Storage

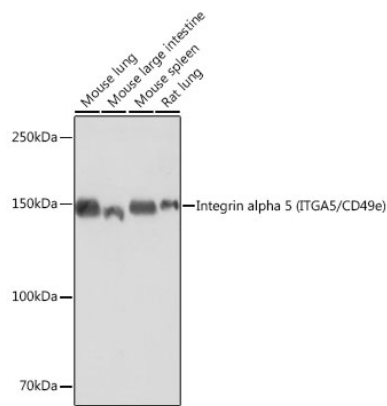
Store at -20°C. Avoid freeze / thaw cycles.

Buffer: PBS with 0.02% sodium azide,0.05% BSA,50% glycerol,pH7.3.

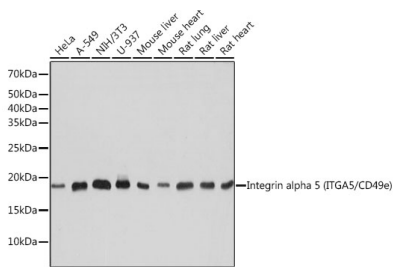
Validation Data



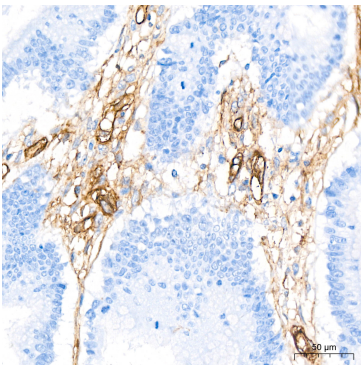
Western blot analysis of lysates from A-549 cells, using Integrin alpha 5 (ITGA5/CD49e) Rabbit mAb (A19069) at 1:1000 dilution.  
Secondary antibody: HRP-conjugated Goat anti-Rabbit IgG (H+L) (AS014) at 1:10000 dilution.  
Lysates/proteins: 25µg per lane.  
Blocking buffer: 3% nonfat dry milk in TBST.  
Detection: ECL Basic Kit (RM00020).  
Exposure time: 1s.



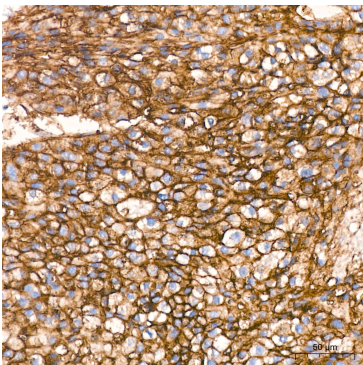
Western blot analysis of various lysates using Integrin alpha 5 (ITGA5/CD49e) Rabbit mAb (A19069) at 1:1000 dilution.  
Secondary antibody: HRP-conjugated Goat anti-Rabbit IgG (H+L) (AS014) at 1:10000 dilution.  
Lysates/proteins: 25µg per lane.  
Blocking buffer: 3% nonfat dry milk in TBST.  
Detection: ECL Basic Kit (RM00020).  
Exposure time: 10s.



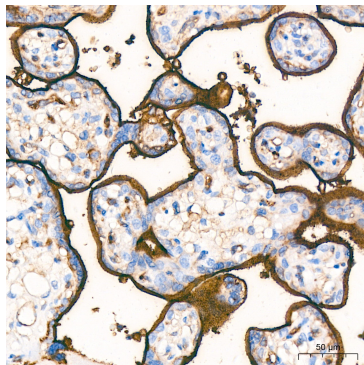
Western blot analysis of various lysates using Integrin alpha 5 (ITGA5/CD49e) Rabbit mAb (A19069) at 1:1000 dilution.  
Secondary antibody: HRP-conjugated Goat anti-Rabbit IgG (H+L) (AS014) at 1:10000 dilution.  
Lysates/proteins: 25µg per lane.  
Blocking buffer: 3% nonfat dry milk in TBST.  
Detection: ECL Basic Kit (RM00020).  
Exposure time: 1s.



Immunohistochemistry analysis of paraffin-embedded Human colon



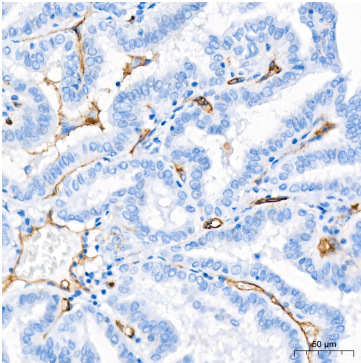
Immunohistochemistry analysis of paraffin-embedded Human liver



Immunohistochemistry analysis of paraffin-embedded Human placenta

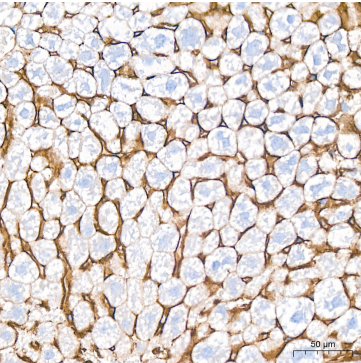
Validation Data

carcinoma tissue using Integrin alpha 5 (ITGA5/CD49e) Rabbit mAb (A19069) at a dilution of 1:200 (40x lens). High pressure antigen retrieval performed with 0.01M Citrate buffer (pH 6.0) prior to IHC staining.



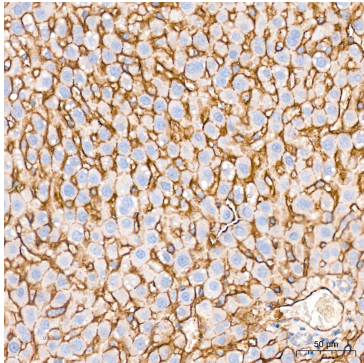
Immunohistochemistry analysis of paraffin-embedded Human thyroid cancer tissue using Integrin alpha 5 (ITGA5/CD49e) Rabbit mAb (A19069) at a dilution of 1:200 (40x lens). High pressure antigen retrieval performed with 0.01M Citrate buffer (pH 6.0) prior to IHC staining.

cancer tissue using Integrin alpha 5 (ITGA5/CD49e) Rabbit mAb (A19069) at a dilution of 1:200 (40x lens). High pressure antigen retrieval performed with 0.01M Citrate buffer (pH 6.0) prior to IHC staining.



Immunohistochemistry analysis of paraffin-embedded Mouse liver tissue using Integrin alpha 5 (ITGA5/CD49e) Rabbit mAb (A19069) at a dilution of 1:200 (40x lens). High pressure antigen retrieval performed with 0.01M Citrate buffer (pH 6.0) prior to IHC staining.

tissue using Integrin alpha 5 (ITGA5/CD49e) Rabbit mAb (A19069) at a dilution of 1:200 (40x lens). High pressure antigen retrieval performed with 0.01M Citrate buffer (pH 6.0) prior to IHC staining.



Immunohistochemistry analysis of paraffin-embedded Rat liver tissue using Integrin alpha 5 (ITGA5/CD49e) Rabbit mAb (A19069) at a dilution of 1:200 (40x lens). High pressure antigen retrieval performed with 0.01M Citrate buffer (pH 6.0) prior to IHC staining.