

A19083

Leader in Biomolecular Solutions for Life Science



## [KO Validated] N-Cadherin Rabbit mAb

Catalog No.: A19083

**KO** Validated

Recombinant

115 Publications

### Basic Information

#### Observed MW

140kDa

#### Calculated MW

100kDa

#### Category

SMab Recombinant Monoclonal  
Antibody

#### Applications

WB,IHC-P,IF/ICC,ELISA

#### Cross-Reactivity

Human,Mouse,Rat

#### CloneNo number

ARC0371

### Background

This gene encodes a classical cadherin and member of the cadherin superfamily. Alternative splicing results in multiple transcript variants, at least one of which encodes a preproprotein is proteolytically processed to generate a calcium-dependent cell adhesion molecule and glycoprotein. This protein plays a role in the establishment of left-right asymmetry, development of the nervous system and the formation of cartilage and bone.

### Recommended Dilutions

**WB** 1:1000 - 1:2000

**IHC-P** 1:200 - 1:2000

**IF/ICC** 1:50 - 1:200

**ELISA** Recommended starting concentration is 1 µg/mL. Please optimize the concentration based on your specific assay requirements.

### Immunogen Information

#### Gene ID

1000

#### Swiss Prot

P19022

#### Immunogen

A synthetic peptide corresponding to a sequence within amino acids 100-200 of human N Cadherin (P19022).

#### Synonyms

CDHN; NCAD; ACOGS; ADHD8; CD325; ARVD14; CDw325; in

### Product Information

#### Source

Rabbit

#### Isotype

IgG

#### Purification

Affinity purification

#### Storage

Store at -20°C. Avoid freeze / thaw cycles.

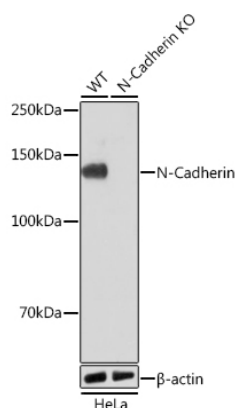
Buffer: PBS with 0.09% sodium azide,0.05% BSA,50% glycerol,pH7.3.

### Contact

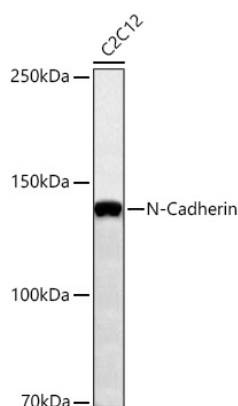


[www.abclonal.com](http://www.abclonal.com)

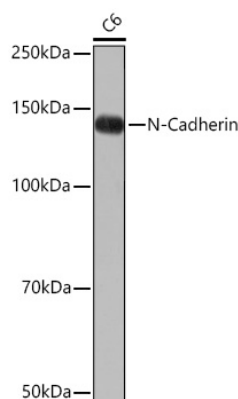
## Validation Data



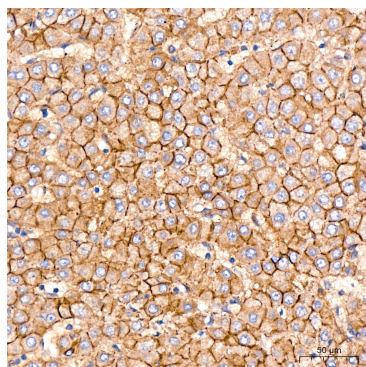
Western blot analysis of lysates from wild type (WT) and N-Cadherin knockout (KO) HeLa cells using [KO Validated] N-Cadherin Rabbit mAb (A19083) at 1:1000 dilution incubated overnight at 4°C.  
 Secondary antibody: HRP-conjugated Goat anti-Rabbit IgG (H+L) (AS014) at 1:10000 dilution.  
 Lysates/proteins: 25µg per lane.  
 Blocking buffer: 3% nonfat dry milk in TBST.  
 Detection: ECL Basic Kit (RM00020).  
 Exposure time: 1min.



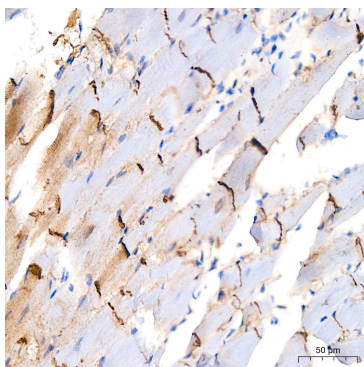
Western blot analysis of lysates from C2C12 cells using [KO Validated] N-Cadherin Rabbit mAb (A19083) at 1:1000 dilution incubated overnight at 4°C.  
 Secondary antibody: HRP-conjugated Goat anti-Rabbit IgG (H+L) (AS014) at 1:10000 dilution.  
 Lysates/proteins: 25 µg per lane.  
 Blocking buffer: 3% nonfat dry milk in TBST.  
 Detection: ECL Basic Kit (RM00020).  
 Exposure time: 60s.



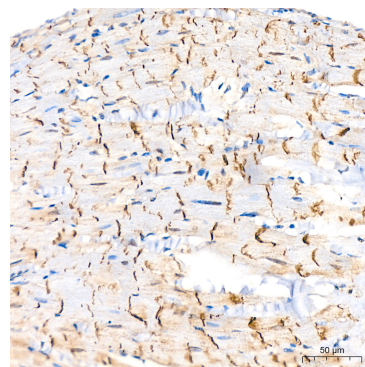
Western blot analysis of lysates from C6 cells using [KO Validated] N-Cadherin Rabbit mAb (A19083) at 1:1000 dilution incubated overnight at 4°C.  
 Secondary antibody: HRP-conjugated Goat anti-Rabbit IgG (H+L) (AS014) at 1:10000 dilution.  
 Lysates/proteins: 25 µg per lane.  
 Blocking buffer: 3% nonfat dry milk in TBST.  
 Detection: ECL Basic Kit (RM00020).  
 Exposure time: 10s.



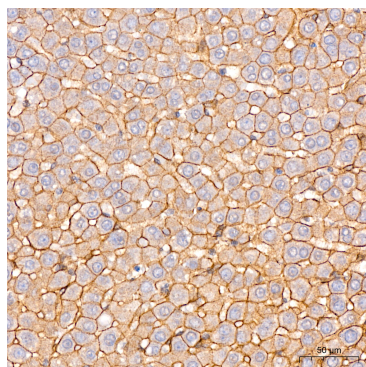
Immunohistochemistry analysis of paraffin-embedded Human liver tissue using [KO Validated] N-Cadherin Rabbit mAb (A19083) at a dilution of 1:200 (40x lens). High pressure antigen retrieval performed with 0.01M Citrate Buffer (pH 6.0) prior to IHC staining.



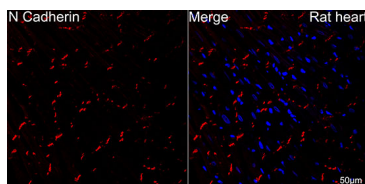
Immunohistochemistry analysis of paraffin-embedded Mouse heart tissue using [KO Validated] N-Cadherin Rabbit mAb (A19083) at a dilution of 1:200 (40x lens). High pressure antigen retrieval performed with 0.01M Citrate Buffer (pH 6.0) prior to IHC staining.



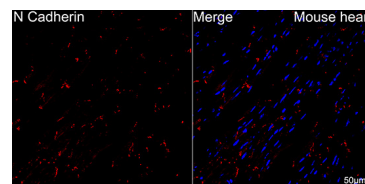
Immunohistochemistry analysis of paraffin-embedded Rat heart tissue using [KO Validated] N-Cadherin Rabbit mAb (A19083) at a dilution of 1:200 (40x lens). High pressure antigen retrieval performed with 0.01M Citrate Buffer (pH 6.0) prior to IHC staining.



Immunohistochemistry analysis of paraffin-embedded Rat liver tissue using [KO Validated] N-Cadherin Rabbit mAb (A19083) at a dilution of 1:200 (40x lens). High pressure antigen retrieval performed with 0.01M Citrate Buffer (pH 6.0) prior to IHC staining.



Confocal imaging of paraffin-embedded rat heart using [KO Validated] N-Cadherin Rabbit mAb (A19083, dilution 1:200) followed by a further incubation with Cy3 Goat Anti-Rabbit IgG (H+L) (AS007, dilution 1:500) (Red). DAPI was used for nuclear staining (Blue). Objective: 40x. High pressure antigen retrieval performed with 0.01M Citrate Buffer(pH 6.0) prior to IF staining.



Confocal imaging of paraffin-embedded Mouse heart using [KO Validated] N-Cadherin Rabbit mAb (A19083, dilution 1:200) followed by a further incubation with Cy3 Goat Anti-Rabbit IgG (H+L) (AS007, dilution 1:500) (Red). DAPI was used for nuclear staining (Blue). Objective: 40x. High pressure antigen retrieval performed with 0.01M Citrate Buffer(pH 6.0) prior to IF staining.