

A19106

Leader in Biomolecular Solutions for Life Science



RhoA Rabbit mAb

Catalog No.: A19106

Recombinant

2 Publications

Basic Information

Observed MW

22kDa

Calculated MW

22kDa

Category

SMab Recombinant Monoclonal
Antibody

Applications

WB,ELISA

Cross-Reactivity

Human

CloneNo number

ARC0372

Recommended Dilutions

WB 1:500 - 1:1000

Background

This gene encodes a member of the Rho family of small GTPases, which cycle between inactive GDP-bound and active GTP-bound states and function as molecular switches in signal transduction cascades. Rho proteins promote reorganization of the actin cytoskeleton and regulate cell shape, attachment, and motility. Overexpression of this gene is associated with tumor cell proliferation and metastasis. Multiple alternatively spliced variants have been identified.

Immunogen Information

Gene ID

387

Swiss Prot

P61586

Immunogen

A synthetic peptide corresponding to a sequence within amino acids 1-100 of human RhoA (P61586).

Synonyms

ARHA; RhoA

Contact

 www.abclonal.com

Product Information

Source

Rabbit

Isotype

IgG

Purification

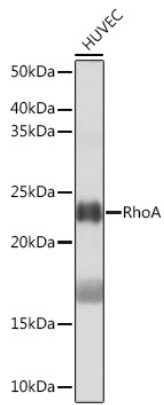
Affinity purification

Storage

Store at -20°C. Avoid freeze / thaw cycles.

Buffer: PBS with 0.02% sodium azide,0.05% BSA,50% glycerol,pH7.3.

Validation Data



Western blot analysis of extracts of HUVEC cells, using RhoA antibody (A19106) at 1:1000 dilution.

Secondary antibody: HRP Goat Anti-Rabbit IgG (H+L) (AS014) at 1:10000 dilution.

Lysates/proteins: 25µg per lane.

Blocking buffer: 3% nonfat dry milk in TBST.

Detection: ECL Basic Kit (RM00020).

Exposure time: 3min.