

A19110

Leader in Biomolecular Solutions for Life Science



# Serotonin transporter Rabbit mAb

Catalog No.: A19110

Recombinant

## Basic Information

### Observed MW

70kDa/

### Calculated MW

70kDa/75kDa

### Category

SMab Recombinant Monoclonal  
Antibody

### Applications

WB,IF/ICC,IP,ELISA

### Cross-Reactivity

Human,Rat

### CloneNo number

ARC0441

## Recommended Dilutions

**WB** 1:500 - 1:1000

**IF/ICC** 1:50 - 1:200

**IP** 0.5µg-4µg antibody for  
400µg-600µg extracts  
of whole cells

**ELISA** Recommended starting  
concentration is 1  
µg/mL. Please optimize  
the concentration  
based on your specific  
assay requirements.

## Contact



[www.abclonal.com](http://www.abclonal.com)

## Background

This gene encodes an integral membrane protein that transports the neurotransmitter serotonin from synaptic spaces into presynaptic neurons. The encoded protein terminates the action of serotonin and recycles it in a sodium-dependent manner. This protein is a target of psychomotor stimulants, such as amphetamines and cocaine, and is a member of the sodium:neurotransmitter symporter family. A repeat length polymorphism in the promoter of this gene has been shown to affect the rate of serotonin uptake. There have been conflicting results in the literature about the possible effect, if any, that this polymorphism may play in behavior and depression.

## Immunogen Information

**Gene ID**  
6532

**Swiss Prot**  
P31645

### Immunogen

Synthetic peptide. This information is considered to be commercially sensitive.

### Synonyms

HTT; 5HTT; OCD1; SERT; 5-HTT; SERT1; hSERT; 5-HTTLPR; Serotonin transporter

## Product Information

**Source**  
Rabbit

**Isotype**  
IgG

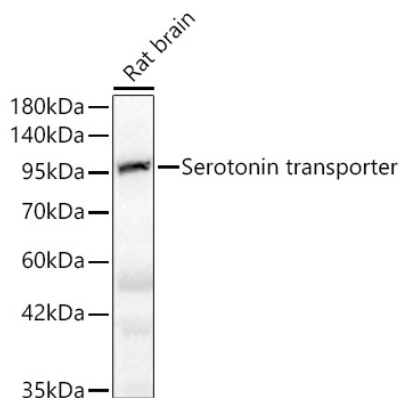
**Purification**  
Affinity purification

### Storage

Store at -20°C. Avoid freeze / thaw cycles.

Buffer: PBS with 0.02% sodium azide,0.05% BSA,50% glycerol,pH7.3.

## Validation Data



Western blot analysis of rat brain using Serotonin transporter Rabbit mAb (A19110) at 1:1000 dilution.

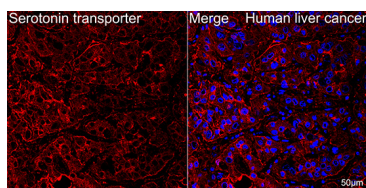
Secondary antibody: HRP-conjugated Goat anti-Rabbit IgG (H+L) (AS014) at 1:10000 dilution.

Lysates/proteins: 25µg per lane.

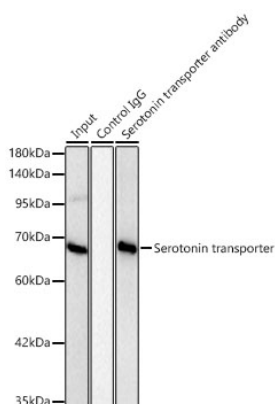
Blocking buffer: 3% nonfat dry milk in TBST.

Detection: ECL Basic Kit (RM00020).

Exposure time: 5s.



Confocal imaging of paraffin-embedded Human liver cancer tissue using Serotonin transporter Rabbit mAb (A19110, dilution 1:200) followed by a further incubation with Cy3 Goat Anti-Rabbit IgG (H+L) (AS007, dilution 1:500) (Red). DAPI was used for nuclear staining (Blue). Objective: 40x. Perform high pressure antigen retrieval with 0.01 M citrate buffer (pH 6.0) prior to IF staining.



Immunoprecipitation of Serotonin transporter from 500 µg extracts of HT-29 cells was performed using 2 µg of Serotonin transporter Rabbit mAb (A19110). Rabbit IgG isotype control (AC042) was used to precipitate the Control IgG sample. IP samples were eluted with 1X Laemmli Buffer. The Input lane represents 10% of the total input. Western blot analysis of immunoprecipitates was conducted using Serotonin transporter Rabbit mAb (A19110) at a dilution of 1:1000.