

A19119

Leader in Biomolecular Solutions for Life Science



[KO Validated] Src Rabbit mAb

Catalog No.: A19119

KO Validated

Recombinant

15 Publications

Basic Information

Observed MW

60kDa

Calculated MW

60kDa

Category

SMab Recombinant Monoclonal
Antibody

Applications

WB,IF/ICC,IP,ELISA

Cross-Reactivity

Human,Mouse,Rat

CloneNo number

ARC0378

Background

This gene is highly similar to the v-src gene of Rous sarcoma virus. This proto-oncogene may play a role in the regulation of embryonic development and cell growth. The protein encoded by this gene is a tyrosine-protein kinase whose activity can be inhibited by phosphorylation by c-SRC kinase. Mutations in this gene could be involved in the malignant progression of colon cancer. Two transcript variants encoding the same protein have been found for this gene.

Recommended Dilutions

WB 1:1000 - 1:2000

IF/ICC 1:100 - 1:400

IP 0.5µg-4µg antibody for
400µg-600µg extracts
of whole cells

ELISA Recommended starting
concentration is 1
µg/mL. Please optimize
the concentration
based on your specific
assay requirements.

Immunogen Information

Gene ID

6714

Swiss Prot

P12931

Immunogen

A synthetic peptide corresponding to a sequence within amino acids 1-100 of human Src (P12931).

Synonyms

ASV; SRC1; THC6; c-SRC; p60-Src; rc

Product Information

Source

Rabbit

Isotype

IgG

Purification

Affinity purification

Storage

Store at -20°C. Avoid freeze / thaw cycles.

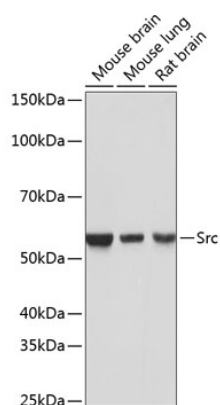
Buffer: PBS with 0.02% sodium azide,0.05% BSA,50% glycerol,pH7.3.

Contact



www.abclonal.com

Validation Data



Western blot analysis of various lysates using [KO Validated] Src Rabbit mAb (A19119) at 1:1000 dilution.

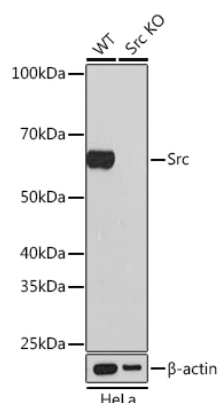
Secondary antibody: HRP-conjugated Goat anti-Rabbit IgG (H+L) (AS014) at 1:10000 dilution.

Lysates/proteins: 25µg per lane.

Blocking buffer: 3% nonfat dry milk in TBST.

Detection: ECL Basic Kit (RM00020).

Exposure time: 1s.



Western blot analysis of lysates from wild type (WT) and Src knockout (KO) HeLa cells, using [KO Validated] Src Rabbit mAb (A19119) at 1:1000 dilution.

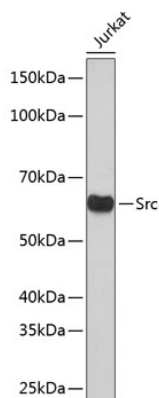
Secondary antibody: HRP-conjugated Goat anti-Rabbit IgG (H+L) (AS014) at 1:10000 dilution.

Lysates/proteins: 25µg per lane.

Blocking buffer: 3% nonfat dry milk in TBST.

Detection: ECL Basic Kit (RM00020).

Exposure time: 1min.



Western blot analysis of lysates from Jurkat cells, using [KO Validated] Src Rabbit mAb (A19119) at 1:1000 dilution.

Secondary antibody: HRP-conjugated Goat anti-Rabbit IgG (H+L) (AS014) at 1:10000 dilution.

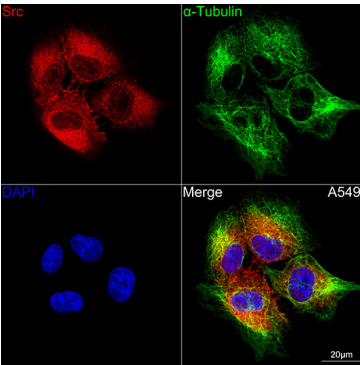
Lysates/proteins: 25µg per lane.

Blocking buffer: 3% nonfat dry milk in TBST.

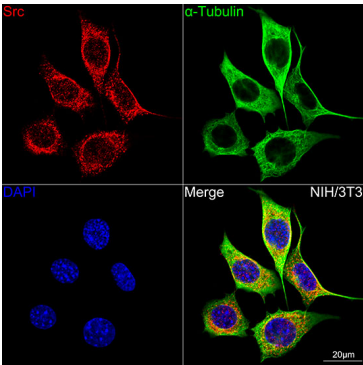
Detection: ECL Basic Kit (RM00020).

Exposure time: 1min.

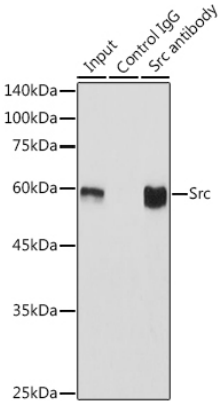
Validation Data



Confocal imaging of A549 cells using [KO Validated] Src Rabbit mAb (A19119,at dilution of 1:100) (Red). The cells were counterstained with α-Tubulin Mouse mAb (AC012,dilution 1:400) (Green). DAPI was used for nuclear staining (blue). Objective: 100x.



Confocal imaging of NIH/3T3 cells using [KO Validated] Src Rabbit mAb (A19119,at dilution of 1:100) (Red). The cells were counterstained with α-Tubulin Mouse mAb (AC012,dilution 1:400) (Green). DAPI was used for nuclear staining (blue). Objective: 100x.



Immunoprecipitation analysis of 600 µg extracts of Mouse brain using 3 µg Src antibody (A19119). Western blot was performed from the immunoprecipitate using Src antibody (A19119) at a dilution of 1:1000.