

A19120

Leader in Biomolecular Solutions for Life Science



# STAT6 Rabbit mAb

Catalog No.: A19120

Recombinant

3 Publications

## Basic Information

### Observed MW

100kDa

### Calculated MW

94kDa

### Category

SMab Recombinant Monoclonal  
Antibody

### Applications

WB,IF/ICC,ELISA

### Cross-Reactivity

Human,Mouse

### CloneNo number

ARC0481

## Recommended Dilutions

**WB** 1:1000 - 1:2000

**IF/ICC** 1:50 - 1:200

**ELISA** Recommended starting concentration is 1 µg/mL. Please optimize the concentration based on your specific assay requirements.

## Contact

 [www.abclonal.com](http://www.abclonal.com)

## Background

The protein encoded by this gene is a member of the STAT family of transcription factors. In response to cytokines and growth factors, STAT family members are phosphorylated by the receptor associated kinases, and then form homo- or heterodimers that translocate to the cell nucleus where they act as transcription activators. This protein plays a central role in exerting IL4 mediated biological responses. It is found to induce the expression of BCL2L1/BCL-X(L), which is responsible for the anti-apoptotic activity of IL4. Knockout studies in mice suggested the roles of this gene in differentiation of T helper 2 (Th2) cells, expression of cell surface markers, and class switch of immunoglobulins. Alternative splicing results in multiple transcript variants.

## Immunogen Information

### Gene ID

6778

### Swiss Prot

P42226

### Immunogen

A synthetic peptide corresponding to a sequence within amino acids 747-847 of human STAT6 (P42226-1).

### Synonyms

STAT6B; STAT6C; D12S1644; IL-4-STAT; STAT6

## Product Information

### Source

Rabbit

### Isotype

IgG

### Purification

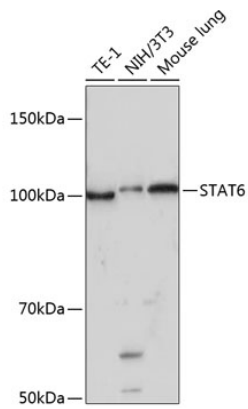
Affinity purification

### Storage

Store at -20°C. Avoid freeze / thaw cycles.

Buffer: PBS with 0.02% sodium azide,0.05% BSA,50% glycerol,pH7.3.

## Validation Data



Western blot analysis of various lysates using STAT6 Rabbit mAb (A19120) at 1:1000 dilution.

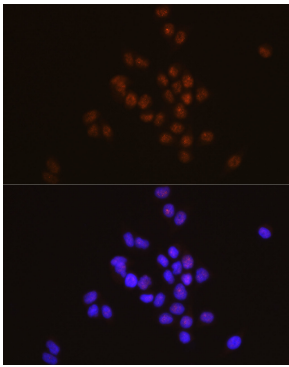
Secondary antibody: HRP-conjugated Goat anti-Rabbit IgG (H+L) (AS014) at 1:10000 dilution.

Lysates/proteins: 25µg per lane.

Blocking buffer: 3% nonfat dry milk in TBST.

Detection: ECL Basic Kit (RM00020).

Exposure time: 3min.



Immunofluorescence analysis of HeLa cells using STAT6 Rabbit mAb (A19120) at dilution of 1:100 (40x lens). Secondary antibody: Cy3-conjugated Goat anti-Rabbit IgG (H+L) (AS007) at 1:500 dilution. Blue: DAPI for nuclear staining.