

A19123

Leader in Biomolecular Solutions for Life Science



TDP-43/TARDBP Rabbit mAb

Catalog No.: A19123

Recombinant

1 Publications

Basic Information

Observed MW

35kDa/45kDa

Calculated MW

45kDa

Category

SMab Recombinant Monoclonal
Antibody

Applications

WB,IHC-P,IF/ICC,IP,ChIP,ELISA

Cross-Reactivity

Human,Mouse,Rat

CloneNo number

ARC0492

Background

HIV-1, the causative agent of acquired immunodeficiency syndrome (AIDS), contains an RNA genome that produces a chromosomally integrated DNA during the replicative cycle. Activation of HIV-1 gene expression by the transactivator Tat is dependent on an RNA regulatory element (TAR) located downstream of the transcription initiation site. The protein encoded by this gene is a transcriptional repressor that binds to chromosomally integrated TAR DNA and represses HIV-1 transcription. In addition, this protein regulates alternate splicing of the CFTR gene. A similar pseudogene is present on chromosome 20.

Recommended Dilutions

WB 1:1000 - 1:6000

IHC-P 1:200 - 1:2000

IF/ICC 1:200 - 1:2000

IP 0.5µg-4µg antibody for
400µg-600µg extracts
of whole cells

ELISA Recommended starting
concentration is 1
µg/mL. Please optimize
the concentration
based on your specific
assay requirements.

ChIP 5µg antibody for
10µg-15µg of
Chromatin

Immunogen Information

Gene ID

23435

Swiss Prot

Q13148

Immunogen

A synthetic peptide corresponding to a sequence within amino acids 300-400 of human TDP-43/TARDB (Q13148).

Synonyms

ALS10; TDP-43; TDP-43/TARDBP

Product Information

Source

Rabbit

Isotype

IgG

Purification

Affinity purification

Storage

Store at -20°C. Avoid freeze / thaw cycles.

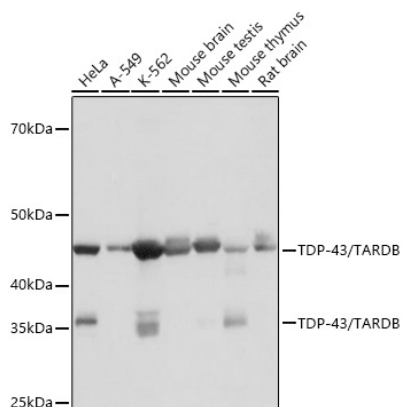
Buffer: PBS with 0.02% sodium azide,0.05% BSA,50% glycerol,pH7.3.

Contact



www.abclonal.com

Validation Data



Western blot analysis of various lysates using TDP-43/TARDBP Rabbit mAb (A19123) at 1:1000 dilution.

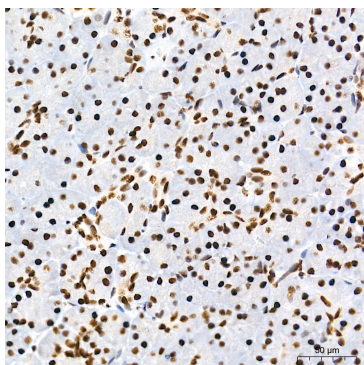
Secondary antibody: HRP-conjugated Goat anti-Rabbit IgG (H+L) (AS014) at 1:10000 dilution.

Lysates/proteins: 25µg per lane.

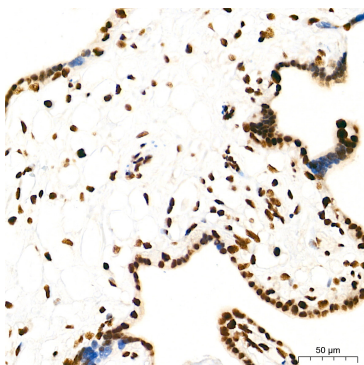
Blocking buffer: 3% nonfat dry milk in TBST.

Detection: ECL Basic Kit (RM00020).

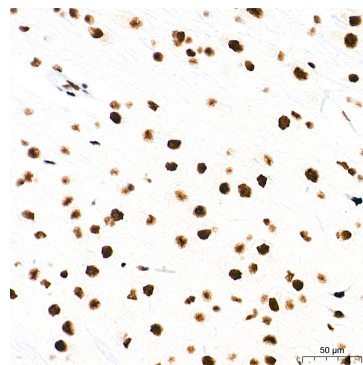
Exposure time: 10s.



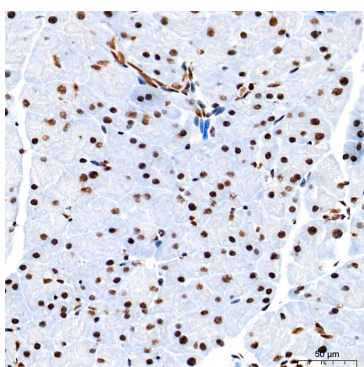
Immunohistochemistry analysis of paraffin-embedded Human pancreas tissue using TDP-43/TARDBP Rabbit mAb (A19123) at a dilution of 1:500 (40x lens). High pressure antigen retrieval performed with 0.01M Tris-EDTA Buffer (pH 9.0) prior to IHC staining.



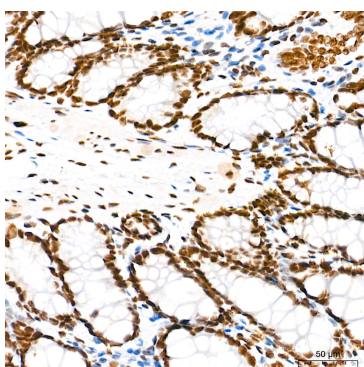
Immunohistochemistry analysis of paraffin-embedded Human placenta tissue using TDP-43/TARDBP Rabbit mAb (A19123) at a dilution of 1:500 (40x lens). High pressure antigen retrieval performed with 0.01M Tris-EDTA Buffer (pH 9.0) prior to IHC staining.



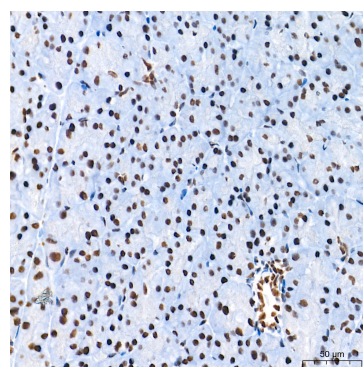
Immunohistochemistry analysis of paraffin-embedded Mouse brain tissue using TDP-43/TARDBP Rabbit mAb (A19123) at a dilution of 1:500 (40x lens). High pressure antigen retrieval performed with 0.01M Tris-EDTA Buffer (pH 9.0) prior to IHC staining.



Immunohistochemistry analysis of paraffin-embedded Mouse pancreas tissue using TDP-43/TARDBP Rabbit mAb (A19123) at a dilution of 1:500 (40x lens). High pressure antigen retrieval performed with 0.01M Tris-EDTA Buffer (pH 9.0) prior to IHC staining.

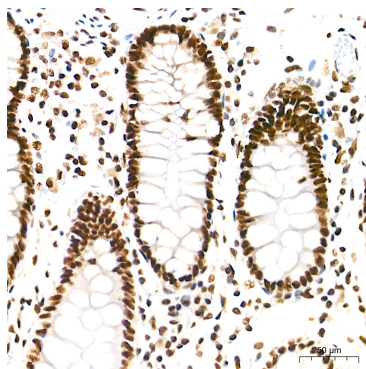


Immunohistochemistry analysis of paraffin-embedded Rat colon tissue using TDP-43/TARDBP Rabbit mAb (A19123) at a dilution of 1:500 (40x lens). High pressure antigen retrieval performed with 0.01M Tris-EDTA Buffer (pH 9.0) prior to IHC staining.

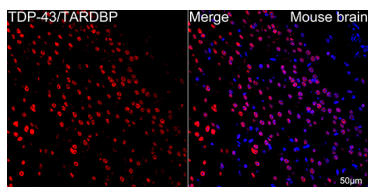


Immunohistochemistry analysis of paraffin-embedded Rat pancreas tissue using TDP-43/TARDBP Rabbit mAb (A19123) at a dilution of 1:500 (40x lens). High pressure antigen retrieval performed with 0.01M Tris-EDTA Buffer (pH 9.0) prior to IHC staining.

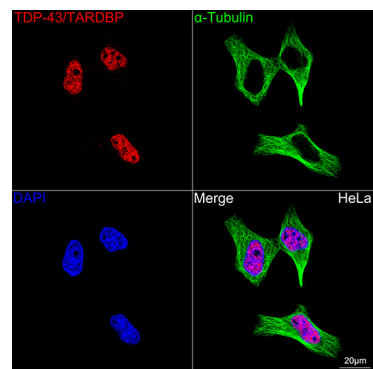
Validation Data



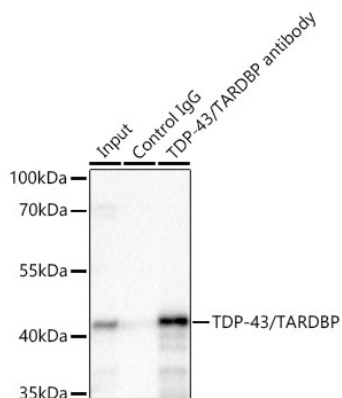
Immunohistochemistry analysis of paraffin-embedded Human colon tissue using TDP-43/TARDBP Rabbit mAb (A19123) at a dilution of 1:500 (40x lens). High pressure antigen retrieval performed with 0.01M Tris-EDTA Buffer (pH 9.0) prior to IHC staining.



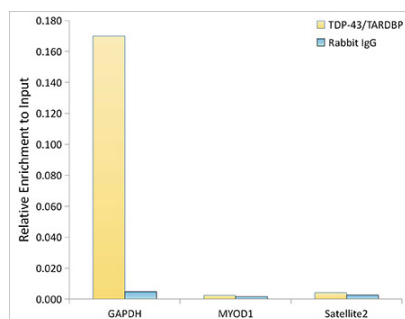
Confocal imaging of paraffin-embedded Mouse brain tissue using TDP-43/TARDBP Rabbit mAb (A19123, dilution 1:200) followed by a further incubation with Cy3 Goat Anti-Rabbit IgG (H+L) (AS007, dilution 1:500) (Red). DAPI was used for nuclear staining (Blue). Objective: 40x. Perform microwave antigen retrieval with 0.01 M citrate buffer (pH 6.0) prior to IF staining.



Confocal imaging of HeLa cells using TDP-43/TARDBP Rabbit mAb (A19123, dilution 1:200) followed by a further incubation with Cy3 Goat Anti-Rabbit IgG (H+L) (AS007, dilution 1:500) (Red). The cells were counterstained with α -Tubulin Mouse mAb (AC012, dilution 1:400) followed by incubation with ABflo® 488-conjugated Goat Anti-Mouse IgG (H+L) Ab (AS076, dilution 1:500) (Green). DAPI was used for nuclear staining (Blue). Objective: 100x.



Immunoprecipitation of TDP-43/TARDBP from 500 μ g extracts of K-562 cells was performed using 2 μ g of TDP-43/TARDBP Rabbit mAb (A19123). Rabbit IgG isotype control (AC042) was used to precipitate the Control IgG sample. IP samples were eluted with 1X non-reducing Laemmli Buffer. The Input lane represents 10% of the total input. Western blot analysis of immunoprecipitates was conducted using TDP-43/TARDBP Rabbit mAb (A19123) at a dilution of 1:500.



Chromatin immunoprecipitation analysis of extracts of K562 cells, using TDP-43/TARDBP Rabbit mAb (A19123) and rabbit IgG. The amount of immunoprecipitated DNA was checked by quantitative PCR. Histogram was constructed by the ratios of the immunoprecipitated DNA to the input.