

A19221

Leader in Biomolecular Solutions for Life Science



# Glycerol kinase (GK) Rabbit mAb

Catalog No.: A19221

Recombinant

## Basic Information

### Observed MW

61kDa

### Calculated MW

61kDa

### Category

SMab Recombinant Monoclonal  
Antibody

### Applications

WB,IHC-P,ELISA

### Cross-Reactivity

Human,Mouse,Rat

### CloneNo number

ARC2376

## Background

The protein encoded by this gene belongs to the FGGY kinase family. This protein is a key enzyme in the regulation of glycerol uptake and metabolism. It catalyzes the phosphorylation of glycerol by ATP, yielding ADP and glycerol-3-phosphate. Mutations in this gene are associated with glycerol kinase deficiency (GKD). Alternatively spliced transcript variants encoding different isoforms have been found for this gene.

## Recommended Dilutions

WB 1:500 - 1:1000

IHC-P 1:50 - 1:200

## Immunogen Information

### Gene ID

2710

### Swiss Prot

P32189

### Immunogen

A synthetic peptide corresponding to a sequence within amino acids 450-559 of human Glycerol kinase (GK) (P32189).

### Synonyms

GK1; GKD; Glycerol kinase (GK)

## Contact

 [www.abclonal.com](http://www.abclonal.com)

## Product Information

### Source

Rabbit

### Isotype

IgG

### Purification

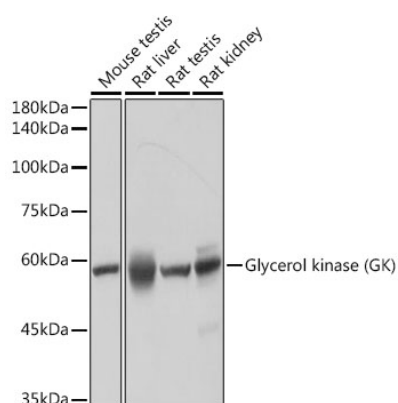
Affinity purification

### Storage

Store at -20°C. Avoid freeze / thaw cycles.

Buffer: PBS with 0.02% sodium azide,0.05% BSA,50% glycerol,pH7.3.

## Validation Data



Western blot analysis of various lysates using Glycerol kinase (GK) Rabbit mAb (A19221) at 1:1000 dilution.

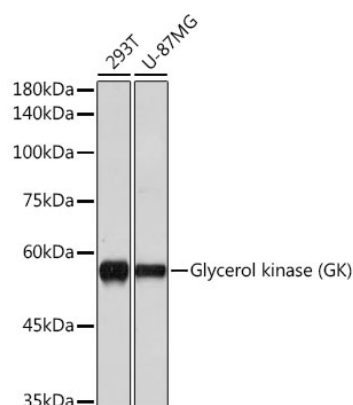
Secondary antibody: HRP Goat Anti-Rabbit IgG (H+L) (AS014) at 1:10000 dilution.

Lysates/proteins: 25µg per lane.

Blocking buffer: 3% nonfat dry milk in TBST.

Detection: ECL Basic Kit (RM00020).

Exposure time: 10s.



Western blot analysis of various lysates using Glycerol kinase (GK) Rabbit mAb (A19221) at 1:1000 dilution.

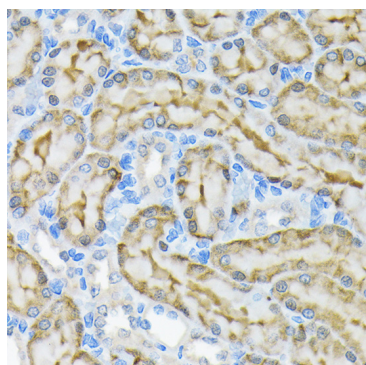
Secondary antibody: HRP Goat Anti-Rabbit IgG (H+L) (AS014) at 1:10000 dilution.

Lysates/proteins: 25µg per lane.

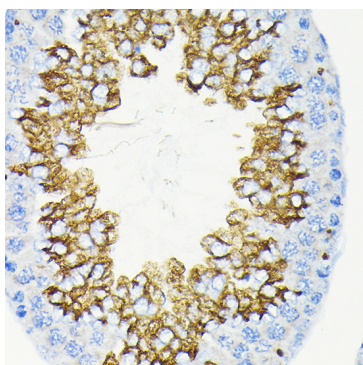
Blocking buffer: 3% nonfat dry milk in TBST.

Detection: ECL Basic Kit (RM00020).

Exposure time: 60s.



Immunohistochemistry analysis of paraffin-embedded rat kidney using Glycerol kinase (GK) Rabbit mAb (A19221) at dilution of 1:100 (40x lens). Perform microwave antigen retrieval with 10 mM Tris/EDTA buffer pH 9.0 before commencing with IHC staining protocol.



Immunohistochemistry analysis of paraffin-embedded mouse testis using Glycerol kinase (GK) Rabbit mAb (A19221) at dilution of 1:100 (40x lens). Perform microwave antigen retrieval with 10 mM Tris/EDTA buffer pH 9.0 before commencing with IHC staining protocol.