

A19239

Leader in Biomolecular Solutions for Life Science



## P4HB Rabbit mAb

Catalog No.: A19239

Recombinant

5 Publications

### Basic Information

#### Observed MW

57kDa

#### Calculated MW

57kDa

#### Category

SMab Recombinant Monoclonal  
Antibody

#### Applications

WB,IHC-P,ELISA

#### Cross-Reactivity

Human,Mouse,Rat

#### CloneNo number

ARC2398

### Background

This gene encodes the beta subunit of prolyl 4-hydroxylase, a highly abundant multifunctional enzyme that belongs to the protein disulfide isomerase family. When present as a tetramer consisting of two alpha and two beta subunits, this enzyme is involved in hydroxylation of prolyl residues in procollagen. This enzyme is also a disulfide isomerase containing two thioredoxin domains that catalyze the formation, breakage and rearrangement of disulfide bonds. Other known functions include its ability to act as a chaperone that inhibits aggregation of misfolded proteins in a concentration-dependent manner, its ability to bind thyroid hormone, its role in both the influx and efflux of S-nitrosothiol-bound nitric oxide, and its function as a subunit of the microsomal triglyceride transfer protein complex.

### Recommended Dilutions

WB 1:500 - 1:1000

IHC-P 1:50 - 1:200

ELISA Recommended starting concentration is 1 µg/mL. Please optimize the concentration based on your specific assay requirements.

### Immunogen Information

#### Gene ID

5034

#### Swiss Prot

P07237

#### Immunogen

A synthetic peptide corresponding to a sequence within amino acids 409-508 of human P4HB (P07237).

#### Synonyms

DSI; GIT; PDI; PHDB; PDIA1; PO4DB; PO4HB; PROHB; CLCRP1; ERBA2L; P4Hbeta; P4HB

### Contact

 [www.abclonal.com](http://www.abclonal.com)

### Product Information

#### Source

Rabbit

#### Isotype

IgG

#### Purification

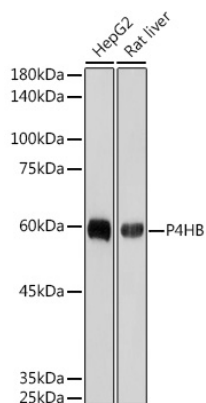
Affinity purification

#### Storage

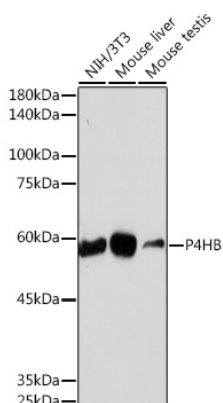
Store at -20°C. Avoid freeze / thaw cycles.

Buffer: PBS with 0.02% sodium azide,0.05% BSA,50% glycerol,pH7.3.

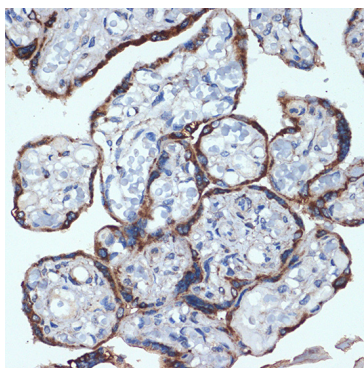
## Validation Data



Western blot analysis of various lysates using P4HB Rabbit mAb (A19239) at 1:1000 dilution.  
Secondary antibody: HRP-conjugated Goat anti-Rabbit IgG (H+L) (AS014) at 1:10000 dilution.  
Lysates/proteins: 25µg per lane.  
Blocking buffer: 3% nonfat dry milk in TBST.  
Detection: ECL Basic Kit (RM00020).  
Exposure time: 3s.



Western blot analysis of various lysates using P4HB Rabbit mAb (A19239) at 1:1000 dilution.  
Secondary antibody: HRP-conjugated Goat anti-Rabbit IgG (H+L) (AS014) at 1:10000 dilution.  
Lysates/proteins: 25µg per lane.  
Blocking buffer: 3% nonfat dry milk in TBST.  
Detection: ECL Basic Kit (RM00020).  
Exposure time: 180s.



Immunohistochemistry analysis of paraffin-embedded Human placenta using P4HB Rabbit mAb (A19239) at dilution of 1:100 (40x lens).  
Microwave antigen retrieval performed with 0.01M Tris/EDTA Buffer (pH 9.0) prior to IHC staining.