

A19255

Leader in Biomolecular Solutions for Life Science



## ANPRB/NPR2 Rabbit mAb

Catalog No.: A19255

Recombinant

3 Publications

### Basic Information

#### Observed MW

117kDa

#### Calculated MW

117kDa

#### Category

SMab Recombinant Monoclonal  
Antibody

#### Applications

WB,ELISA

#### Cross-Reactivity

Mouse

#### CloneNo number

ARC2421

### Background

This gene encodes natriuretic peptide receptor B, one of two integral membrane receptors for natriuretic peptides. Both NPR1 and NPR2 contain five functional domains: an extracellular ligand-binding domain, a single membrane-spanning region, and intracellularly a protein kinase homology domain, a helical hinge region involved in oligomerization, and a carboxyl-terminal guanylyl cyclase catalytic domain. The protein is the primary receptor for C-type natriuretic peptide (CNP), which upon ligand binding exhibits greatly increased guanylyl cyclase activity. Mutations in this gene are the cause of acromesomelic dysplasia Maroteaux type.

### Recommended Dilutions

**WB** 1:500 - 1:1000

**ELISA** Recommended starting concentration is 1 µg/mL. Please optimize the concentration based on your specific assay requirements.

### Immunogen Information

#### Gene ID

4882

#### Swiss Prot

P20594

#### Immunogen

A synthetic peptide corresponding to a sequence within amino acids 800-900 of human ANPRB/NRP2 (P20594).

#### Synonyms

GCB; AMD1; AMDM; ANPb; ECDM; GC-B; NPRB; SNSK; ANPRB; GUC2B; NPRBi; GUCY2B; ANPRB/NRP2

### Contact

 [www.abclonal.com](http://www.abclonal.com)

### Product Information

#### Source

Rabbit

#### Isotype

IgG

#### Purification

Affinity purification

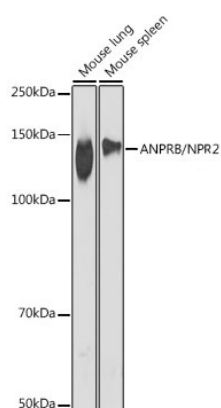
#### Storage

Store at -20°C. Avoid freeze / thaw cycles.

Buffer: PBS with 0.02% sodium azide, 0.05% BSA, 50% glycerol, pH7.3.

## Validation Data

---



Western blot analysis of various lysates using ANPRB/NPR2 Rabbit mAb (A19255) at 1:1000 dilution.

Secondary antibody: HRP-conjugated Goat anti-Rabbit IgG (H+L) (AS014) at 1:10000 dilution.

Lysates/proteins: 25µg per lane.

Blocking buffer: 3% nonfat dry milk in TBST.

Detection: ECL Basic Kit (RM00020).

Exposure time: 90s.