

A19265

Leader in Biomolecular Solutions for Life Science



# LHX2 Rabbit mAb

Catalog No.: A19265

Recombinant

## Basic Information

### Observed MW

44kDa

### Calculated MW

44kDa

### Category

SMab Recombinant Monoclonal  
Antibody

### Applications

WB,ELISA

### Cross-Reactivity

Human,Mouse,Rat

### CloneNo number

ARC2435

## Background

This gene encodes a protein belonging to a large protein family, members of which carry the LIM domain, a unique cysteine-rich zinc-binding domain. The encoded protein may function as a transcriptional regulator. The protein can recapitulate or rescue phenotypes in Drosophila caused by a related protein, suggesting conservation of function during evolution.

## Recommended Dilutions

WB 1:500 - 1:1000

## Immunogen Information

### Gene ID

9355

### Swiss Prot

P50458

### Immunogen

A synthetic peptide corresponding to a sequence within amino acids 1-100 of human LHX2 (P50458).

### Synonyms

LH2; hLhx2; LHX2

## Contact

 [www.abclonal.com](http://www.abclonal.com)

## Product Information

### Source

Rabbit

### Isotype

IgG

### Purification

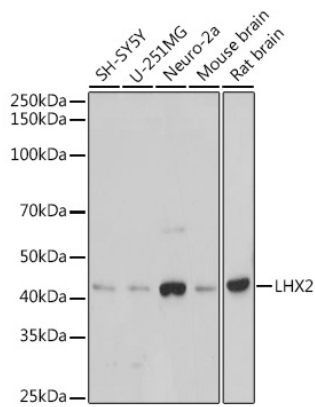
Affinity purification

### Storage

Store at -20°C. Avoid freeze / thaw cycles.

Buffer: PBS with 0.02% sodium azide,0.05% BSA,50% glycerol,pH7.3.

## Validation Data



Western blot analysis of extracts of various cell lines, using LHX2 antibody (A19265) at 1:1000 dilution.

Secondary antibody: HRP Goat Anti-Rabbit IgG (H+L) (AS014) at 1:10000 dilution.

Lysates/proteins: 25µg per lane.

Blocking buffer: 3% nonfat dry milk in TBST.

Detection: ECL Basic Kit (RM00020).

Exposure time: 90s.