

A19315

Leader in Biomolecular Solutions for Life Science



GTF2F1 Rabbit pAb

Catalog No.: A19315

Basic Information

Observed MW

74kDa

Calculated MW

58kDa

Category

Polyclonal Antibody

Applications

WB,ELISA

Cross-Reactivity

Human,Mouse,Rat

Background

Enables several functions, including RNA polymerase II general transcription initiation factor activity; phosphatase activator activity; and promoter-specific chromatin binding activity. Involved in several processes, including positive regulation of transcription by RNA polymerase II; response to virus; and transcription initiation from RNA polymerase II promoter. Located in cell junction and nucleoplasm. Part of transcription factor TFIID complex.

Recommended Dilutions

WB 1:500 - 1:2000

ELISA Recommended starting concentration is 1 µg/mL. Please optimize the concentration based on your specific assay requirements.

Immunogen Information

Gene ID

2962

Swiss Prot

P35269

Immunogen

Recombinant protein (or fragment). This information is considered to be commercially sensitive.

Synonyms

BTF4; RAP74; TF2F1; TFIIF; GTF2F1

Contact



www.abclonal.com

Product Information

Source

Rabbit

Isotype

IgG

Purification

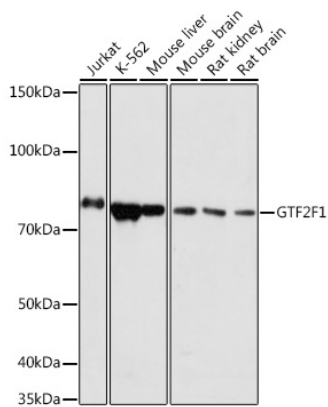
Affinity purification

Storage

Store at -20°C. Avoid freeze / thaw cycles.

Buffer: PBS with 0.01% thimerosal, 50% glycerol, pH7.3.

Validation Data



Western blot analysis of various lysates using GTF2F1 Rabbit pAb (A19315) at 1:1000 dilution.
Secondary antibody: HRP-conjugated Goat anti-Rabbit IgG (H+L) (AS014) at 1:10000 dilution.
Lysates/proteins: 25µg per lane.
Blocking buffer: 3% nonfat dry milk in TBST.
Detection: ECL Basic Kit (RM00020).
Exposure time: 1s.