

A1946

Leader in Biomolecular Solutions for Life Science



Glypican 3 (GPC3) Rabbit pAb

Catalog No.: A1946

Basic Information

Observed MW

66kDa

Calculated MW

66kDa

Category

Polyclonal Antibody

Applications

WB,IF/ICC,FC,ELISA

Cross-Reactivity

Human,Mouse,Rat

Background

Cell surface heparan sulfate proteoglycans are composed of a membrane-associated protein core substituted with a variable number of heparan sulfate chains. Members of the glypican-related integral membrane proteoglycan family (GRIPS) contain a core protein anchored to the cytoplasmic membrane via a glycosyl phosphatidylinositol linkage. These proteins may play a role in the control of cell division and growth regulation. The protein encoded by this gene can bind to and inhibit the dipeptidyl peptidase activity of CD26, and it can induce apoptosis in certain cell types. Deletion mutations in this gene are associated with Simpson-Golabi-Behmel syndrome, also known as Simpson dysmorphism syndrome. Alternative splicing results in multiple transcript variants.

Recommended Dilutions

WB 1:500 - 1:1000

IF/ICC 1:50 - 1:200

FC 1:50 - 1:200

ELISA Recommended starting concentration is 1 µg/mL. Please optimize the concentration based on your specific assay requirements.

Immunogen Information

Gene ID

2719

Swiss Prot

P51654

Immunogen

Synthetic peptide. This information is considered to be commercially sensitive.

Synonyms

SGB; DGSX; MXR7; SDYS; SGBS; OCI-5; SGBS1; GTR2-2; Glypican 3 (GPC3)

Product Information

Source

Rabbit

Isotype

IgG

Purification

Affinity purification

Storage

Store at -20°C. Avoid freeze / thaw cycles.

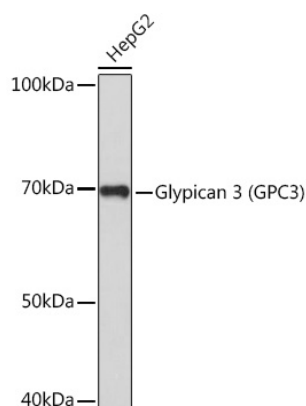
Buffer: PBS containing 50% glycerol, preserved with proclin300 or sodium azide (as specified on the Certificate of Analysis), pH 7.3.

Contact

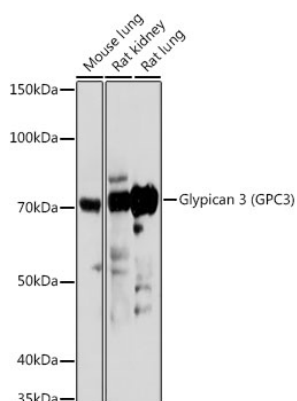


www.abclonal.com

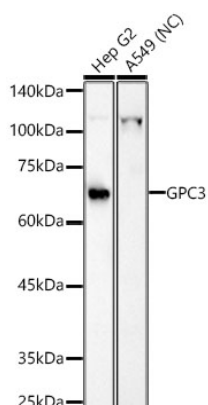
Validation Data



Western blot analysis of lysates from HepG2 cells, using Glypican 3 (Glypican 3 (GPC3)) Rabbit pAb (A1946) at 1:1000 dilution.
Secondary antibody: HRP-conjugated Goat anti-Rabbit IgG (H+L) (AS014) at 1:10000 dilution.
Lysates/proteins: 25µg per lane.
Blocking buffer: 3% nonfat dry milk in TBST.
Detection: ECL Basic Kit (RM00020).
Exposure time: 3min.

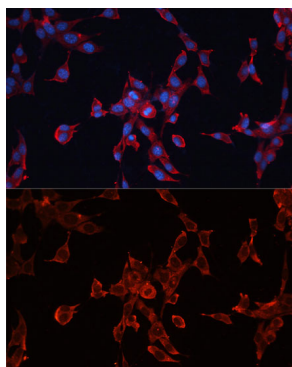


Western blot analysis of various lysates using Glypican 3 (GPC3) Rabbit pAb (A1946) at 1:1000 dilution.
Secondary antibody: HRP-conjugated Goat anti-Rabbit IgG (H+L) (AS014) at 1:10000 dilution.
Lysates/proteins: 25µg per lane.
Blocking buffer: 3% nonfat dry milk in TBST.
Detection: ECL Basic Kit (RM00020).
Exposure time: 180s.



Western blot analysis of various lysates, using Glypican 3 (GPC3) Rabbit pAb (A1946) at 1:800 dilution.
Secondary antibody: HRP-conjugated Goat anti-Rabbit IgG (H+L) (AS014) at 1:10000 dilution.
Lysates/proteins: 25µg per lane.
Blocking buffer: 3% nonfat dry milk in TBST.
Detection: ECL Basic Kit (RM00020).
Negative control (NC): A549
Exposure time: 90s.

Validation Data



Immunofluorescence analysis of NIH-3T3 cells using Glypican 3 (GPC3) Rabbit pAb (A1946) at dilution of 1:100 (40x lens). Secondary antibody: Cy3-conjugated Goat anti-Rabbit IgG (H+L) (AS007) at 1:500 dilution. Blue: DAPI for nuclear staining.