

A19551

Leader in Biomolecular Solutions for Life Science



RAR α Rabbit mAb

Catalog No.: A19551

Recombinant

2 Publications

Basic Information

Observed MW

60kDa

Calculated MW

51kDa

Category

SMab Recombinant Monoclonal
Antibody

Applications

WB,IHC-P,ELISA

Cross-Reactivity

Human,Mouse,Rat

CloneNo number

ARC0030

Background

This gene represents a nuclear retinoic acid receptor. The encoded protein, retinoic acid receptor alpha, regulates transcription in a ligand-dependent manner. This gene has been implicated in regulation of development, differentiation, apoptosis, granulopoiesis, and transcription of clock genes. Translocations between this locus and several other loci have been associated with acute promyelocytic leukemia. Alternatively spliced transcript variants have been found for this locus.

Recommended Dilutions

WB 1:1000 - 1:2000

IHC-P 1:100 - 1:500

ELISA Recommended starting concentration is 1 μ g/mL. Please optimize the concentration based on your specific assay requirements.

Immunogen Information

Gene ID

5914

Swiss Prot

P10276

Immunogen

A synthetic peptide corresponding to a sequence within amino acids 1-100 of human RAR α (P10276).

Synonyms

RAR; NR1B1; RARalpha; RAR α

Contact

 www.abclonal.com

Product Information

Source

Rabbit

Isotype

IgG

Purification

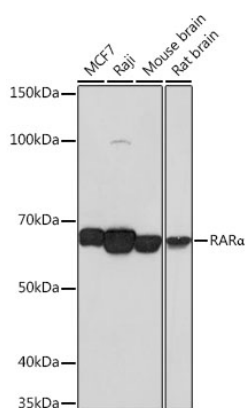
Affinity purification

Storage

Store at -20°C. Avoid freeze / thaw cycles.

Buffer: PBS with 0.02% sodium azide,0.05% BSA,50% glycerol,pH7.3.

Validation Data



Western blot analysis of various lysates using RARα Rabbit mAb (A19551) at 1:1000 dilution.

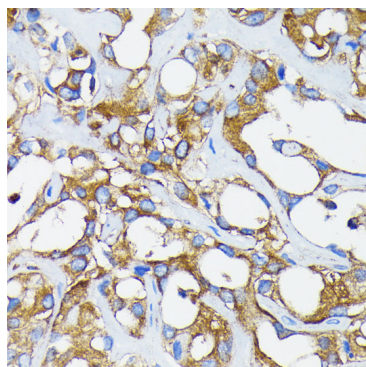
Secondary antibody: HRP-conjugated Goat anti-Rabbit IgG (H+L) (AS014) at 1:10000 dilution.

Lysates/proteins: 25μg per lane.

Blocking buffer: 3% nonfat dry milk in TBST.

Detection: ECL Basic Kit (RM00020).

Exposure time: 1min.



Immunohistochemistry analysis of paraffin-embedded Human breast cancer using RARα Rabbit mAb (A19551) at dilution of 1:100 (40x lens). Microwave antigen retrieval performed with 0.01M PBS Buffer (pH 7.2) prior to IHC staining.