

A19563

Leader in Biomolecular Solutions for Life Science



# STAT1 Rabbit mAb

Catalog No.: A19563

Recombinant

17 Publications

## Basic Information

### Observed MW

84kDa/91kDa

### Calculated MW

87kDa

### Category

SMab Recombinant Monoclonal  
Antibody

### Applications

WB,IP,ChIP-seq,ELISA

### Cross-Reactivity

Human,Mouse,Rat

### CloneNo number

ARC0042

## Background

The protein encoded by this gene is a member of the STAT protein family. In response to cytokines and growth factors, STAT family members are phosphorylated by the receptor associated kinases, and then form homo- or heterodimers that translocate to the cell nucleus where they act as transcription activators. The protein encoded by this gene can be activated by various ligands including interferon-alpha, interferon-gamma, EGF, PDGF and IL6. This protein mediates the expression of a variety of genes, which is thought to be important for cell viability in response to different cell stimuli and pathogens. The protein plays an important role in immune responses to viral, fungal and mycobacterial pathogens. Mutations in this gene are associated with Immunodeficiency 31B, 31A, and 31C.

## Recommended Dilutions

**WB** 1:10000 - 1:40000**IP** 0.5µg-4µg antibody for  
200µg-600µg extracts  
of whole cells**ELISA** Recommended starting  
concentration is 1  
µg/mL. Please optimize  
the concentration  
based on your specific  
assay requirements.**ChIP-seq** 1:50 - 1:200

## Contact

 [www.abclonal.com](http://www.abclonal.com)

## Immunogen Information

### Gene ID

6772

### Swiss Prot

P42224

### Immunogen

A synthetic peptide corresponding to a sequence within amino acids 1-100 of human STAT1 (P42224).

### Synonyms

CANDF7; IMD31A; IMD31B; IMD31C; ISGF-3; STAT91; STAT1

## Product Information

### Source

Rabbit

### Isotype

IgG

### Purification

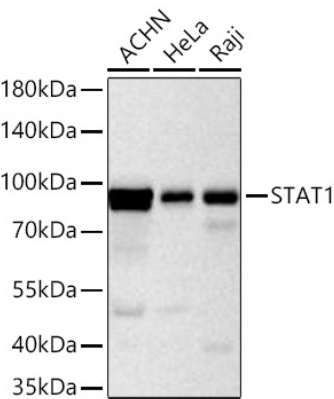
Affinity purification

### Storage

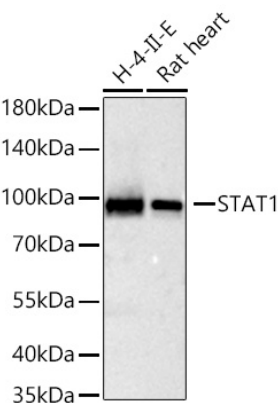
Store at -20°C. Avoid freeze / thaw cycles.

Buffer: PBS with 0.02% sodium azide,0.05% BSA,50% glycerol,pH7.3.

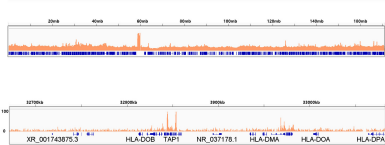
Validation Data



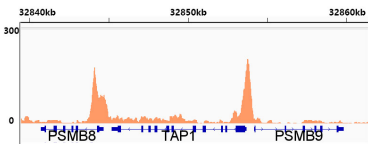
Western blot analysis of various lysates using STAT1 Rabbit mAb (A19563) at 1:20000 dilution incubated at room temperature for 1.5 hours.  
Secondary antibody: HRP-conjugated Goat anti-Rabbit IgG (H+L) (AS014) at 1:10000 dilution.  
Lysates/proteins: 25 µg per lane.  
Blocking buffer: 3% nonfat dry milk in TBST.  
Detection: ECL Basic Kit (RM00020).  
Exposure time: 20s.



Western blot analysis of various lysates using STAT1 Rabbit mAb (A19563) at 1:20000 dilution incubated at room temperature for 1.5 hours.  
Secondary antibody: HRP-conjugated Goat anti-Rabbit IgG (H+L) (AS014) at 1:10000 dilution.  
Lysates/proteins: 25 µg per lane.  
Blocking buffer: 3% nonfat dry milk in TBST.  
Detection: ECL Basic Kit (RM00020).  
Exposure time: 60s.



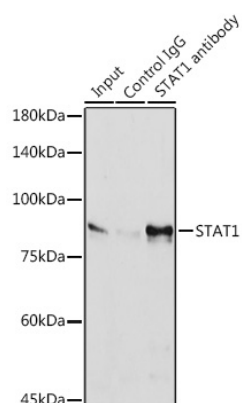
Chromatin immunoprecipitation was performed with 35 µg of cross-linked chromatin from HeLa cells treated by TNF-α (30ng/ml, 1h) using 5 µg of STAT1 Rabbit mAb (A19563). DNA libraries were prepared using Scale ssDNA-seq Lib Prep Kit for Illumina V2 (RK20228). The ChIP sequencing results indicate the enrichment pattern of STAT1 across chromosome 6 (upper panel) and the genomic region encompassing TAP1, a representative gene enriched in STAT1 (lower panel).



Chromatin immunoprecipitation was performed with 35 µg of cross-linked chromatin from HeLa cells treated by TNF-α (30ng/ml, 1h) using 5 µg of STAT1 Rabbit mAb (A19563). DNA libraries were prepared using Scale ssDNA-seq Lib Prep Kit for Illumina V2 (RK20228). The ChIP sequencing results indicate the enrichment pattern of STAT1 in the representative genomic region surrounding TAP1 gene.

## Validation Data

---



Immunoprecipitation analysis of 600 µg extracts of HeLa cells using 3 µg STAT1 antibody (A19563). Western blot was performed from the immunoprecipitate using STAT1 antibody (A19563) at a dilution of 1:1000.