

A19566

Leader in Biomolecular Solutions for Life Science



[KO Validated] STAT3 Rabbit mAb

Catalog No.: A19566

KO Validated

Recombinant

30 Publications

Basic Information

Observed MW

79kDa/88kDa

Calculated MW

88kDa

Category

SMab Recombinant Monoclonal
Antibody

Applications

WB, ELISA

Cross-Reactivity

Human, Mouse

CloneNo number

ARC2603

Background

The protein encoded by this gene is a member of the STAT protein family. In response to cytokines and growth factors, STAT family members are phosphorylated by the receptor associated kinases, and then form homo- or heterodimers that translocate to the cell nucleus where they act as transcription activators. This protein is activated through phosphorylation in response to various cytokines and growth factors including IFNs, EGF, IL5, IL6, HGF, LIF and BMP2. This protein mediates the expression of a variety of genes in response to cell stimuli, and thus plays a key role in many cellular processes such as cell growth and apoptosis. The small GTPase Rac1 has been shown to bind and regulate the activity of this protein. PIAS3 protein is a specific inhibitor of this protein. This gene also plays a role in regulating host response to viral and bacterial infections. Mutations in this gene are associated with infantile-onset multisystem autoimmune disease and hyper-immunoglobulin E syndrome.

Recommended Dilutions

WB 1:1000 - 1:6000

ELISA Recommended starting concentration is 1 µg/mL. Please optimize the concentration based on your specific assay requirements.

Immunogen Information

Gene ID

6774

Swiss Prot

P40763

Immunogen

A synthetic peptide corresponding to a sequence within amino acids 600-700 of human STAT3 (P40763).

Synonyms

APRF; HIES; ADMIO; ADMIO1; T3

Contact

 www.abclonal.com

Product Information

Source

Rabbit

Isotype

IgG

Purification

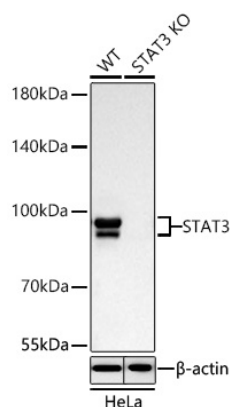
Affinity purification

Storage

Store at -20°C. Avoid freeze / thaw cycles.

Buffer: PBS with 0.09% sodium azide, 0.05% BSA, 50% glycerol, pH7.3.

Validation Data



Western blot analysis of lysates from wild type (WT) and STAT3 knockout (KO) HeLa cells using [KO Validated] STAT3 Rabbit mAb (A19566) at 1:3000 dilution incubated overnight at 4°C.

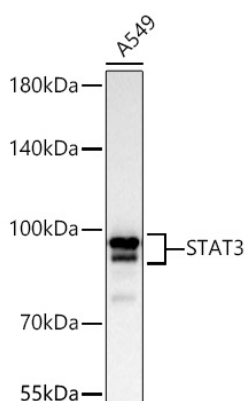
Secondary antibody: HRP-conjugated Goat anti-Rabbit IgG (H+L) (AS014) at 1:10000 dilution.

Lysates/proteins: 25 µg per lane.

Blocking buffer: 3% nonfat dry milk in TBST.

Detection: ECL Basic Kit (RM00020).

Exposure time: 30s.



Western blot analysis of lysates from A549 cells using [KO Validated] STAT3 Rabbit mAb (A19566) at 1:3000 dilution incubated overnight at 4°C.

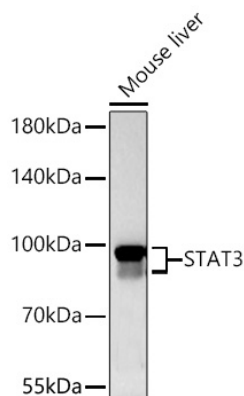
Secondary antibody: HRP-conjugated Goat anti-Rabbit IgG (H+L) (AS014) at 1:10000 dilution.

Lysates/proteins: 25 µg per lane.

Blocking buffer: 3% nonfat dry milk in TBST.

Detection: ECL Basic Kit (RM00020).

Exposure time: 30s.



Western blot analysis of lysates from Mouse liver using [KO Validated] STAT3 Rabbit mAb (A19566) at 1:3000 dilution incubated overnight at 4°C.

Secondary antibody: HRP-conjugated Goat anti-Rabbit IgG (H+L) (AS014) at 1:10000 dilution.

Lysates/proteins: 25 µg per lane.

Blocking buffer: 3% nonfat dry milk in TBST.

Detection: ECL Basic Kit (RM00020).

Exposure time: 60s.