

A19590

Leader in Biomolecular Solutions for Life Science



LHX3 Rabbit mAb

Catalog No.: A19590

Recombinant

Basic Information

Observed MW

43kDa

Calculated MW

43kDa

Category

SMab Recombinant Monoclonal
Antibody

Applications

WB,ELISA

Cross-Reactivity

Human,Mouse,Rat

CloneNo number

ARC2150

Background

This gene encodes a member of a large family of proteins which carry the LIM domain, a unique cysteine-rich zinc-binding domain. The encoded protein is a transcription factor that is required for pituitary development and motor neuron specification. Mutations in this gene cause combined pituitary hormone deficiency 3. Alternative splicing results in multiple transcript variants encoding different isoforms.

Recommended Dilutions

WB 1:500 - 1:2000

Immunogen Information

Gene ID

8022

Swiss Prot

Q9UBR4

Immunogen

A synthetic peptide corresponding to a sequence within amino acids 250-350 of human LHX3 (Q9UBR4).

Synonyms

LIM3; CPHD3; M2-LHX3; LHX3

Contact

 www.abclonal.com

Product Information

Source

Rabbit

Isotype

IgG

Purification

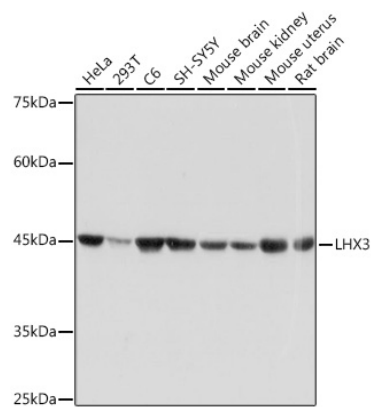
Affinity purification

Storage

Store at -20°C. Avoid freeze / thaw cycles.

Buffer: PBS with 0.02% sodium azide,0.05% BSA,50% glycerol,pH7.3.

Validation Data



Western blot analysis of extracts of various cell lines, using LHX3 Rabbit mAb (A19590) at 1:1000 dilution.
Secondary antibody: HRP Goat Anti-Rabbit IgG (H+L) (AS014) at 1:10000 dilution.
Lysates/proteins: 25µg per lane.
Blocking buffer: 3% nonfat dry milk in TBST.
Detection: ECL Basic Kit (RM00020).
Exposure time: 1s.