

A19604

Leader in Biomolecular Solutions for Life Science



[KD Validated] ATG7 Rabbit mAb

Catalog No.: A19604

Recombinant

11 Publications

Basic Information

Observed MW

78kDa

Calculated MW

78kDa

Category

SMab Recombinant Monoclonal
Antibody

Applications

WB,IHC-P,IP,ELISA

Cross-Reactivity

Human,Mouse,Rat

CloneNo number

ARC0083

Background

This gene encodes an E1-like activating enzyme that is essential for autophagy and cytoplasmic to vacuole transport. The encoded protein is also thought to modulate p53-dependent cell cycle pathways during prolonged metabolic stress. It has been associated with multiple functions, including axon membrane trafficking, axonal homeostasis, mitophagy, adipose differentiation, and hematopoietic stem cell maintenance. Alternative splicing results in multiple transcript variants.

Recommended Dilutions

WB 1:1000 - 1:6000

IHC-P 1:200 - 1:800

IP 0.5µg-4µg antibody for
200µg-400µg extracts
of whole cells

ELISA Recommended starting
concentration is 1
µg/mL. Please optimize
the concentration
based on your specific
assay requirements.

Immunogen Information

Gene ID
10533

Swiss Prot
O95352

Immunogen

A synthetic peptide corresponding to a sequence within amino acids 1-100 of human Atg7(Apg7) (O95352).

Synonyms

GSA7; [KD Validated] ATG7

Product Information

Source
Rabbit

Isotype
IgG

Purification
Affinity purification

Storage

Store at -20°C. Avoid freeze / thaw cycles.

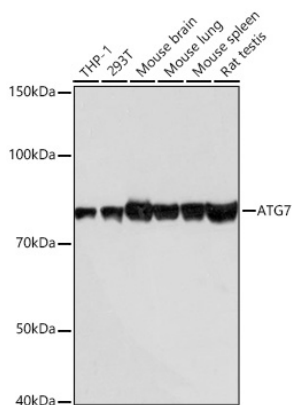
Buffer: PBS with 0.02% sodium azide,0.05% BSA,50% glycerol,pH7.3.

Contact



www.abclonal.com

Validation Data



Western blot analysis of various lysates using [KD Validated] ATG7 Rabbit mAb (A19604) at 1:1000 dilution incubated overnight at 4°C.

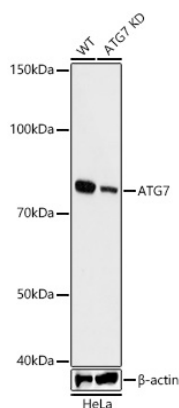
Secondary antibody: HRP-conjugated Goat anti-Rabbit IgG (H+L) (AS014) at 1:10000 dilution.

Lysates/proteins: 25µg per lane.

Blocking buffer: 3% nonfat dry milk in TBST.

Detection: ECL Basic Kit (RM00020).

Exposure time: 10s.



Western blot analysis of lysates from wild type (WT) and ATG7 knockdown (KD) HeLa cells using [KD Validated] ATG7 Rabbit mAb (A19604) at 1:1000 dilution incubated overnight at 4°C.

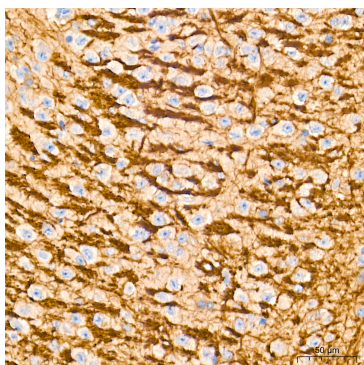
Secondary antibody: HRP-conjugated Goat anti-Rabbit IgG (H+L) (AS014) at 1:10000 dilution.

Lysates/proteins: 25µg per lane.

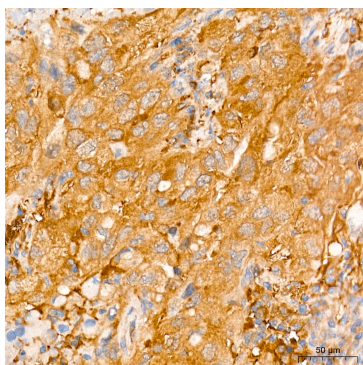
Blocking buffer: 3% nonfat dry milk in TBST.

Detection: ECL Basic Kit (RM00020).

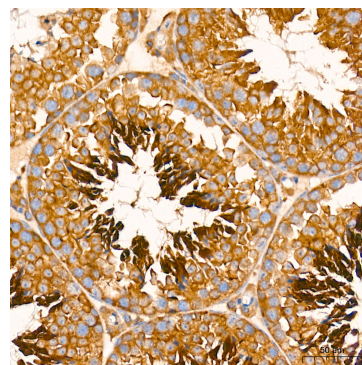
Exposure time: 60s.



Immunohistochemistry analysis of paraffin-embedded Mouse brain tissue using [KD Validated] ATG7 Rabbit mAb (A19604) at a dilution of 1:500 (40x lens). High pressure antigen retrieval performed with 0.01M Tris-EDTA Buffer (pH 9.0) prior to IHC staining.

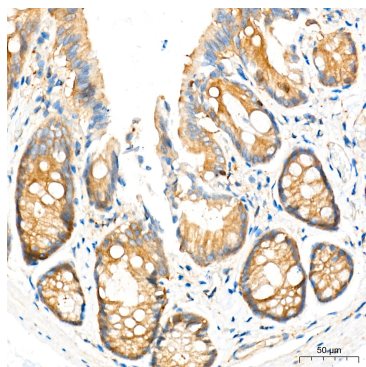


Immunohistochemistry analysis of paraffin-embedded Human lung cancer tissue using [KD Validated] ATG7 Rabbit mAb (A19604) at a dilution of 1:500 (40x lens). High pressure antigen retrieval performed with 0.01M Tris-EDTA Buffer (pH 9.0) prior to IHC staining.

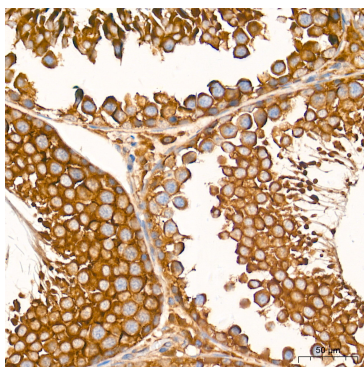


Immunohistochemistry analysis of paraffin-embedded Mouse testis tissue using [KD Validated] ATG7 Rabbit mAb (A19604) at a dilution of 1:500 (40x lens). High pressure antigen retrieval performed with 0.01M Tris-EDTA Buffer (pH 9.0) prior to IHC staining.

Validation Data



Immunohistochemistry analysis of paraffin-embedded Rat colon tissue using [KD Validated] ATG7 Rabbit mAb (A19604) at a dilution of 1:500 (40x lens). High pressure antigen retrieval performed with 0.01M Tris-EDTA Buffer (pH 9.0) prior to IHC staining.



Immunohistochemistry analysis of paraffin-embedded Rat testis tissue using [KD Validated] ATG7 Rabbit mAb (A19604) at a dilution of 1:500 (40x lens). High pressure antigen retrieval performed with 0.01M Tris-EDTA Buffer (pH 9.0) prior to IHC staining.