

A19612

Leader in Biomolecular Solutions for Life Science



Cleaved PARP1 p25 Rabbit mAb

Catalog No.: A19612

Recombinant

24 Publications

Basic Information

Observed MW

25kDa

Calculated MW

113kDa

Category

SMab Recombinant Monoclonal
Antibody

Applications

WB,IP,ELISA

Cross-Reactivity

Human,Mouse

CloneNo number

ARC0091

Background

This gene encodes a chromatin-associated enzyme, poly(ADP-ribosyl)transferase, which modifies various nuclear proteins by poly(ADP-ribosyl)ation. The modification is dependent on DNA and is involved in the regulation of various important cellular processes such as differentiation, proliferation, and tumor transformation and also in the regulation of the molecular events involved in the recovery of cell from DNA damage. In addition, this enzyme may be the site of mutation in Fanconi anemia, and may participate in the pathophysiology of type I diabetes.

Recommended Dilutions

WB	1:500 - 1:2000
IP	0.5µg-4µg antibody for 200µg-400µg extracts of whole cells
ELISA	Recommended starting concentration is 1 µg/mL. Please optimize the concentration based on your specific assay requirements.

Contact



www.abclonal.com

Immunogen Information

Gene ID
142

Swiss Prot
P09874

Immunogen

A synthetic peptide corresponding to a sequence within amino acids 150-214 of human Cleaved PARP1 p25 (P09874).

Synonyms

PARP; PARS; PPOL; ADPRT; ARTD1; ADPRT1; PARP-1; ADPRT 1; pADPRT-1; Poly-PARP; Cleaved PARP1 p25

Product Information

Source
Rabbit

Isotype
IgG

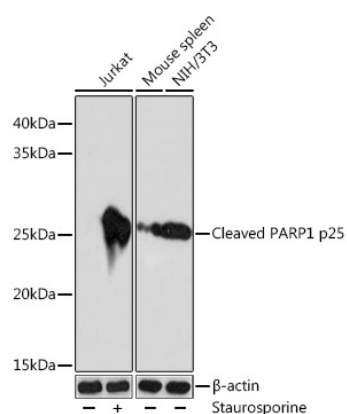
Purification
Affinity purification

Storage

Store at -20°C. Avoid freeze / thaw cycles.

Buffer: PBS with 0.02% sodium azide,0.05% BSA,50% glycerol,pH7.3.

Validation Data



Western blot analysis of various lysates using Cleaved PARP1 p25 Rabbit mAb (A19612) at 1:1000 dilution. Jurkat cells were treated with Staurosporine (1 μ M) at room temperature for 3 hours.

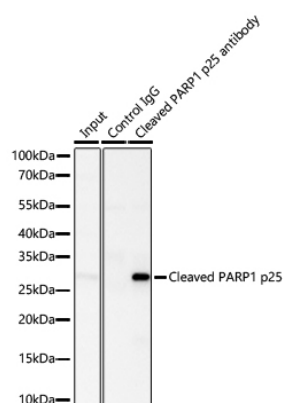
Secondary antibody: HRP-conjugated Goat anti-Rabbit IgG (H+L) (AS014) at 1:10000 dilution.

Lysates/proteins: 25 μ g per lane.

Blocking buffer: 3% nonfat dry milk in TBST.

Detection: ECL Basic Kit (RM00020).

Exposure time: 90s.



Immunoprecipitation of Cleaved PARP1 p25 from 600 μ g extracts of Jurkat cells was performed using 2 μ g of Cleaved PARP1 p25 Rabbit mAb (A19612). Rabbit IgG isotype control (AC005) was used to precipitate the Control IgG sample. IP samples were eluted with 1X reducing Laemmli Buffer. The Input lane represents 10% of the total input.

Western blot analysis of immunoprecipitates was conducted using Cleaved PARP1 p25 Rabbit mAb (A19612) at a dilution of 1:1000.