

A19616

Leader in Biomolecular Solutions for Life Science



## RAB9P40 Rabbit mAb

Catalog No.: A19616

Recombinant

1 Publications

### Basic Information

#### Observed MW

41kDa

#### Calculated MW

41kDa

#### Category

SMab Recombinant Monoclonal  
Antibody

#### Applications

WB,ELISA

#### Cross-Reactivity

Human,Mouse,Rat

#### CloneNo number

ARC2194

### Background

Predicted to be involved in receptor-mediated endocytosis and vesicle docking involved in exocytosis. Predicted to be located in cytoplasmic vesicle; cytosol; and trans-Golgi network membrane.

### Recommended Dilutions

WB 1:500 - 1:2000

### Immunogen Information

#### Gene ID

10244

#### Swiss Prot

Q7Z6M1

#### Immunogen

Recombinant fusion protein containing a sequence corresponding to amino acids 273-372 of human RAB9RAB9P40 (Q7Z6M1).

#### Synonyms

p40; RAB9P40; bA65N13.1

### Contact



[www.abclonal.com](http://www.abclonal.com)

### Product Information

#### Source

Rabbit

#### Isotype

IgG

#### Purification

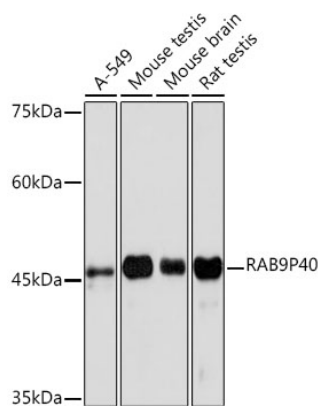
Affinity purification

#### Storage

Store at -20°C. Avoid freeze / thaw cycles.

Buffer: PBS with 0.02% sodium azide,0.05% BSA,50% glycerol,pH7.3.

## Validation Data



Western blot analysis of extracts of various cell lines, using RAB9RAB9P40 Rabbit mAb (A19616) at 1:1000 dilution.  
Secondary antibody: HRP Goat Anti-Rabbit IgG (H+L) (AS014) at 1:10000 dilution.  
Lysates/proteins: 25µg per lane.  
Blocking buffer: 3% nonfat dry milk in TBST.  
Detection: ECL Basic Kit (RM00020).  
Exposure time: 180s.