

A19645

Leader in Biomolecular Solutions for Life Science



MonoMethyl-Histone H3-R2 Rabbit mAb

Catalog No.: A19645

Recombinant

Basic Information

Observed MW

17kDa

Calculated MW

16kDa

Category

SMab Recombinant Monoclonal
Antibody

Applications

WB,ELISA,DB,CUT&Tag

Cross-Reactivity

Human,Mouse,Rat,Other (Wide Range
Predicted)

CloneNo number

ARC0124

Recommended Dilutions

WB 1:500 - 1:1000

DB 1:500 - 1:1000

ELISA Recommended starting
concentration is 1
µg/mL. Please optimize
the concentration
based on your specific
assay requirements.

CUT&Tag 10⁵ cells /1 µg

Contact



www.abclonal.com

Background

This gene encodes a member of the MAP kinase family. MAP kinases, also known as extracellular signal-regulated kinases (ERKs), act as an integration point for multiple biochemical signals, and are involved in a wide variety of cellular processes such as proliferation, differentiation, transcription regulation and development. The activation of this kinase requires its phosphorylation by upstream kinases. Upon activation, this kinase translocates to the nucleus of the stimulated cells, where it phosphorylates nuclear targets. One study also suggests that this protein acts as a transcriptional repressor independent of its kinase activity. The encoded protein has been identified as a moonlighting protein based on its ability to perform mechanistically distinct functions. Two alternatively spliced transcript variants encoding the same protein, but differing in the UTRs, have been reported for this gene.

Immunogen Information

Gene ID

8290/8350

Swiss Prot

Q16695/P68431

Immunogen

Synthetic peptide. This information is considered to be commercially sensitive.

Synonyms

H3/A; H3C2; H3C3; H3C4; H3C6; H3C7; H3C8; H3FA; H3C10; H3C11; H3C12; HIST1H3A;
MonoMethyl-Histone H3-R2

Product Information

Source

Rabbit

Isotype

IgG

Purification

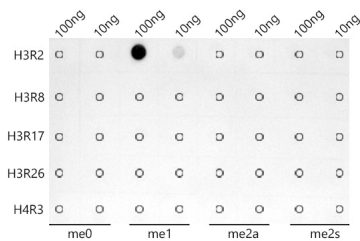
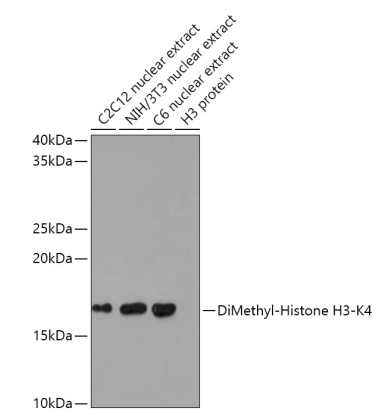
Affinity purification

Storage

Store at -20°C. Avoid freeze / thaw cycles.

Buffer: PBS with 0.02% sodium azide,0.05% BSA,50% glycerol,pH7.3.

Validation Data



Dot-blot analysis of all sorts of peptides using MonoMethyl-Histone H3-R2 antibody (A19645) at 1:1000 dilution.

CUT&Tag was performed using the CUT&Tag Assay Kit (pAG-Tn5) for Illumina(RK20265) from 10⁵ K562 cells with 1 µg MonoMethyl-Histone H3-R2 antibody (A19645), along with a Goat Anti-Rabbit IgG(H+L). The CUT&Tag results indicate the enrichment pattern of H3R2me1 in representative gene loci (MYOD1), as shown in figure.