

A19674

Leader in Biomolecular Solutions for Life Science



## PGC1 $\alpha/\beta$ Rabbit mAb

Catalog No.: A19674

Recombinant

13 Publications

### Basic Information

#### Observed MW

113kDa

#### Calculated MW

113kDa

#### Category

SMab Recombinant Monoclonal  
Antibody

#### Applications

WB,ELISA

#### Cross-Reactivity

Mouse,Rat

#### CloneNo number

ARC0153

### Background

The protein encoded by this gene is a transcriptional coactivator that regulates the genes involved in energy metabolism. This protein interacts with PPARgamma, which permits the interaction of this protein with multiple transcription factors. This protein can interact with, and regulate the activities of, cAMP response element binding protein (CREB) and nuclear respiratory factors (NRFs). It provides a direct link between external physiological stimuli and the regulation of mitochondrial biogenesis, and is a major factor that regulates muscle fiber type determination. This protein may be also involved in controlling blood pressure, regulating cellular cholesterol homoeostasis, and the development of obesity.

### Recommended Dilutions

WB 1:1000 - 1:6000

ELISA Recommended starting concentration is 1  $\mu$ g/mL. Please optimize the concentration based on your specific assay requirements.

### Immunogen Information

#### Gene ID

10891/133522

#### Swiss Prot

Q9UBK2/Q86YN6

#### Immunogen

A synthetic peptide corresponding to a sequence within amino acids 699-798 of human PGC1 $\alpha/\beta$  (NP\_037393.1).

#### Synonyms

LEM6; PGC-1(alpha); PGC-1alpha; PGC-1v; PGC1; PGC1A; PPARGC1; ERRL1; PERC; PGC-1(beta); PGC1B; PGC1 $\alpha/\beta$

### Contact

 [www.abclonal.com](http://www.abclonal.com)

### Product Information

#### Source

Rabbit

#### Isotype

IgG

#### Purification

Affinity purification

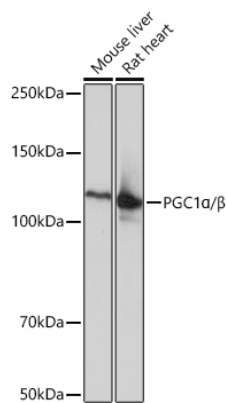
#### Storage

Store at -20°C. Avoid freeze / thaw cycles.

Buffer: PBS with 0.02% sodium azide,0.05% BSA,50% glycerol,pH7.3.

## Validation Data

---



Western blot analysis of various lysates using PGC1α/β Rabbit mAb (A19674) at 1:1000 dilution.

Secondary antibody: HRP-conjugated Goat anti-Rabbit IgG (H+L) (AS014) at 1:10000 dilution.

Lysates/proteins: 25μg per lane.

Blocking buffer: 3% nonfat dry milk in TBST.

Detection: ECL Basic Kit (RM00020).

Exposure time: 1s.