

A19677

Leader in Biomolecular Solutions for Life Science



## [KO Validated] ATG5 Rabbit mAb

Catalog No.: A19677

**KO Validated**

**Recombinant**

**27 Publications**

### Basic Information

#### Observed MW

55kDa

#### Calculated MW

32kDa

#### Category

SMab Recombinant Monoclonal  
Antibody

#### Applications

WB,IHC-P,IF/ICC,IP,ELISA

#### Cross-Reactivity

Human,Mouse,Rat

#### CloneNo number

ARC0156

### Recommended Dilutions

**WB** 1:1000 - 1:6000

**IF/ICC** 1:200 - 1:400

**IHC-P** 1:200 - 1:2000

**IP** 0.5µg-4µg antibody for  
200µg-400µg extracts  
of whole cells

**ELISA** Recommended starting  
concentration is 1  
µg/mL. Please optimize  
the concentration  
based on your specific  
assay requirements.

### Contact

 [www.abclonal.com](http://www.abclonal.com)

### Background

The protein encoded by this gene, in combination with autophagy protein 12, functions as an E1-like activating enzyme in a ubiquitin-like conjugating system. The encoded protein is involved in several cellular processes, including autophagic vesicle formation, mitochondrial quality control after oxidative damage, negative regulation of the innate antiviral immune response, lymphocyte development and proliferation, MHC II antigen presentation, adipocyte differentiation, and apoptosis. Several transcript variants encoding different protein isoforms have been found for this gene.

### Immunogen Information

#### Gene ID

9474

#### Swiss Prot

Q9H1Y0

#### Immunogen

A synthetic peptide corresponding to a sequence within amino acids 1-100 of human ATG5 (Q9H1Y0).

#### Synonyms

ASP; APG5; APG5L; hAPG5; SCAR25; APG5-LIKE; G5

### Product Information

#### Source

Rabbit

#### Isotype

IgG

#### Purification

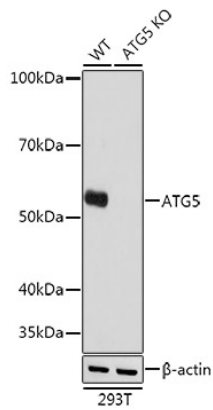
Affinity purification

#### Storage

Store at -20°C. Avoid freeze / thaw cycles.

Buffer: PBS with 0.09% Sodium azide,0.05% BSA,50% glycerol,pH7.3.

## Validation Data



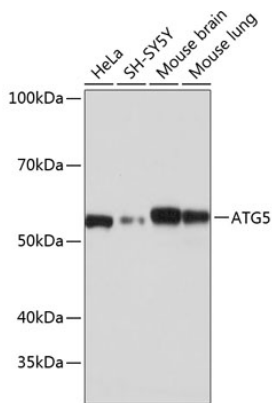
Western blot analysis of lysates from wild type (WT) and ATG5 knockout (KO) 293T cells, using [KO Validated] ATG5 Rabbit mAb (A19677) at 1:1000 dilution. Secondary antibody: HRP-conjugated Goat anti-Rabbit IgG (H+L) (AS014) at 1:10000 dilution.

Lysates/proteins: 25µg per lane.

Blocking buffer: 3% nonfat dry milk in TBST.

Detection: ECL Basic Kit (RM00020).

Exposure time: 1s.



Western blot analysis of various lysates using [KO Validated] ATG5 Rabbit mAb (A19677) at 1:1000 dilution.

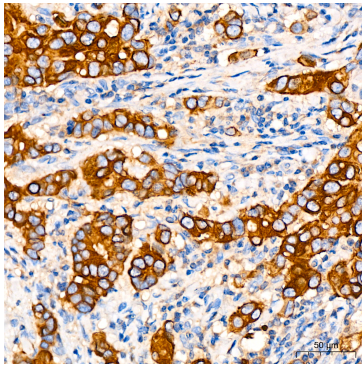
Secondary antibody: HRP-conjugated Goat anti-Rabbit IgG (H+L) (AS014) at 1:10000 dilution.

Lysates/proteins: 25µg per lane.

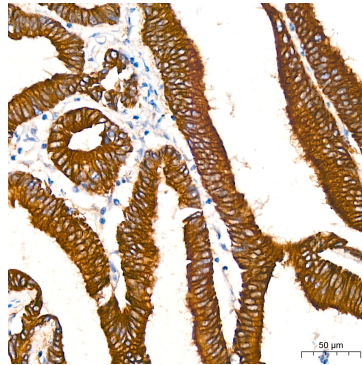
Blocking buffer: 3% nonfat dry milk in TBST.

Detection: ECL Basic Kit (RM00020).

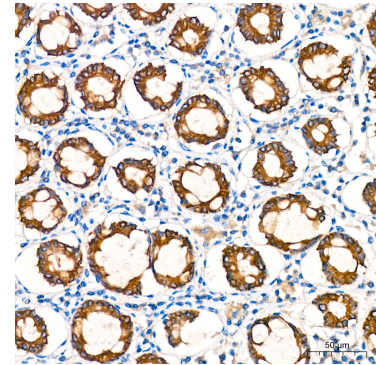
Exposure time: 1s.



Immunohistochemistry analysis of paraffin-embedded Human breast cancer tissue using [KO Validated] ATG5 Rabbit mAb (A19677) at a dilution of 1:200 (40x lens). High pressure antigen retrieval performed with 0.01M Citrate Buffer (pH 6.0) prior to IHC staining.

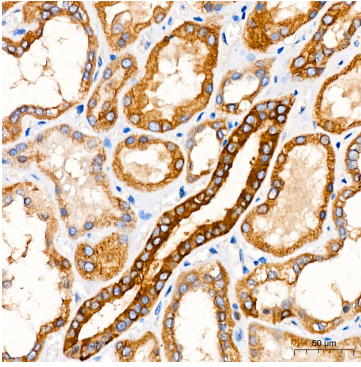


Immunohistochemistry analysis of paraffin-embedded Human colon carcinoma tissue using [KO Validated] ATG5 Rabbit mAb (A19677) at a dilution of 1:200 (40x lens). High pressure antigen retrieval performed with 0.01M Citrate Buffer (pH 6.0) prior to IHC staining.

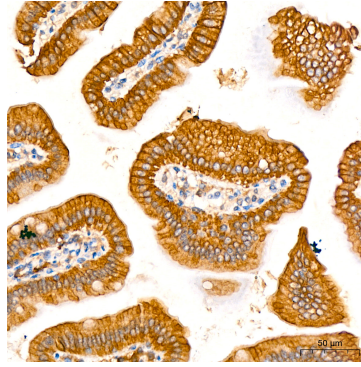


Immunohistochemistry analysis of paraffin-embedded Human colon tissue using [KO Validated] ATG5 Rabbit mAb (A19677) at a dilution of 1:200 (40x lens). High pressure antigen retrieval performed with 0.01M Citrate Buffer (pH 6.0) prior to IHC staining.

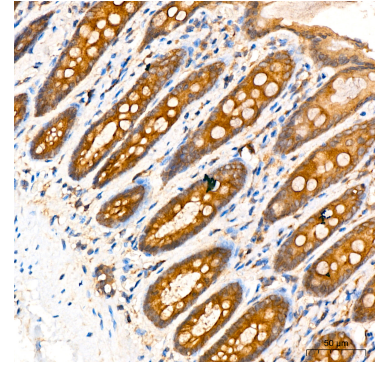
## Validation Data



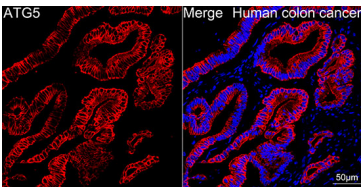
Immunohistochemistry analysis of paraffin-embedded Human kidney tissue using [KO Validated] ATG5 Rabbit mAb (A19677) at a dilution of 1:200 (40x lens). High pressure antigen retrieval performed with 0.01M Citrate Buffer (pH 6.0) prior to IHC staining.



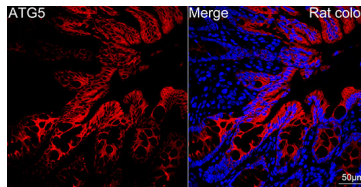
Immunohistochemistry analysis of paraffin-embedded Mouse colon tissue using [KO Validated] ATG5 Rabbit mAb (A19677) at a dilution of 1:200 (40x lens). High pressure antigen retrieval performed with 0.01M Citrate Buffer (pH 6.0) prior to IHC staining.



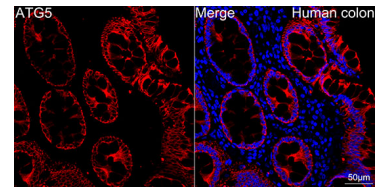
Immunohistochemistry analysis of paraffin-embedded rat colon tissue using [KO Validated] ATG5 Rabbit mAb (A19677) at a dilution of 1:200 (40x lens). High pressure antigen retrieval performed with 0.01M Citrate Buffer (pH 6.0) prior to IHC staining.



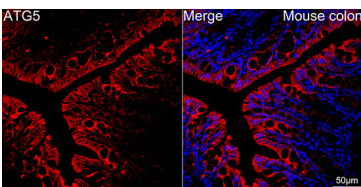
Confocal imaging of paraffin-embedded Human colon cancer tissue using [KO Validated] ATG5 Rabbit mAb (A19677, dilution 1:200) followed by a further incubation with Cy3 Goat Anti-Rabbit IgG (H+L) (AS007, dilution 1:500) (Red). DAPI was used for nuclear staining (Blue). High pressure antigen retrieval performed with 0.01M Citrate Buffer (pH 6.0) prior to IF staining. Objective: 40x.



Confocal imaging of paraffin-embedded Rat colon tissue using [KO Validated] ATG5 Rabbit mAb (A19677, dilution 1:200) followed by a further incubation with Cy3 Goat Anti-Rabbit IgG (H+L) (AS007, dilution 1:500) (Red). DAPI was used for nuclear staining (Blue). High pressure antigen retrieval performed with 0.01M Citrate Buffer (pH 6.0) prior to IF staining. Objective: 40x.



Confocal imaging of paraffin-embedded Human colon tissue using [KO Validated] ATG5 Rabbit mAb (A19677, dilution 1:200) followed by a further incubation with Cy3 Goat Anti-Rabbit IgG (H+L) (AS007, dilution 1:500) (Red). DAPI was used for nuclear staining (Blue). High pressure antigen retrieval performed with 0.01M Citrate Buffer (pH 6.0) prior to IF staining. Objective: 40x.

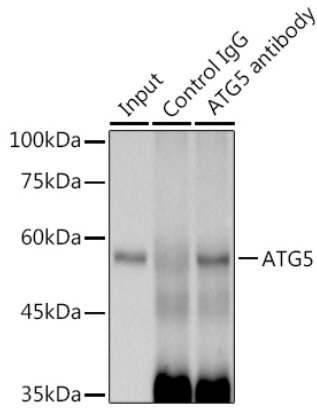


Confocal imaging of paraffin-

## Validation Data

---

embedded Mouse colon tissue using [KO Validated] ATG5 Rabbit mAb (A19677, dilution 1:200) followed by a further incubation with Cy3 Goat Anti-Rabbit IgG (H+L) (AS007, dilution 1:500) (Red). DAPI was used for nuclear staining (Blue). High pressure antigen retrieval performed with 0.01M Citrate Buffer (pH 6.0) prior to IF staining. Objective: 40x.



Immunoprecipitation analysis of 300 µg extracts from 293T cells using 3 µg [KO Validated] ATG5 Rabbit mAb (A19677). Western blot was performed from the immunoprecipitate using [KO Validated] ATG5 Rabbit mAb (A19677) at a dilution of 1:1000.