

A19692

Leader in Biomolecular Solutions for Life Science



FANCD2 Rabbit mAb

Catalog No.: A19692

Recombinant

1 Publications

Basic Information

Observed MW

166kDa

Calculated MW

164kDa

Category

SMab Recombinant Monoclonal
Antibody

Applications

WB,IP,ELISA

Cross-Reactivity

Human,Mouse,Rat

CloneNo number

ARC0172

Background

The Fanconi anemia complementation group (FANC) currently includes FANCA, FANCB, FANCC, FANCD1 (also called BRCA2), FANCD2, FANCE, FANCF, FANCG, FANCI, FANCIJ (also called BRIP1), FANCL, FANCM and FANCN (also called PALB2). The previously defined group FANCH is the same as FANCA. Fanconi anemia is a genetically heterogeneous recessive disorder characterized by cytogenetic instability, hypersensitivity to DNA crosslinking agents, increased chromosomal breakage, and defective DNA repair. The members of the Fanconi anemia complementation group do not share sequence similarity; they are related by their assembly into a common nuclear protein complex. This gene encodes the protein for complementation group D2. This protein is monoubiquitinated in response to DNA damage, resulting in its localization to nuclear foci with other proteins (BRCA1 AND BRCA2) involved in homology-directed DNA repair. Alternative splicing results in multiple transcript variants.

Recommended Dilutions

WB 1:500 - 1:1000

IP 0.5µg-4µg antibody for
200µg-400µg extracts
of whole cells

ELISA Recommended starting
concentration is 1
µg/mL. Please optimize
the concentration
based on your specific
assay requirements.

Immunogen Information

Gene ID
2177

Swiss Prot
Q9BXW9

Immunogen

A synthetic peptide corresponding to a sequence within amino acids 200-300 of human FANCD2 (Q9BXW9).

Synonyms

FA4; FAD; FACD; FAD2; FA-D2; FANCD; FANCD2

Product Information

Source
Rabbit

Isotype
IgG

Purification
Affinity purification

Storage

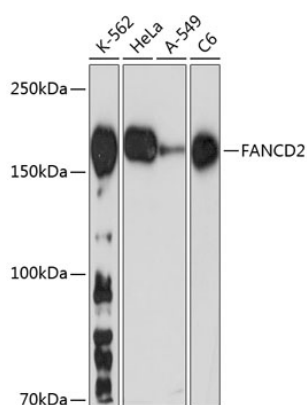
Store at -20°C. Avoid freeze / thaw cycles.

Buffer: PBS with 0.02% sodium azide,0.05% BSA,50% glycerol,pH7.3.

Contact

 www.abclonal.com

Validation Data



Western blot analysis of various lysates using FANCD2 Rabbit mAb (A19692) at 1:1000 dilution.

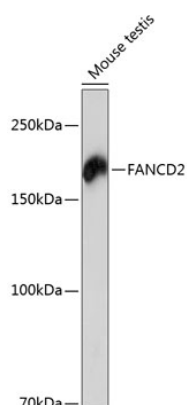
Secondary antibody: HRP-conjugated Goat anti-Rabbit IgG (H+L) (AS014) at 1:10000 dilution.

Lysates/proteins: 25µg per lane.

Blocking buffer: 3% nonfat dry milk in TBST.

Detection: ECL Basic Kit (RM00020).

Exposure time: 90s.



Western blot analysis of lysates from mouse testis, using FANCD2 Rabbit mAb (A19692) at 1:1000 dilution.

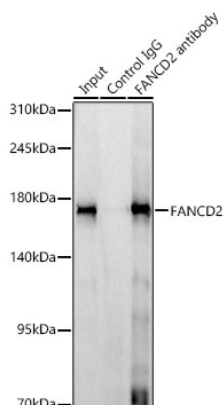
Secondary antibody: HRP-conjugated Goat anti-Rabbit IgG (H+L) (AS014) at 1:10000 dilution.

Lysates/proteins: 25µg per lane.

Blocking buffer: 3% nonfat dry milk in TBST.

Detection: ECL Basic Kit (RM00020).

Exposure time: 3min.



Immunoprecipitation analysis of 300ug extracts of HeLa cells using 3ug FANCD2 Rabbit mAb (A19692). Western blot was performed from the immunoprecipitate using FANCD2 Rabbit mAb (A19692) at a dilution of 1:1000.