

A19693

Leader in Biomolecular Solutions for Life Science



## Bcl-2 Rabbit mAb

Catalog No.: A19693

Recombinant

148 Publications

### Basic Information

#### Observed MW

26kDa

#### Calculated MW

26kDa

#### Category

SMab Recombinant Monoclonal  
Antibody

#### Applications

WB,IHC-P,IP,ELISA

#### Cross-Reactivity

Human,Mouse,Rat

#### CloneNo number

ARC0173

### Background

This gene encodes an integral outer mitochondrial membrane protein that blocks the apoptotic death of some cells such as lymphocytes. Constitutive expression of BCL2, such as in the case of translocation of BCL2 to Ig heavy chain locus, is thought to be the cause of follicular lymphoma. Alternative splicing results in multiple transcript variants.

### Recommended Dilutions

**WB** 1:1000 - 1:2000

**IHC-P** 1:1000 - 1:4000

**IP** 0.5µg-4µg antibody for  
400µg-600µg extracts  
of whole cells

**ELISA** Recommended starting  
concentration is 1  
µg/mL. Please optimize  
the concentration  
based on your specific  
assay requirements.

### Immunogen Information

#### Gene ID

596

#### Swiss Prot

P10415

#### Immunogen

Recombinant fusion protein containing a sequence corresponding to amino acids 1-211 of human Bcl-2 (P10415).

#### Synonyms

Bcl-2; PPP1R50

### Product Information

#### Source

Rabbit

#### Isotype

IgG

#### Purification

Affinity purification

#### Storage

Store at -20°C. Avoid freeze / thaw cycles.

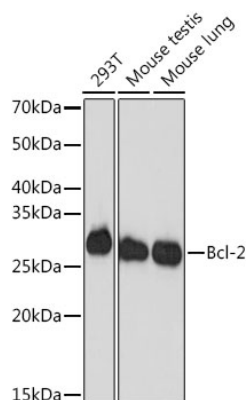
Buffer: PBS with 0.09% Sodium azide,0.05% BSA,50% glycerol,pH7.3.

### Contact

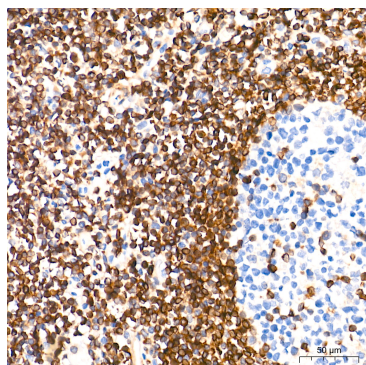


[www.abclonal.com](http://www.abclonal.com)

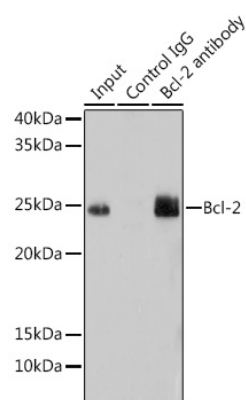
## Validation Data



Western blot analysis of various lysates using Bcl-2 Rabbit mAb (A19693) at 1:1000 dilution.  
 Secondary antibody: HRP-conjugated Goat anti-Rabbit IgG (H+L) (AS014) at 1:10000 dilution.  
 Lysates/proteins: 25µg per lane.  
 Blocking buffer: 3% nonfat dry milk in TBST.  
 Detection: ECL Basic Kit (RM00020).  
 Exposure time: 3min.



Immunohistochemistry analysis of paraffin-embedded Human tonsil tissue using Bcl-2 Rabbit mAb (A19693) at a dilution of 1:2000 (40x lens). High pressure antigen retrieval performed with 0.01M Tris-EDTA Buffer (pH 9.0) prior to IHC staining.



Immunoprecipitation analysis of 200 µg extracts of Mouse lung using 3 µg Bcl-2 antibody (A19693). Western blot was performed from the immunoprecipitate using Bcl-2 antibody (A19693) at a dilution of 1:1000.