

A19700

Leader in Biomolecular Solutions for Life Science



# SQSTM1/p62 Rabbit mAb

Catalog No.: A19700

Recombinant

135 Publications

## Basic Information

### Observed MW

62kDa

### Calculated MW

48kDa

### Category

SMab Recombinant Monoclonal  
Antibody

### Applications

WB,IHC-P,IF/ICC,IP,ELISA

### Cross-Reactivity

Human,Mouse,Rat

### CloneNo number

ARC0180

## Background

This gene encodes a multifunctional protein that binds ubiquitin and regulates activation of the nuclear factor kappa-B (NF- $\kappa$ B) signaling pathway. The protein functions as a scaffolding/adaptor protein in concert with TNF receptor-associated factor 6 to mediate activation of NF- $\kappa$ B in response to upstream signals. Alternatively spliced transcript variants encoding either the same or different isoforms have been identified for this gene. Mutations in this gene result in sporadic and familial Paget disease of bone.

## Recommended Dilutions

**WB** 1:20000 - 1:80000

**IHC-P** 1:500 - 1:5000

**IF/ICC** 1:50 - 1:200

**IP** 0.5 $\mu$ g-4 $\mu$ g antibody for  
200 $\mu$ g-400 $\mu$ g extracts  
of whole cells

**ELISA** Recommended starting  
concentration is 1  
 $\mu$ g/mL. Please optimize  
the concentration  
based on your specific  
assay requirements.

## Immunogen Information

### Gene ID

8878

### Swiss Prot

Q13501

### Immunogen

Synthetic peptide. This information is considered to be commercially sensitive.

### Synonyms

p60; p62; A170; DMRV; OSIL; PDB3; ZIP3; p62B; NADGP; FTDALS3; SQSTM1/p62

## Product Information

### Source

Rabbit

### Isotype

IgG

### Purification

Affinity purification

### Storage

Store at -20°C. Avoid freeze / thaw cycles.

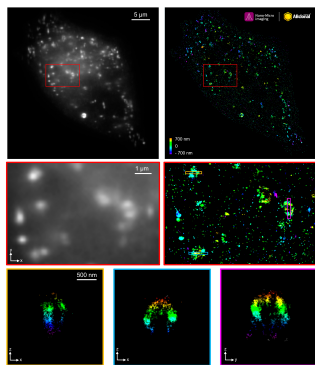
Buffer: PBS containing 50% glycerol and 0.05% BSA, preserved with proclin300 or sodium azide (as specified on the Certificate of Analysis), pH 7.3.

## Contact

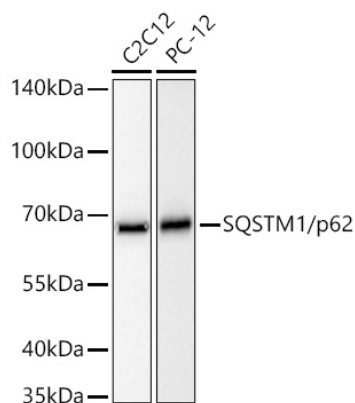


[www.abclonal.com](http://www.abclonal.com)

## Validation Data



The STORM super-resolution (SR) imaging of HeLa cells using SQSTM1/p62 Rabbit mAb (A19700, ABclonal) at dilution of 1:200 with 3% paraformaldehyde (PFA) +0.1% glutaraldehyde (GA) fixation. The immunostaining was performed by Full Automatic Immunofluorescence Workflow System (Workflow Ultra300, Nano-Micro imaging, China). Image was performed with Single-Molecule Localization Super-Resolution Microscopy (STORM Ultra300, Nano-Micro imaging, China). We acknowledge Nano-Micro imaging Biotechnology Co., Ltd. in SR image processing and kindly providing this image.



Western blot analysis of various lysates using SQSTM1/p62 Rabbit mAb (A19700) at 1:20000 dilution incubated overnight at 4°C.

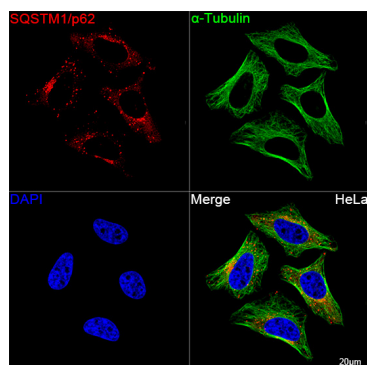
Secondary antibody: HRP-conjugated Goat anti-Rabbit IgG (H+L) (AS014) at 1:10000 dilution.

Lysates/proteins: 25 µg per lane.

Blocking buffer: 3% nonfat dry milk in TBST.

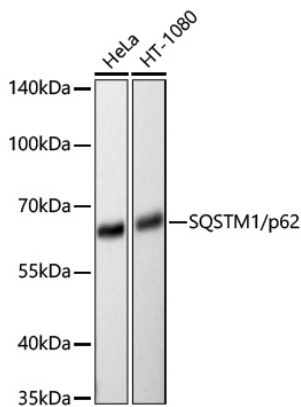
Detection: ECL Basic Kit (RM00020).

Exposure time: 10s.



## Validation Data

Confocal imaging of HeLa cells using SQSTM1/p62 Rabbit mAb (A19700, dilution 1:200) followed by a further incubation with Cy3 Goat Anti-Rabbit IgG (H+L) (AS007, dilution 1:500) (Red). The cells were counterstained with  $\alpha$ -Tubulin Mouse mAb (AC012, dilution 1:400) followed by incubation with ABflo® 488-conjugated Goat Anti-Mouse IgG (H+L) Ab (AS076, dilution 1:500) (Green). DAPI was used for nuclear staining (Blue). Objective: 100x.



Western blot analysis of various lysates using SQSTM1/p62 Rabbit mAb (A19700) at 1:20000 dilution incubated overnight at 4°C.

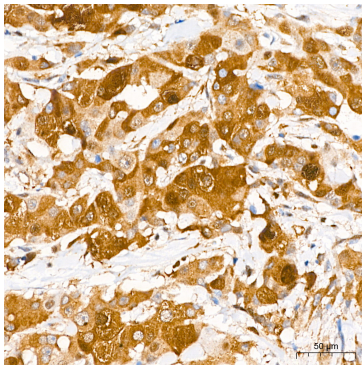
Secondary antibody: HRP-conjugated Goat anti-Rabbit IgG (H+L) (AS014) at 1:10000 dilution.

Lysates/proteins: 25  $\mu$ g per lane.

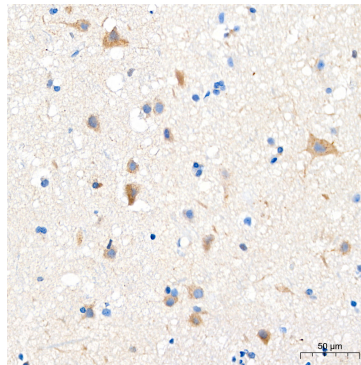
Blocking buffer: 3% nonfat dry milk in TBST.

Detection: ECL Basic Kit (RM00020).

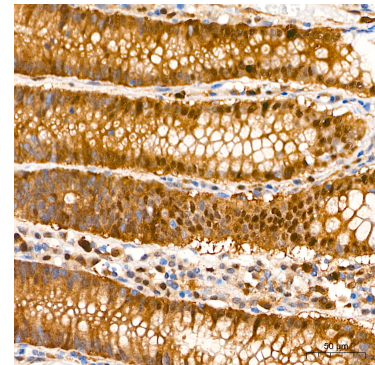
Exposure time: 30s.



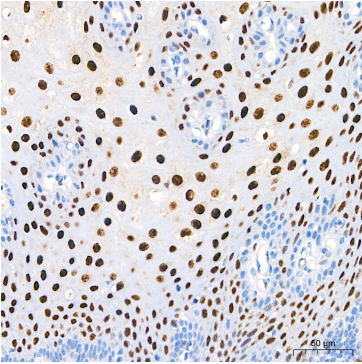
Immunohistochemistry analysis of paraffin-embedded Human breast cancer tissue using SQSTM1/p62 Rabbit mAb (A19700) at a dilution of 1:500 (40x lens). High pressure antigen retrieval performed with 0.01M Citrate Buffer(pH 6.0) prior to IHC staining.



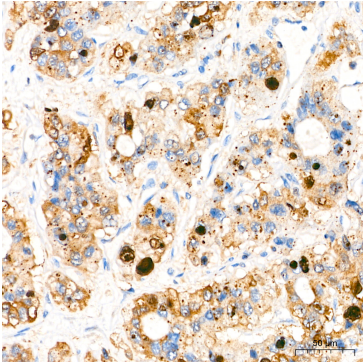
Immunohistochemistry analysis of paraffin-embedded Human brain tissue using SQSTM1/p62 Rabbit mAb (A19700) at a dilution of 1:500 (40x lens). High pressure antigen retrieval performed with 0.01M Citrate Buffer(pH 6.0) prior to IHC staining.



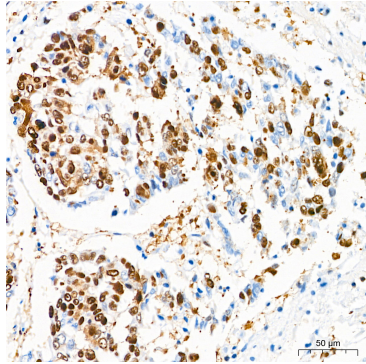
Immunohistochemistry analysis of paraffin-embedded Human colon tissue using SQSTM1/p62 Rabbit mAb (A19700) at a dilution of 1:500 (40x lens). High pressure antigen retrieval performed with 0.01M Citrate Buffer(pH 6.0) prior to IHC staining.



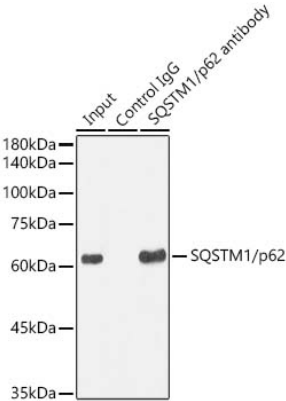
Immunohistochemistry analysis of paraffin-embedded Human esophagus tissue using SQSTM1/p62 Rabbit mAb (A19700) at a dilution of 1:500 (40x lens). High pressure antigen retrieval performed with 0.01M Citrate Buffer(pH 6.0) prior to IHC staining.



Immunohistochemistry analysis of paraffin-embedded Human liver cancer tissue using SQSTM1/p62 Rabbit mAb (A19700) at a dilution of 1:500 (40x lens). High pressure antigen retrieval performed with 0.01M Citrate Buffer(pH 6.0) prior to IHC staining.



Immunohistochemistry analysis of paraffin-embedded Human lung squamous carcinoma tissue using SQSTM1/p62 Rabbit mAb (A19700) at a dilution of 1:500 (40x lens). High pressure antigen retrieval performed with 0.01M Citrate Buffer(pH 6.0) prior to IHC staining.



Immunoprecipitation analysis of 300 μg extracts from HeLa cells using 3 μg SQSTM1/p62 Rabbit mAb (A19700). Western blot was performed from the immunoprecipitate using SQSTM1/p62 Rabbit mAb (A19700) at a dilution of 1:1000.