

A19705

Leader in Biomolecular Solutions for Life Science



HSPA4 Rabbit mAb

Catalog No.: A19705

Recombinant

1 Publications

Basic Information

Observed MW

110kDa

Calculated MW

94kDa

Category

SMab Recombinant Monoclonal
Antibody

Applications

WB,IHC-P,ELISA

Cross-Reactivity

Human,Mouse,Rat

CloneNo number

ARC2237

Background

Predicted to enable ATP binding activity. Involved in chaperone-mediated protein complex assembly and protein insertion into mitochondrial outer membrane. Located in cytosol and extracellular exosome. Implicated in Chagas disease. Biomarker of chronic obstructive pulmonary disease; rheumatoid arthritis; type 2 diabetes mellitus; and ulcerative colitis.

Recommended Dilutions

WB 1:500 - 1:2000

IHC-P 1:50 - 1:200

ELISA Recommended starting concentration is 1 µg/mL. Please optimize the concentration based on your specific assay requirements.

Immunogen Information

Gene ID

3308

Swiss Prot

P34932

Immunogen

A synthetic peptide corresponding to a sequence within amino acids 700-800 of human HSPA4 (P34932).

Synonyms

RY; APG-2; HSPH2; hsp70; hsp70RY; HEL-S-5a; HS24/P52; HSPA4

Contact

 www.abclonal.com

Product Information

Source

Rabbit

Isotype

IgG

Purification

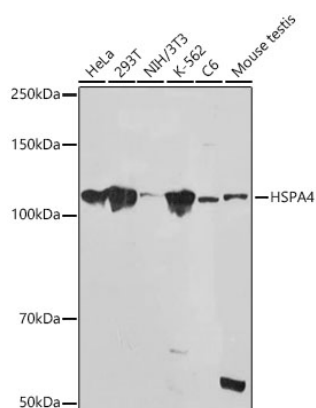
Affinity purification

Storage

Store at -20°C. Avoid freeze / thaw cycles.

Buffer: PBS with 0.02% sodium azide,0.05% BSA,50% glycerol,pH7.3.

Validation Data



Western blot analysis of various lysates using HSPA4 Rabbit mAb (A19705) at 1:1000 dilution.

Secondary antibody: HRP-conjugated Goat anti-Rabbit IgG (H+L) (AS014) at 1:10000 dilution.

Lysates/proteins: 25µg per lane.

Blocking buffer: 3% nonfat dry milk in TBST.

Detection: ECL Basic Kit (RM00020).

Exposure time: 90s.