

A19711

Leader in Biomolecular Solutions for Life Science



Human IgG Rabbit mAb

Catalog No.: A19711

Recombinant

26 Publications

Basic Information

Observed MW

52kDa

Calculated MW

52kDa

Category

SMab Recombinant Monoclonal
Antibody

Applications

WB,ELISA

Cross-Reactivity

Human

CloneNo number

ARC2241

Background

Predicted to enable antigen binding activity and immunoglobulin receptor binding activity. Predicted to be involved in several processes, including activation of immune response; defense response to other organism; and phagocytosis. Predicted to act upstream of or within several processes, including immunoglobulin mediated immune response; positive regulation of hypersensitivity; and positive regulation of phagocytosis. Located in extracellular space.

Recommended Dilutions

WB 1:3000 - 1:18000

ELISA Recommended starting concentration is 1 µg/mL. Please optimize the concentration based on your specific assay requirements.

Immunogen Information

Gene ID

3500

Swiss Prot

P01857,P01859,P01860,P01861

Immunogen

Synthetic peptide. This information is considered to be commercially sensitive.

Synonyms

Contact

 www.abclonal.com

Product Information

Source

Rabbit

Isotype

IgG

Purification

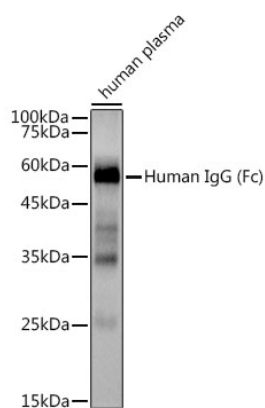
Affinity purification

Storage

Store at -20°C. Avoid freeze / thaw cycles.

Buffer: PBS with 0.02% sodium azide,0.05% BSA,50% glycerol,pH7.3.

Validation Data



Western blot analysis of lysates from Human plasma, using Human IgG Rabbit mAb (A19711) at 1:3000 dilution.
Secondary antibody: HRP-conjugated Goat anti-Rabbit IgG (H+L) (AS014) at 1:10000 dilution.
Lysates/proteins: 25µg per lane.
Blocking buffer: 3% nonfat dry milk in TBST.
Detection: ECL Basic Kit (RM00020).
Exposure time: 1s.