

A19720

Leader in Biomolecular Solutions for Life Science



# Human Ig Kappa Chain Rabbit mAb

Catalog No.: A19720

Recombinant

## Basic Information

### Observed MW

25kDa

### Calculated MW

12kDa

### Category

SMab Recombinant Monoclonal  
Antibody

### Applications

WB,ELISA

### Cross-Reactivity

Human

### CloneNo number

ARC2247

## Background

Predicted to enable antigen binding activity and immunoglobulin receptor binding activity. Involved in retina homeostasis. Located in blood microparticle and extracellular exosome.

## Recommended Dilutions

**WB** 1:500 - 1:1000

**ELISA** Recommended starting concentration is 1 µg/mL. Please optimize the concentration based on your specific assay requirements.

## Immunogen Information

### Gene ID

3514

### Swiss Prot

P01834

### Immunogen

Recombinant fusion protein containing a sequence corresponding to amino acids 1-107 of human Ig Kappa Chain (P01834).

### Synonyms

Km; HCAK1; IGKCD; Human Ig Kappa Chain

## Contact

 [www.abclonal.com](http://www.abclonal.com)

## Product Information

### Source

Rabbit

### Isotype

IgG

### Purification

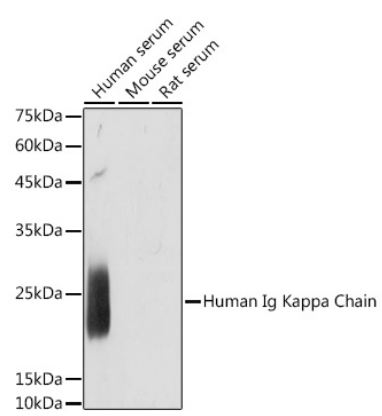
Affinity purification

### Storage

Store at -20°C. Avoid freeze / thaw cycles.

Buffer: PBS with 0.02% sodium azide, 0.05% BSA, 50% glycerol, pH7.3.

# Validation Data



Western blot analysis of various lysates using Human Ig Kappa Chain Rabbit mAb (A19720) at 1:1000 dilution.  
Secondary antibody: HRP-conjugated Goat anti-Rabbit IgG (H+L) (AS014) at 1:10000 dilution.  
Lysates/proteins: 25µg per lane.  
Blocking buffer: 3% nonfat dry milk in TBST.  
Detection: ECL Enhanced Kit (RM00021).  
Exposure time: 1s.