

A1972

Leader in Biomolecular Solutions for Life Science



Placental lactogen (CSH1) Rabbit pAb

Catalog No.: A1972

Basic Information

Observed MW

Calculated MW

25kDa

Category

Polyclonal Antibody

Applications

IHC-P, ELISA

Cross-Reactivity

Human

Background

The protein encoded by this gene is a member of the somatotropin/prolactin family of hormones and plays an important role in growth control. The gene is located at the growth hormone locus on chromosome 17 along with four other related genes in the same transcriptional orientation; an arrangement which is thought to have evolved by a series of gene duplications. Although the five genes share a remarkably high degree of sequence identity, they are expressed selectively in different tissues. Alternative splicing generates additional isoforms of each of the five growth hormones, leading to further diversity and potential for specialization. This particular family member is expressed mainly in the placenta and utilizes multiple transcription initiation sites. Expression of the identical mature proteins for chorionic somatomammotropin hormones 1 and 2 is upregulated during development, although the ratio of 1 to 2 increases by term. Mutations in this gene result in placental lactogen deficiency and Silver-Russell syndrome.

Recommended Dilutions

IHC-P 1:50 - 1:100

ELISA Recommended starting concentration is 1 µg/mL. Please optimize the concentration based on your specific assay requirements.

Immunogen Information

Gene ID

1442

Swiss Prot

P0DML2

Immunogen

Recombinant protein (or fragment). This information is considered to be commercially sensitive.

Synonyms

PL; CSA; CS-1; CSMT; GHB3; hCS-1; hCS-A; Placental lactogen (CSH1)

Contact

 www.abclonal.com

Product Information

Source

Rabbit

Isotype

IgG

Purification

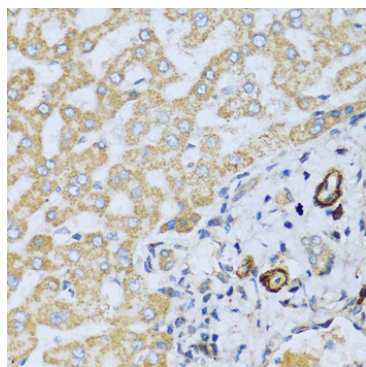
Affinity purification

Storage

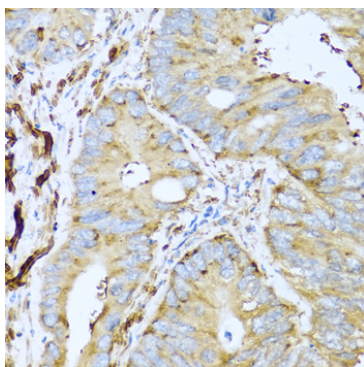
Store at -20°C. Avoid freeze / thaw cycles.

Buffer: PBS with 0.02% sodium azide, 50% glycerol, pH7.3.

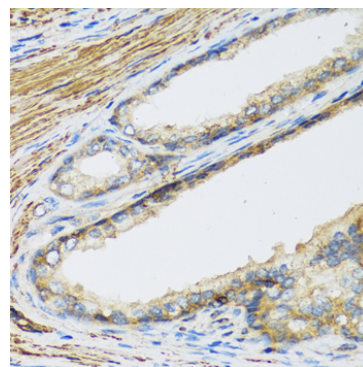
Validation Data



Immunohistochemistry analysis of paraffin-embedded Human liver using Placental lactogen (CSH1) Rabbit pAb (A1972) at dilution of 1:100 (40x lens). Microwave antigen retrieval performed with 0.01M PBS Buffer (pH 7.2) prior to IHC staining.



Immunohistochemistry analysis of paraffin-embedded Human colon carcinoma using Placental lactogen (CSH1) Rabbit pAb (A1972) at dilution of 1:100 (40x lens). Microwave antigen retrieval performed with 0.01M PBS Buffer (pH 7.2) prior to IHC staining.



Immunohistochemistry analysis of paraffin-embedded Human prostate using Placental lactogen (CSH1) Rabbit pAb (A1972) at dilution of 1:100 (40x lens). Microwave antigen retrieval performed with 0.01M PBS Buffer (pH 7.2) prior to IHC staining.