

A19749

Leader in Biomolecular Solutions for Life Science



Rad21 Rabbit mAb

Catalog No.: A19749

Recombinant

1 Publications

Basic Information

Observed MW

130kDa

Calculated MW

72kDa

Category

SMab Recombinant Monoclonal
Antibody

Applications

WB,ChIP,ChIP-seq,ELISA

Cross-Reactivity

Human,Mouse,Rat

CloneNo number

ARC2276

Background

The protein encoded by this gene is highly similar to the gene product of *Schizosaccharomyces pombe rad21*, a gene involved in the repair of DNA double-strand breaks, as well as in chromatid cohesion during mitosis. This protein is a nuclear phospho-protein, which becomes hyperphosphorylated in cell cycle M phase. The highly regulated association of this protein with mitotic chromatin specifically at the centromere region suggests its role in sister chromatid cohesion in mitotic cells.

Recommended Dilutions

WB 1:1000 - 1:2000

ELISA Recommended starting concentration is 1 µg/mL. Please optimize the concentration based on your specific assay requirements.

ChIP 5µg antibody for 10µg-15µg of Chromatin

ChIP-seq 1:50 - 1:100

Contact

 www.abclonal.com

Immunogen Information

Gene ID

5885

Swiss Prot

O60216

Immunogen

A synthetic peptide corresponding to a sequence within amino acids 532-631 of human Rad21 (O60216).

Synonyms

MGS; HR21; MCD1; NXP1; SCC1; CDLS4; hHR21; HRAD21; Rad21

Product Information

Source

Rabbit

Isotype

IgG

Purification

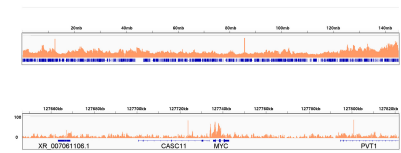
Affinity purification

Storage

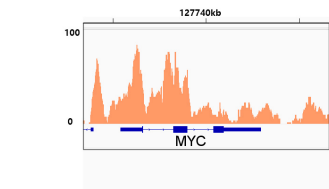
Store at -20°C. Avoid freeze / thaw cycles.

Buffer: PBS with 0.02% sodium azide,0.05% BSA,50% glycerol,pH7.3.

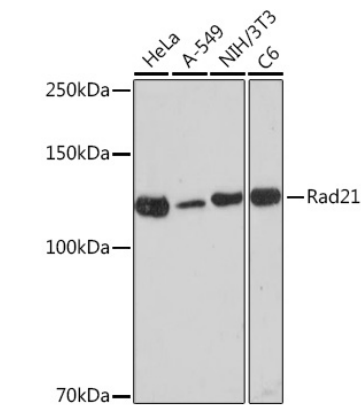
Validation Data



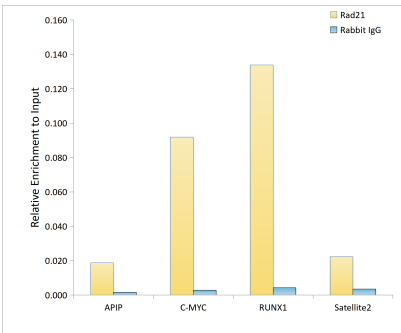
Chromatin immunoprecipitation was performed with 10.7 µg of cross-linked chromatin from A-549 cells using 5 µg of Rad21 Rabbit mAb (A19749). DNA libraries were prepared using Scale ssDNA-seq Lib Prep Kit for Illumina V2 (RK20228). The ChIP sequencing results indicate the enrichment pattern of Rad21 across chromosome 8 (upper panel) and the genomic region encompassing MYC, a representative gene enriched in Rad21 (lower panel).



Chromatin immunoprecipitation was performed with 10.7 µg of cross-linked chromatin from A-549 cells using 5 µg of Rad21 Rabbit mAb (A19749). DNA libraries were prepared using Scale ssDNA-seq Lib Prep Kit for Illumina V2 (RK20228). The ChIP sequencing results indicate the enrichment pattern of Rad21 in the representative genomic region surrounding MYC gene.



Western blot analysis of various lysates using Rad21 Rabbit mAb (A19749) at 1:1000 dilution.
Secondary antibody: HRP-conjugated Goat anti-Rabbit IgG (H+L) (AS014) at 1:10000 dilution.
Lysates/proteins: 25µg per lane.
Blocking buffer: 3% nonfat dry milk in TBST.
Detection: ECL Enhanced Kit (RM00021).
Exposure time: 180s.



Chromatin immunoprecipitation analysis of extracts of A-549 cells, using Rad21 antibody (A19749) and rabbit IgG. The amount of immunoprecipitated DNA was checked by quantitative PCR. Histogram was constructed by the ratios of the immunoprecipitated DNA to the input.