

A19781

Leader in Biomolecular Solutions for Life Science



Nesprin 1 Rabbit mAb

Catalog No.: A19781

Recombinant

Basic Information

Observed MW

112kDa

Calculated MW

1011kDa/112kDa

Category

SMab Recombinant Monoclonal
Antibody

Applications

WB,IF/ICC,ELISA

Cross-Reactivity

Human,Mouse

CloneNo number

ARC2307

Recommended Dilutions

WB 1:500 - 1:2000

IF/ICC 1:50 - 1:200

ELISA Recommended starting concentration is 1 µg/mL. Please optimize the concentration based on your specific assay requirements.

Contact

 www.abclonal.com

Background

This gene encodes a spectrin repeat containing protein expressed in skeletal and smooth muscle, and peripheral blood lymphocytes, that localizes to the nuclear membrane. Mutations in this gene have been associated with autosomal recessive spinocerebellar ataxia 8, also referred to as autosomal recessive cerebellar ataxia type 1 or recessive ataxia of Beauce. Alternatively spliced transcript variants encoding different isoforms have been described.

Immunogen Information

Gene ID

23345

Swiss Prot

Q8NF91

Immunogen

Recombinant fusion protein containing a sequence corresponding to amino acids 8200-8400 of human Nesprin 1 (Q8NF91).

Synonyms

8B; AMC3; AMCM; CPG2; ARCA1; EDMD4; KASH1; MYNE1; Nesp1; SCAR8; C6orf98; dJ45H2.2; Nesprin 1

Product Information

Source

Rabbit

Isotype

IgG

Purification

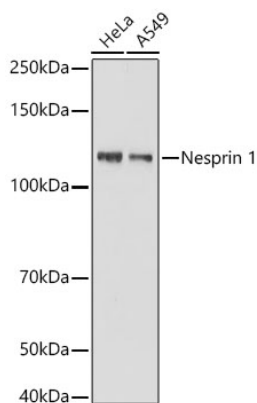
Affinity purification

Storage

Store at -20°C. Avoid freeze / thaw cycles.

Buffer: PBS with 0.02% sodium azide,0.05% BSA,50% glycerol,pH7.3.

Validation Data



Western blot analysis of various lysates using Nesprin 1 Rabbit mAb (A19781) at 1:1000 dilution.

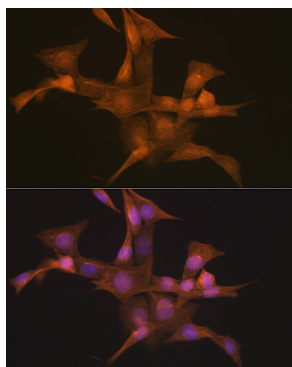
Secondary antibody: HRP-conjugated Goat anti-Rabbit IgG (H+L) (AS014) at 1:10000 dilution.

Lysates / proteins: 25 µg per lane.

Blocking buffer: 3 % nonfat dry milk in TBST.

Detection: ECL Basic Kit (RM00020).

Exposure time: 10s.



Immunofluorescence analysis of NIH-3T3 cells using Nesprin 1 Rabbit mAb (A19781) at dilution of 1:100 (40x lens). Secondary antibody: Cy3-conjugated Goat anti-Rabbit IgG (H+L) (AS007) at 1:500 dilution. Blue: DAPI for nuclear staining.