

A19946

Leader in Biomolecular Solutions for Life Science



[KO Validated] ATPIF1 Rabbit pAb

Catalog No.: A19946

KO Validated

Basic Information

Observed MW

12kDa

Calculated MW

12kDa

Category

Polyclonal Antibody

Applications

WB,IF/ICC,ELISA

Cross-Reactivity

Human,Mouse

Background

Enables several functions, including ATPase binding activity; angiotensin binding activity; and mitochondrial proton-transporting ATP synthase complex binding activity. Involved in several processes, including mitochondrial depolarization; negative regulation of ATPase activity; and regulation of protein targeting to mitochondrion. Located in cell surface and mitochondrion.

Recommended Dilutions

WB 1:500 - 1:2000

IF/ICC 1:50 - 1:100

ELISA Recommended starting concentration is 1 µg/mL. Please optimize the concentration based on your specific assay requirements.

Immunogen Information

Gene ID

93974

Swiss Prot

Q9UII2

Immunogen

Recombinant protein (or fragment). This information is considered to be commercially sensitive.

Synonyms

IP; ATP1; ATP1P; ATP1F1; F1

Contact

 www.abclonal.com

Product Information

Source

Rabbit

Isotype

IgG

Purification

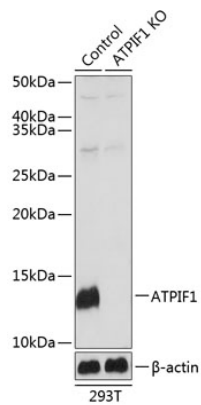
Affinity purification

Storage

Store at -20°C. Avoid freeze / thaw cycles.

Buffer: PBS with 0.01% thimerosal, 50% glycerol, pH 7.3.

Validation Data



Western blot analysis of lysates from wild type (WT) and ATPIF1 knockout (KO) 293T cells, using [KO Validated] ATPIF1 Rabbit pAb (A19946) at 1:1000 dilution. Secondary antibody: HRP-conjugated Goat anti-Rabbit IgG (H+L) (AS014) at 1:10000 dilution.

Lysates/proteins: 25µg per lane.

Blocking buffer: 3% nonfat dry milk in TBST.

Detection: ECL Basic Kit (RM00020).

Exposure time: 1s.