

A19983

Leader in Biomolecular Solutions for Life Science



[KO Validated] LAMTOR1 Rabbit pAb

Catalog No.: A19983

KO Validated

Basic Information

Observed MW

18kDa

Calculated MW

18kDa

Category

Polyclonal Antibody

Applications

WB,IF/ICC,ELISA

Cross-Reactivity

Human,Mouse,Rat

Background

Enables GTPase binding activity. Contributes to guanyl-nucleotide exchange factor activity and molecular adaptor activity. Involved in several processes, including cholesterol homeostasis; positive regulation of TOR signaling; and regulation of cholesterol transport. Located in lysosome. Part of Ragulator complex.

Recommended Dilutions

WB 1:500 - 1:1000

IF/ICC 1:50 - 1:100

ELISA Recommended starting concentration is 1 µg/mL. Please optimize the concentration based on your specific assay requirements.

Immunogen Information

Gene ID

55004

Swiss Prot

Q6IAA8

Immunogen

Recombinant protein (or fragment). This information is considered to be commercially sensitive.

Synonyms

p18; PDRO; C11orf59; p27RF-Rho; Ragulator1; R1

Contact



www.abclonal.com

Product Information

Source

Rabbit

Isotype

IgG

Purification

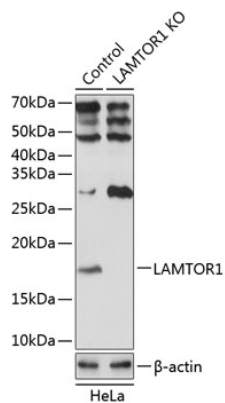
Affinity purification

Storage

Store at -20°C. Avoid freeze / thaw cycles.

Buffer: PBS with 0.01% thimerosal, 50% glycerol, pH7.3.

Validation Data



Western blot analysis of lysates from wild type (WT) and LAMTOR1 knockout (KO) HeLa cells, using [KO Validated] LAMTOR1 Rabbit pAb (A19983) at 1:1000 dilution. Secondary antibody: HRP-conjugated Goat anti-Rabbit IgG (H+L) (AS014) at 1:10000 dilution.
Lysates/proteins: 25µg per lane.
Blocking buffer: 3% nonfat dry milk in TBST.
Detection: ECL Basic Kit (RM00020).
Exposure time: 1s.