

A20138

Leader in Biomolecular Solutions for Life Science



SARS-CoV-2 Spike S2 ECD Rabbit pAb

Catalog No.: A20138

Basic Information

Observed MW

75kDa

Calculated MW

141kDa

Category

Polyclonal Antibody

Applications

WB,IF/ICC,IP,ELISA,DB

Cross-Reactivity

Human,SARS-CoV-2

Background

Severe acute respiratory syndrome coronavirus 2 (SARS-CoV-2) is an enveloped, positive-sense, single-stranded RNA virus that causes coronavirus disease 2019 (COVID-19). Virus particles include the RNA genetic material and structural proteins needed for invasion of host cells. Once inside the cell the infecting RNA is used to encode structural proteins that make up virus particles, nonstructural proteins that direct virus assembly, transcription, replication and host control and accessory proteins whose function has not been determined.~ The structural proteins of SARS-CoV-2 include the envelope protein (E), spike or surface glycoprotein (S), membrane protein (M) and the nucleocapsid protein (N). The spike glycoprotein is found on the outside of the virus particle and gives coronavirus viruses their crown-like appearance. This glycoprotein mediates attachment of the virus particle and entry into the host cell. S protein is an important target for vaccine development, antibody therapies and diagnostic antigen-based tests.

Recommended Dilutions

WB 1:2000 - 1:6000

DB 1:500 - 1:2000

IF/ICC 1:50 - 1:200

IP 0.5µg-4µg antibody for
200µg-400µg extracts
of whole cells

ELISA Recommended starting
concentration is 1
µg/mL. Please optimize
the concentration
based on your specific
assay requirements.

Immunogen Information

Gene ID

43740568

Swiss Prot

P0DTC2

Immunogen

Synthetic peptide. This information is considered to be commercially sensitive.

Synonyms

spike glycoprotein; SARS-CoV-2 Spike S2 ECD

Product Information

Source

Rabbit

Isotype

IgG

Purification

Affinity purification

Storage

Store at -20°C. Avoid freeze / thaw cycles.

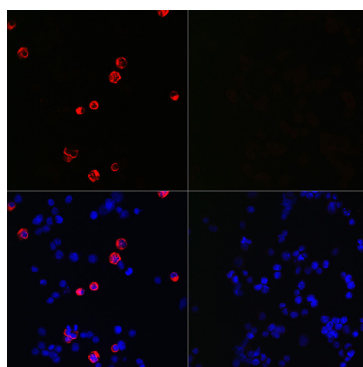
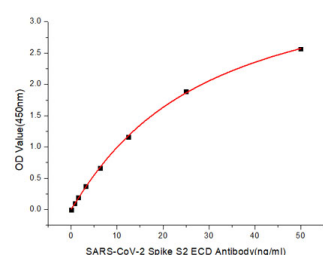
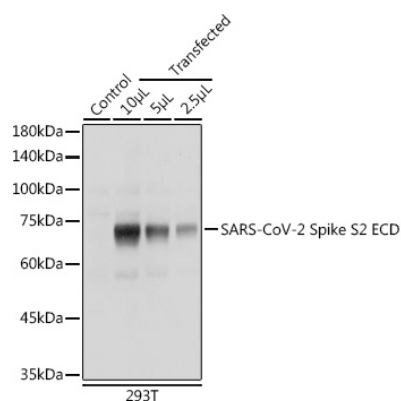
Buffer: PBS containing 50% glycerol, preserved with proclin300 or sodium azide (as specified on the Certificate of Analysis), pH 7.3.

Contact



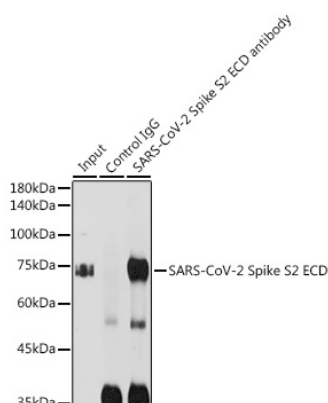
www.abclonal.com

Validation Data



Immobilized Recombinant SARS-COV2 S-ECD-PFS Protein(RP01283LQ) at 1µg/mL (100µL/well) can bind SARS-CoV-2 Spike S2 ECD Rabbit pAb (A20138) with a linear range of 3.12-50ng/mL.

Immunofluorescence analysis of 293T cells transfected with SARS-CoV-2 Spike S2 ECD fusion protein (top left) and untreated 293T cells (top right) use SARS-CoV-2 Spike S2 ECD Rabbit pAb (A20138) at dilution of 1:100 (40x lens). Secondary antibody: Cy3-conjugated Goat anti-Rabbit IgG (H+L) (AS007) at 1:500 dilution. Blue: DAPI for nuclear staining.



Immunoprecipitation analysis of 300 µg extracts of 293T cells using 3 µg SARS-CoV-2 Spike S2 ECD antibody (A20138). Western blot was performed from the immunoprecipitate using SARS-CoV-2 Spike S2 ECD antibody (A20138) at a dilution of 1:5000.