

A20141

Leader in Biomolecular Solutions for Life Science



# SARS-CoV-2 Spike RBD Mouse mAb, BSA free

Catalog No.: A20141

1 Publications

## Basic Information

### Observed MW

30kDa

### Calculated MW

### Category

Monoclonal Antibody

### Applications

WB, IF/ICC, ELISA, DB

### Cross-Reactivity

SARS-CoV-2

### CloneNo number

AMC0360

## Background

Severe acute respiratory syndrome coronavirus 2 (SARS-CoV-2) is an enveloped, positive-sense, single-stranded RNA virus that causes coronavirus disease 2019 (COVID-19). Virus particles include the RNA genetic material and structural proteins needed for invasion of host cells. Once inside the cell the infecting RNA is used to encode structural proteins that make up virus particles, nonstructural proteins that direct virus assembly, transcription, replication and host control and accessory proteins whose function has not been determined.~ The structural proteins of SARS-CoV-2 include the envelope protein (E), spike or surface glycoprotein (S), membrane protein (M) and the nucleocapsid protein (N). The spike glycoprotein is found on the outside of the virus particle and gives coronavirus viruses their crown-like appearance. This glycoprotein mediates attachment of the virus particle and entry into the host cell. S protein is an important target for vaccine development, antibody therapies and diagnostic antigen-based tests.

## Recommended Dilutions

**WB** 1:100 - 1:500

**DB** 1:500 - 1:12000

**IF/ICC** 1:50 - 1:200

**ELISA** Recommended starting concentration is 1 µg/mL. Please optimize the concentration based on your specific assay requirements.

## Immunogen Information

### Gene ID

43740568

### Swiss Prot

### Immunogen

Recombinant protein (or fragment). This information is considered to be commercially sensitive.

### Synonyms

spike glycoprotein; SARS-CoV-2 Spike RBD

## Product Information

### Source

Mouse

### Isotype

IgG2b,kappa

### Purification

Affinity purification

### Storage

Store at -20°C. Avoid freeze / thaw cycles.

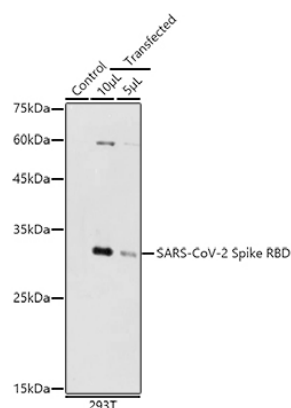
Buffer: PBS with 0.05% proclin300, 50% glycerol, pH7.3.

## Contact



[www.abclonal.com](http://www.abclonal.com)

## Validation Data



Western blot analysis of lysates from 293T cells, using SARS-CoV-2 Spike RBD Mouse mAb, BSA free (A20141) at 1:500 dilution.

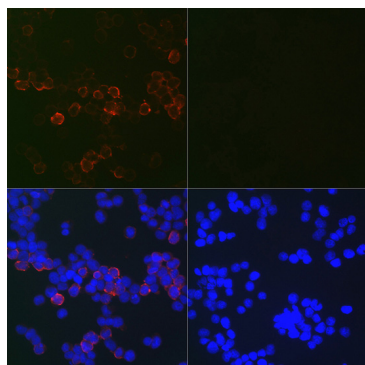
Secondary antibody: HRP-conjugated Goat anti-Mouse IgG (H+L) (AS003) at 1:10000 dilution.

Lysates/proteins: 25µg per lane.

Blocking buffer: 3% nonfat dry milk in TBST.

Detection: ECL Basic Kit (RM00020).

Exposure time: 180s.



Immunofluorescence analysis of 293T cells transfected with SARS-COV-2 Spike RBD protein and untreated 293T cells use SARS-COV-2 Spike RBD Mouse mAb (A20141) at dilution of 1:100 (40x lens). Blue: DAPI for nuclear staining.