

A20145

Leader in Biomolecular Solutions for Life Science



pan-Tri-Methyl lysine Rabbit pAb

Catalog No.: A20145

1 Publications

Basic Information

Observed MW

15-74kDa

Calculated MW

Category

Polyclonal Antibody

Applications

WB,IP,ChIP,ELISA

Cross-Reactivity

Human,Mouse,Rat,Other (Wide Range Predicted)

Background

Methylation of lysine residues is a common regulatory post-translational modification (PTM) that results in the mono-, di-, or tri-methylation of lysine at ϵ -amine groups by protein lysine methyltransferases (PKMTs). The post-translational ϵ -amino lysine methylated proteins is an important reversible modification which plays a vital role in the regulation of many cellular processes including chromatin dynamics and gene transcription. Methylation of lysine residues is modulated by specific counteractive enzymes including lysine methylases (KMTs) and demethylases (KDMs). Lysine trimethylation occurs in both histones and non-histone substrates. It has become promising targets for discovery of anti-cancer drugs.

Recommended Dilutions

WB 1:500 - 1:1000

IP 0.5 μ g-4 μ g antibody for
200 μ g-400 μ g extracts
of whole cells

ELISA Recommended starting
concentration is 1
 μ g/mL. Please optimize
the concentration
based on your specific
assay requirements.

ChIP 3 μ g antibody for
5 μ g-10 μ g of Chromatin

Immunogen Information

Gene ID

Swiss Prot

Immunogen

Synthetic peptide. This information is considered to be commercially sensitive.

Synonyms

Product Information

Source
Rabbit

Isotype
IgG

Purification
Affinity purification

Storage

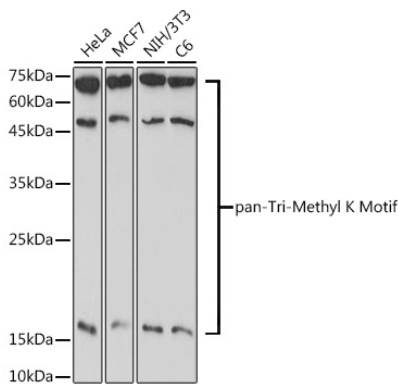
Store at -20°C. Avoid freeze / thaw cycles.

Buffer: PBS containing 50% glycerol, preserved with proclin300 or sodium azide (as specified on the Certificate of Analysis), pH 7.3.

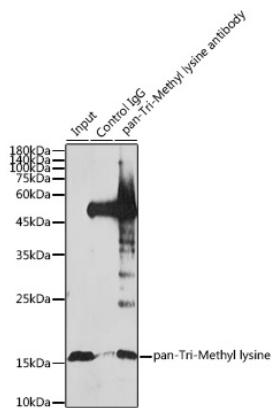
Contact

 www.abclonal.com

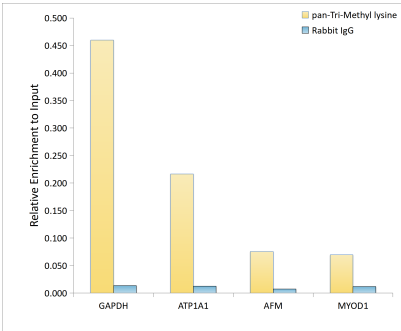
Validation Data



Western blot analysis of various lysates using pan-Tri-Methyl lysine Rabbit pAb (A20145) at 1:1000 dilution.
Secondary antibody: HRP-conjugated Goat anti-Rabbit IgG (H+L) (AS014) at 1:10000 dilution.
Lysates/proteins: 25µg per lane.
Blocking buffer: 3% nonfat dry milk in TBST.
Detection: ECL Basic Kit (RM00020).
Exposure time: 60s.



Immunoprecipitation analysis of 1.5mg extracts of HeLa cells using 30ug pan-Tri-Methyl lysine antibody (A20145). Western blot was performed from the immunoprecipitate using TriMethyl-Histone H3-K27 antibody (A2363) at a dilution of 1:1000.



Chromatin immunoprecipitation analysis of extracts of HeLa cells, using pan-Tri-Methyl lysine antibody (A20145) and rabbit IgG. The amount of immunoprecipitated DNA was checked by quantitative PCR. Histogram was constructed by the ratios of the immunoprecipitated DNA to the input.