

A20150

Leader in Biomolecular Solutions for Life Science



## DCP1B Rabbit pAb

Catalog No.: A20150

### Basic Information

#### Observed MW

75kDa

#### Calculated MW

68kDa

#### Category

Polyclonal Antibody

#### Applications

WB, ELISA

#### Cross-Reactivity

Human, Rat

### Background

This gene encodes a member of a family of proteins that function in removing the 5' cap from mRNAs, which is a step in regulated mRNA decay. This protein localizes to cytoplasmic foci which are the site of mRNA breakdown and turnover. Alternative splicing results in multiple transcript variants.

### Recommended Dilutions

**WB** 1:500 - 1:1000

**ELISA** Recommended starting concentration is 1 µg/mL. Please optimize the concentration based on your specific assay requirements.

### Immunogen Information

#### Gene ID

196513

#### Swiss Prot

Q8IZD4

#### Immunogen

Recombinant protein (or fragment). This information is considered to be commercially sensitive.

#### Synonyms

DCP1; DCP1B

### Contact



[www.abclonal.com](http://www.abclonal.com)

### Product Information

#### Source

Rabbit

#### Isotype

IgG

#### Purification

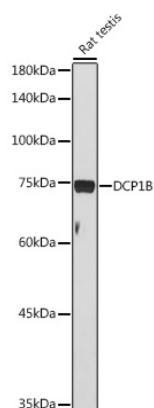
Affinity purification

#### Storage

Store at -20°C. Avoid freeze / thaw cycles.

Buffer: PBS containing 50% glycerol, preserved with proclin300 or sodium azide (as specified on the Certificate of Analysis), pH 7.3.

## Validation Data



Western blot analysis of lysates from Rat testis, using DCP1B Rabbit pAb (A20150) at 1:1000 dilution.

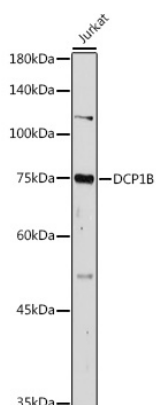
Secondary antibody: HRP-conjugated Goat anti-Rabbit IgG (H+L) (AS014) at 1:10000 dilution.

Lysates/proteins: 25µg per lane.

Blocking buffer: 3% nonfat dry milk in TBST.

Detection: ECL Basic Kit (RM00020).

Exposure time: 90s.



Western blot analysis of lysates from Jurkat cells, using DCP1B Rabbit pAb (A20150) at 1:1000 dilution.

Secondary antibody: HRP-conjugated Goat anti-Rabbit IgG (H+L) (AS014) at 1:10000 dilution.

Lysates/proteins: 25µg per lane.

Blocking buffer: 3% nonfat dry milk in TBST.

Detection: ECL Basic Kit (RM00020).

Exposure time: 180s.