

A20176

Leader in Biomolecular Solutions for Life Science



## Stella Rabbit pAb

Catalog No.: A20176

### Basic Information

#### Observed MW

17kDa

#### Calculated MW

18kDa

#### Category

Polyclonal Antibody

#### Applications

WB,ELISA

#### Cross-Reactivity

Mouse,Rat

### Background

Enables methylated histone binding activity. Involved in negative regulation of DNA demethylation; protection of DNA demethylation of female pronucleus; and regulation of genetic imprinting. Acts upstream of or within embryonic cleavage. Located in cytoplasm; female pronucleus; and male pronucleus. Is expressed in several structures, including central nervous system; early conceptus; gonad; hindgut diverticulum; and primordial germ cell. Orthologous to human DPPA3 (developmental pluripotency associated 3).

### Recommended Dilutions

**WB** 1:500 - 1:1000

**ELISA** Recommended starting concentration is 1 µg/mL. Please optimize the concentration based on your specific assay requirements.

### Immunogen Information

#### Gene ID

73708

#### Swiss Prot

Q8QZY3

#### Immunogen

Recombinant protein (or fragment). This information is considered to be commercially sensitive.

#### Synonyms

PCG7; PGC7; Stella; 2410075G02Rik

### Contact



[www.abclonal.com](http://www.abclonal.com)

### Product Information

#### Source

Rabbit

#### Isotype

IgG

#### Purification

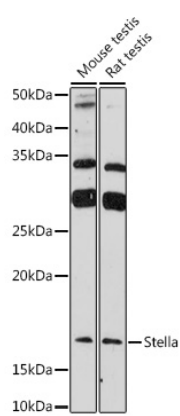
Affinity purification

#### Storage

Store at -20°C. Avoid freeze / thaw cycles.

Buffer: PBS with 0.01% thimerosal, 50% glycerol, pH7.3.

# Validation Data



Western blot analysis of various lysates using Stella Rabbit pAb (A20176) at 1:1000 dilution.  
Secondary antibody: HRP-conjugated Goat anti-Rabbit IgG (H+L) (AS014) at 1:10000 dilution.  
Lysates/proteins: 25µg per lane.  
Blocking buffer: 3% nonfat dry milk in TBST.  
Detection: ECL Enhanced Kit (RM00021).  
Exposure time: 180s.