

A20260

Leader in Biomolecular Solutions for Life Science



SARS-CoV-2 ORF9b Rabbit pAb

Catalog No.: A20260

1 Publications

Basic Information

Observed MW

12-14kDa

Calculated MW

11kDa

Category

Polyclonal Antibody

Applications

WB, ELISA

Cross-Reactivity

SARS-CoV-2

Background

SARS-CoV-2 (severe acute respiratory syndrome coronavirus 2) is the causative agent of the COVID19 pandemic. SARS-CoV-2 and SARS-CoV share many proteins common in other CoVs, including 4 major structural proteins (S, E, M, and N proteins) and 16 nonstructural proteins (nsp1-16), they possess a unique set of proteins, namely orf3a, 3b, 6, 7a, 7b, 8a, 8b, and 9b. The SARS-CoV-2 genome encodes for a small accessory protein termed Orf9b, which targets the mitochondrial outer membrane protein TOM70 in infected cells. This 98-amino acid (aa) protein is encoded by an alternative open reading frame (ORF) within the N gene and is translated via a leaky scanning mechanism during translation. Crystal structures of orf9b alone revealed a homodimeric β -strand-rich structure with a hydrophobic central tunnel for lipid binding, consistent with the role of orf9b in the mature virion assembly.

Recommended Dilutions

WB 1:500 - 1:1000

ELISA Recommended starting concentration is 1 μ g/mL. Please optimize the concentration based on your specific assay requirements.

Immunogen Information

Gene ID

Swiss Prot

P0DTD2

Immunogen

Recombinant protein (or fragment). This information is considered to be commercially sensitive.

Synonyms

Contact

 www.abclonal.com

Product Information

Source

Rabbit

Isotype

IgG

Purification

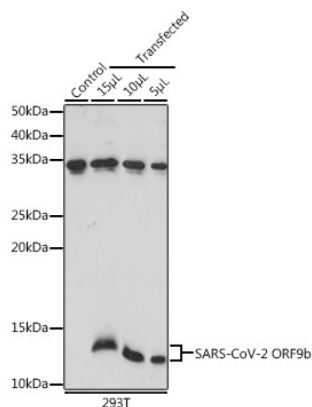
Affinity purification

Storage

Store at -20°C. Avoid freeze / thaw cycles.

Buffer: PBS with 0.09% Sodium azide, 50% glycerol, pH 7.3.

Validation Data



Western blot analysis of extracts of normal 293T cells transfected with ORF9b Protein, using SARS-CoV-2 ORF9b Rabbit pAb (A20260) at 1:1000 dilution.
Secondary antibody: HRP-conjugated Goat anti-Rabbit IgG (H+L) (AS014) at 1:10000 dilution.
Lysates/proteins: 25µg per lane.
Blocking buffer: 3% nonfat dry milk in TBST.
Detection: ECL Basic Kit (RM00020).
Exposure time: 30s.